

Figure 5.7: Generated points to initialise the snake (a), likelihood map (b), hybrid probabilistic map (c) and topographic map (d) of a part of the hybrid potential shown by the black square in (c).

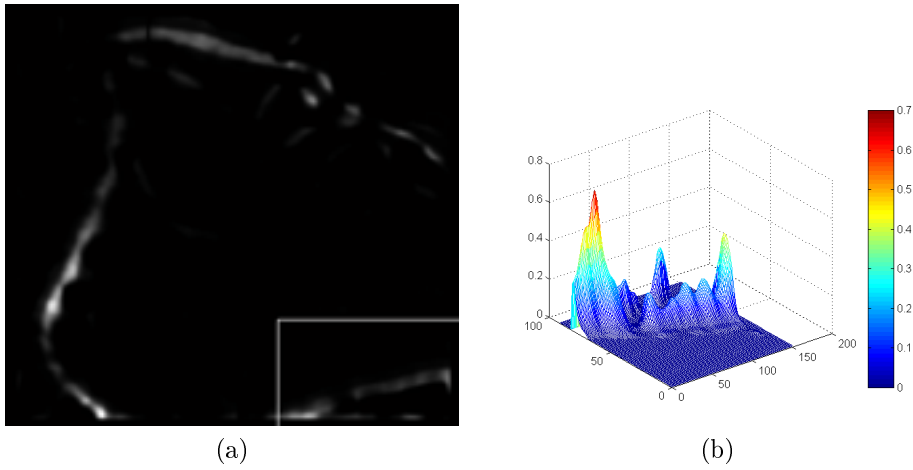


Figure 5.8: Processed image (a). Topographic map (b).

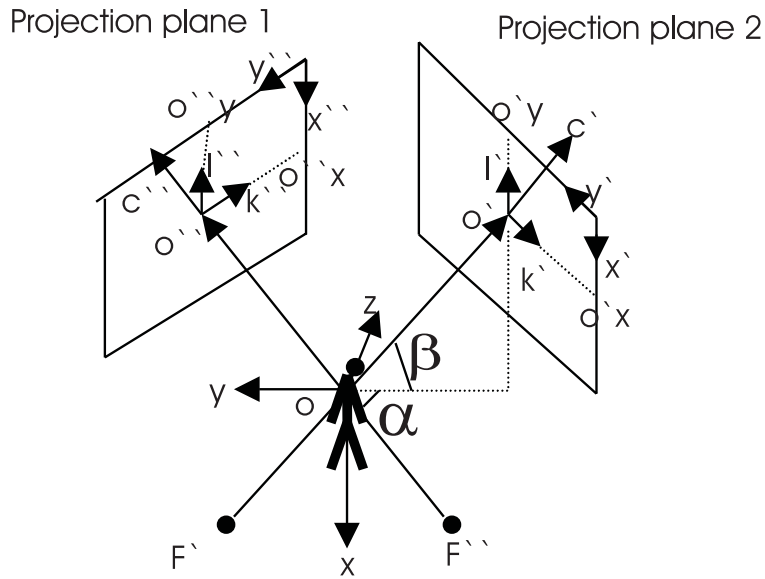


Figure 5.9: Global reference system (x, y, z) with the projection planes and their local co-ordinate systems (k', l', c') and (k'', l'', c'') . F' and F'' represent the x-ray source positions.

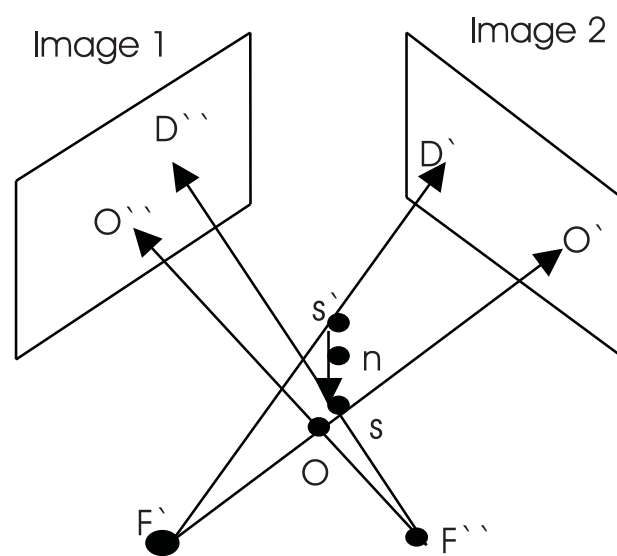


Figure 5.10: The minimum distance reconstruction of corresponding points D' and D'' .

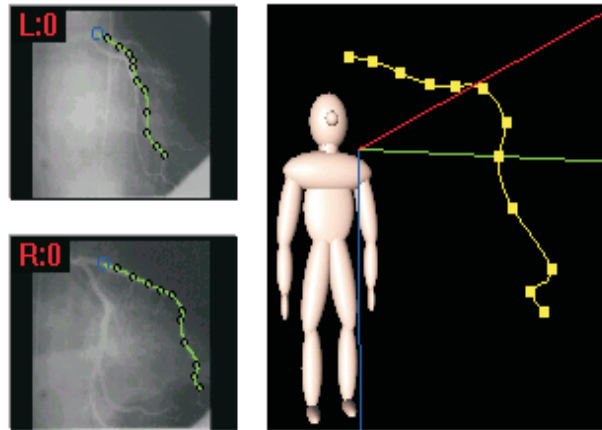


Figure 5.11: Example of reconstruction of a left anterior descendent artery.

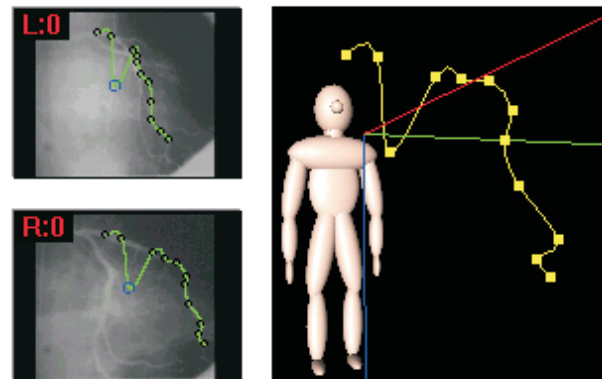


Figure 5.12: Model image points modification affect the 3D reconstruction.

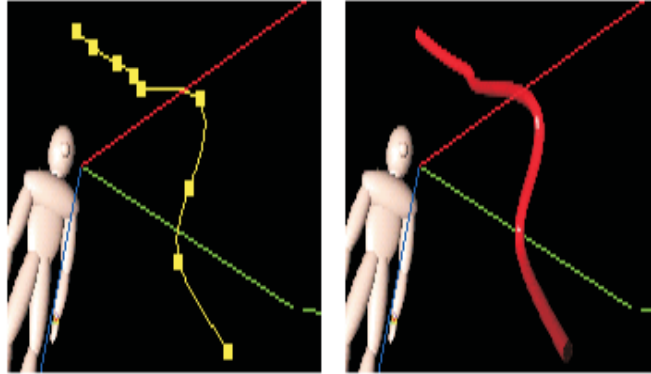


Figure 5.13: Representation using bsplines and nurbs.

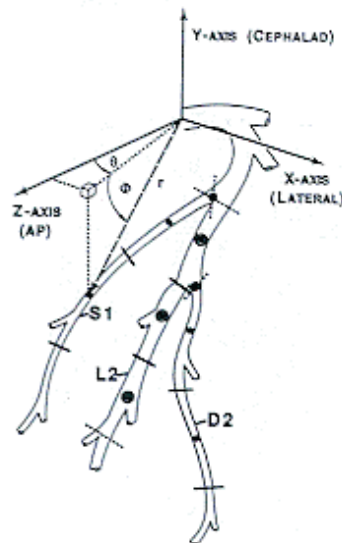


Figure 5.14: Model points.

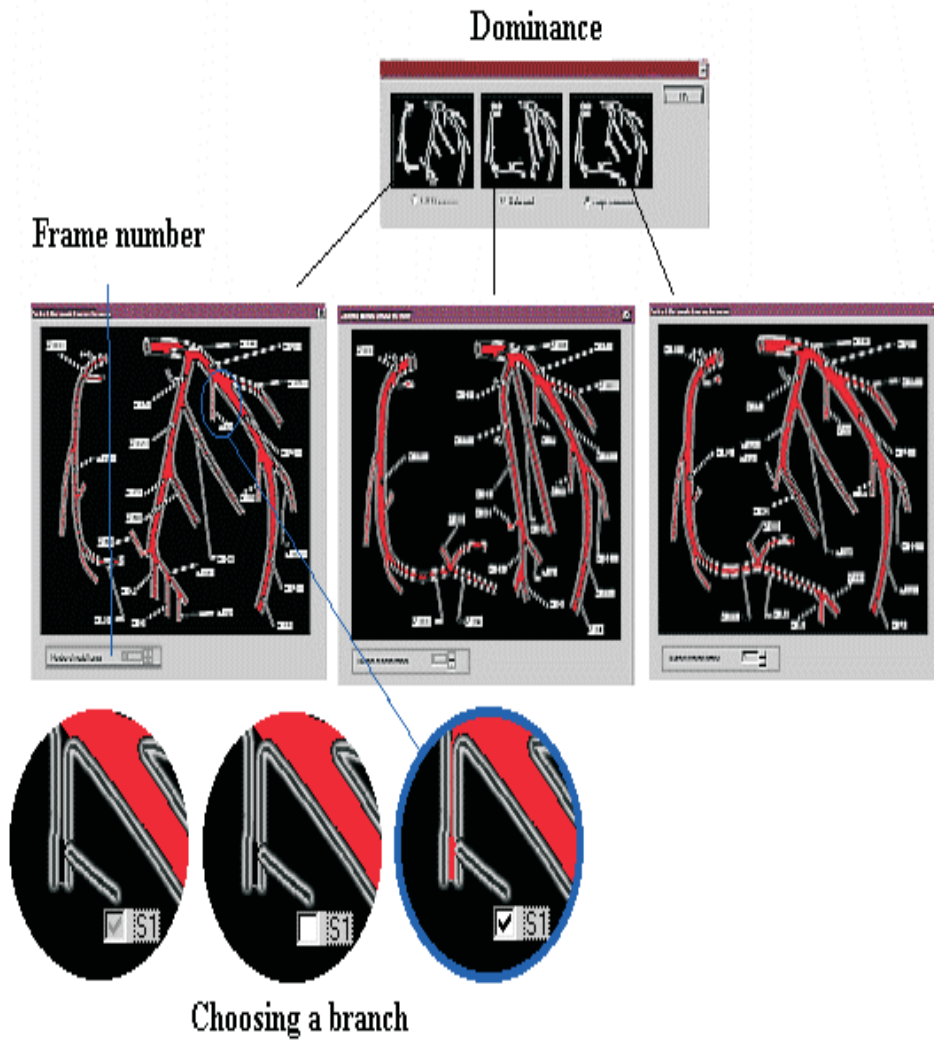


Figure 5.15: Graph Editor.

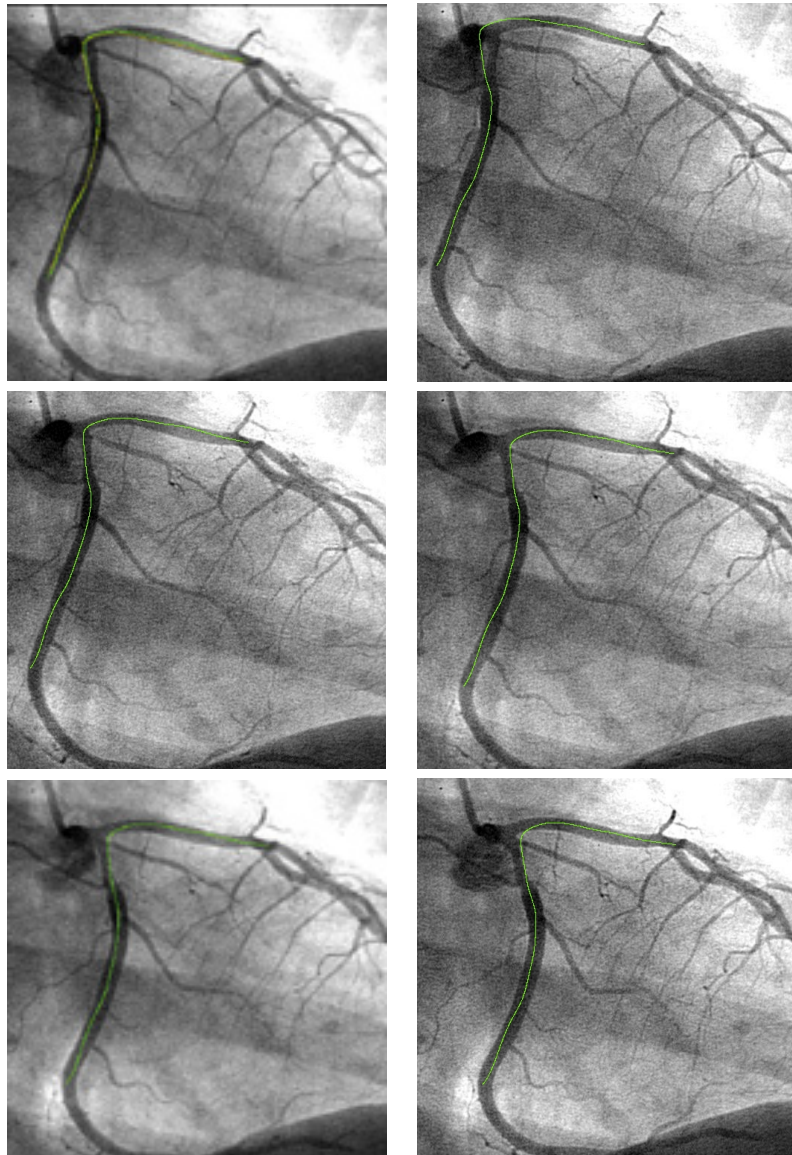


Figure 5.16: Tracking by statistic snakes.

