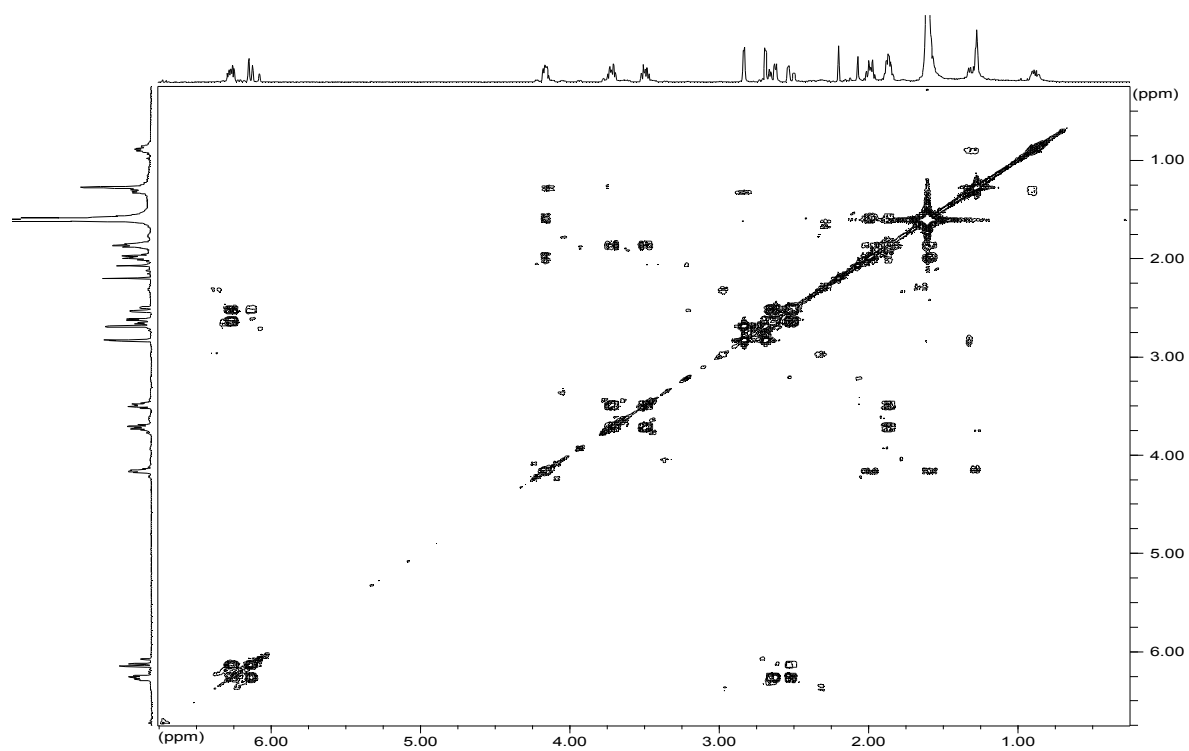
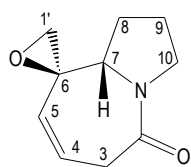


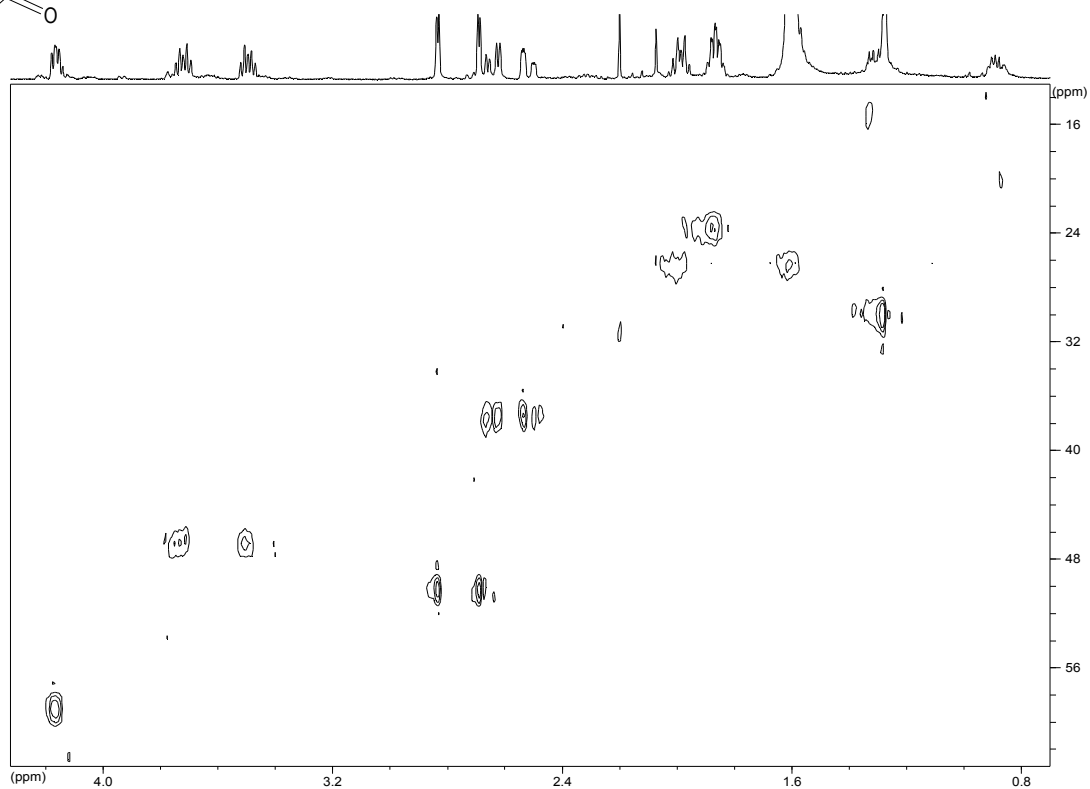
¹H-RMN (500 MHz, CDCl₃) de **144**



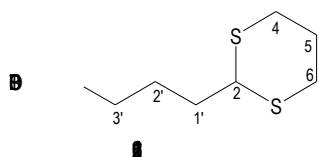
COSY (500 MHz, CDCl₃) de **144**



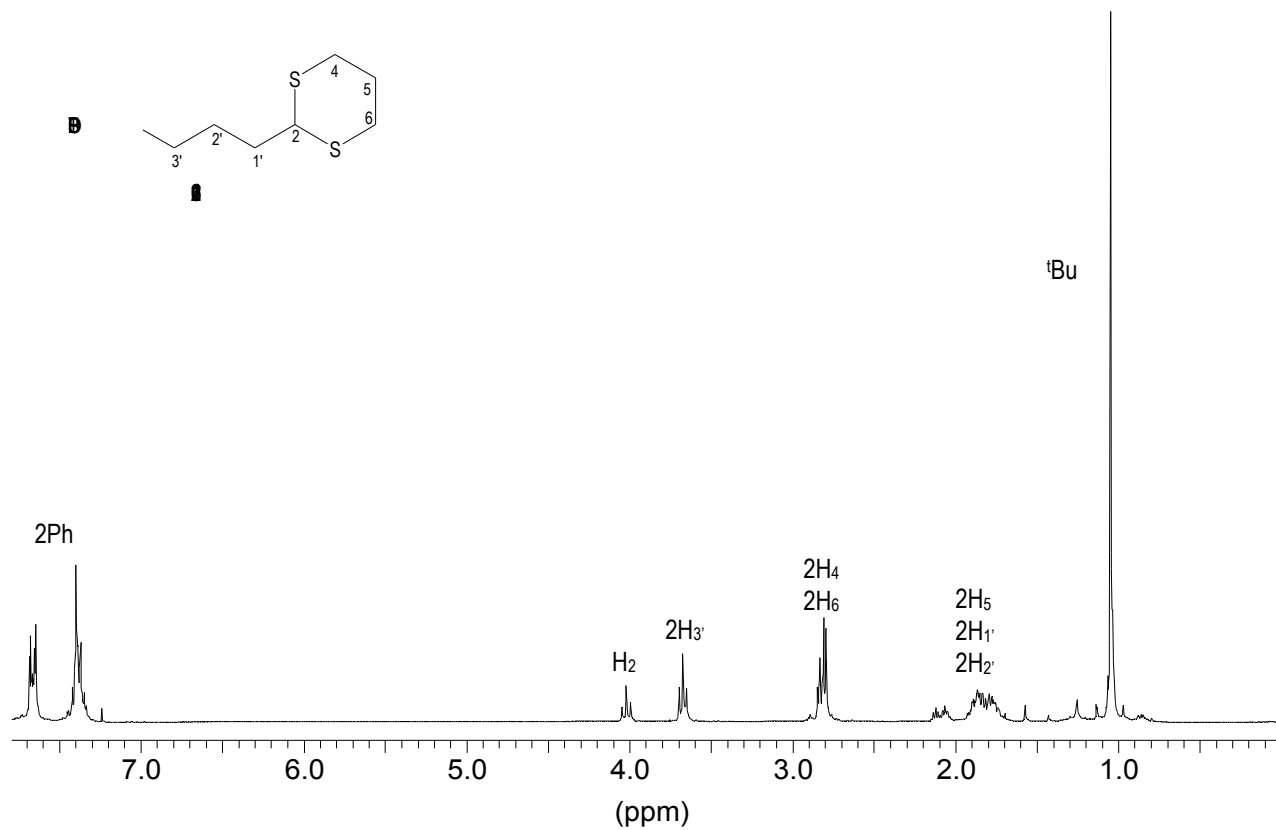
144



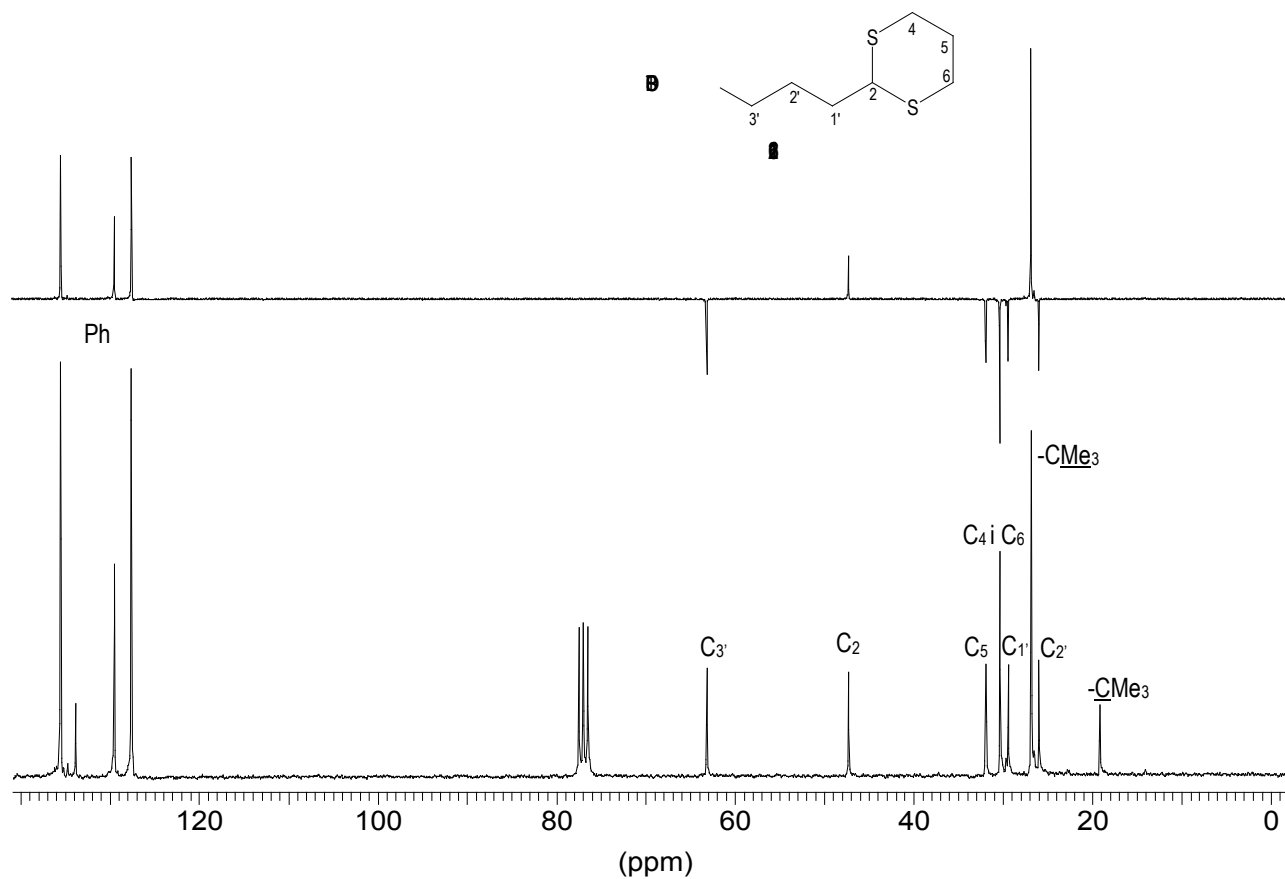
Correlació $^1\text{H}/^{13}\text{C}$ (500 MHz, CDCl_3) de 144



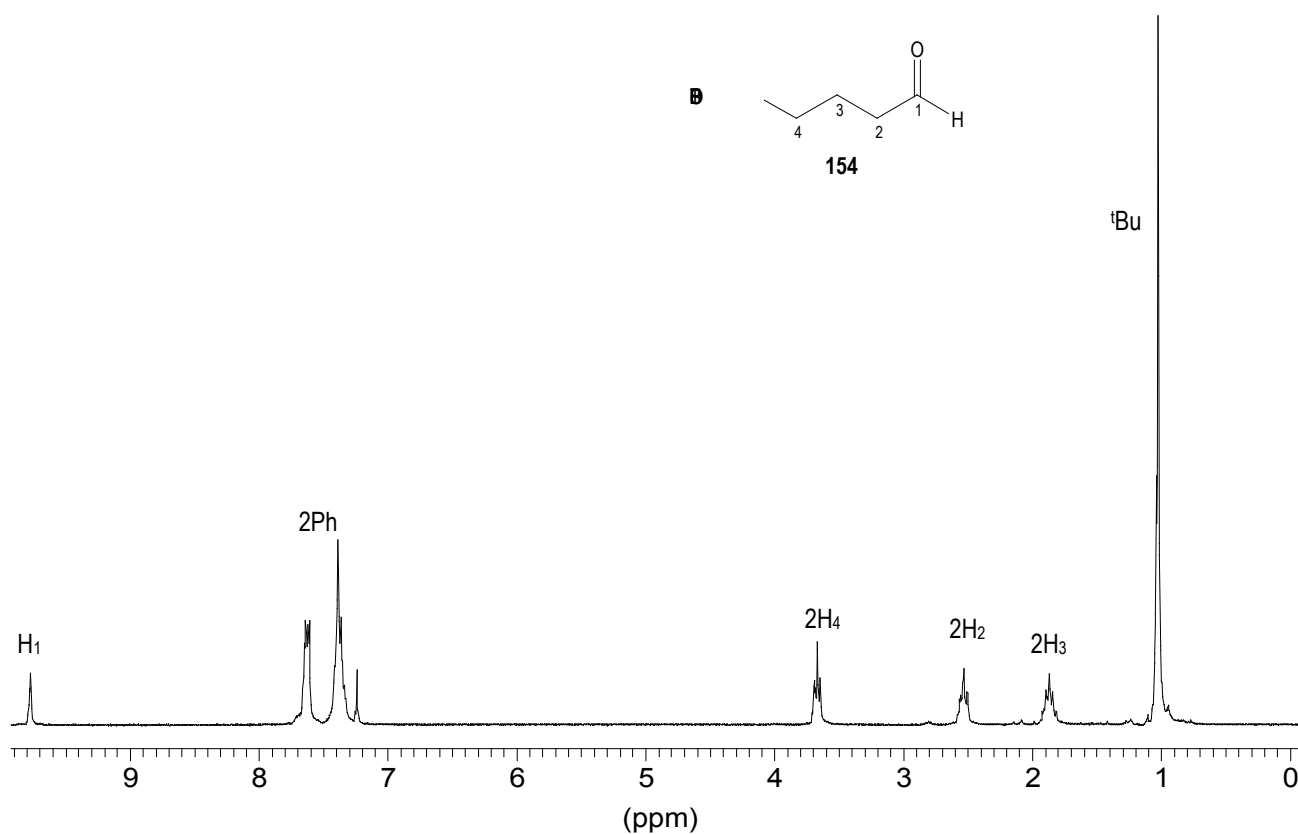
162



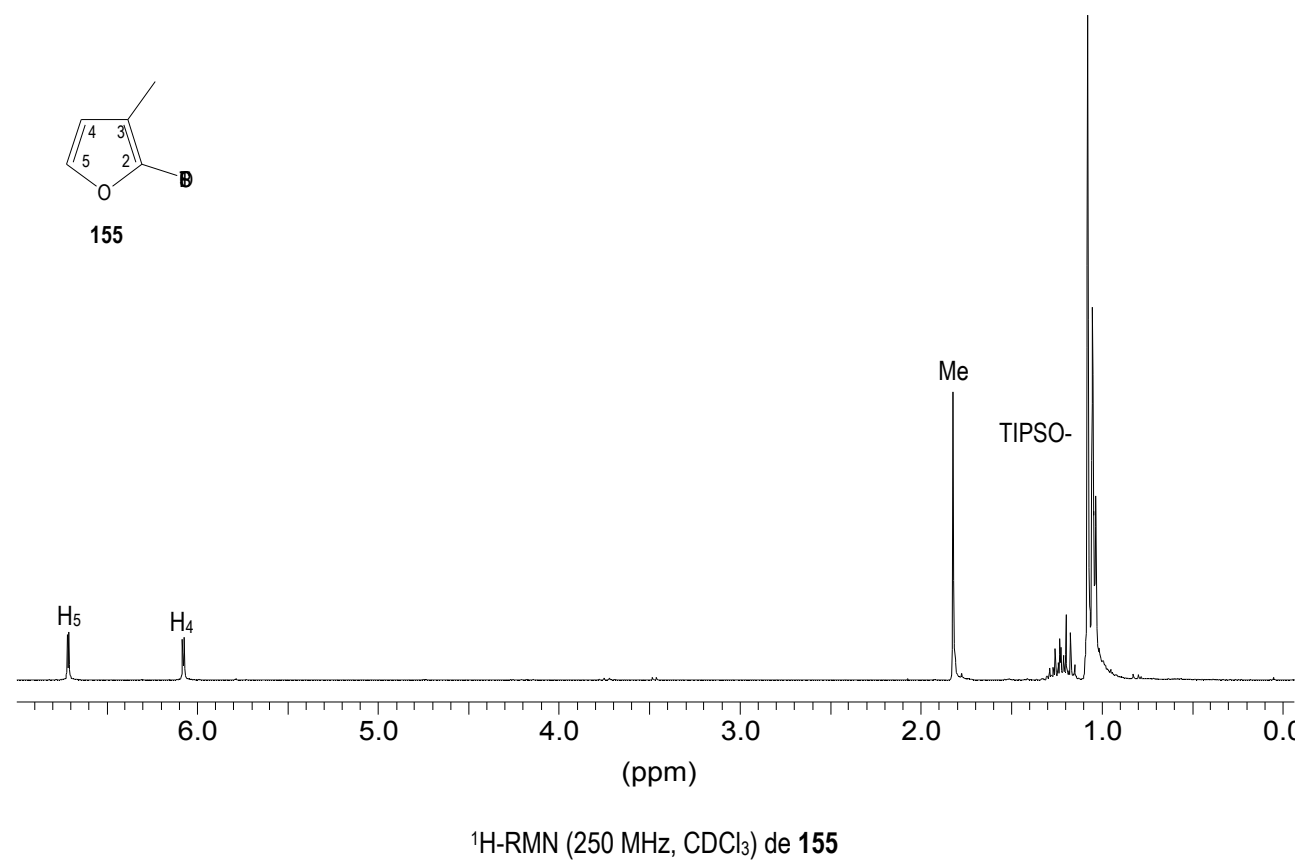
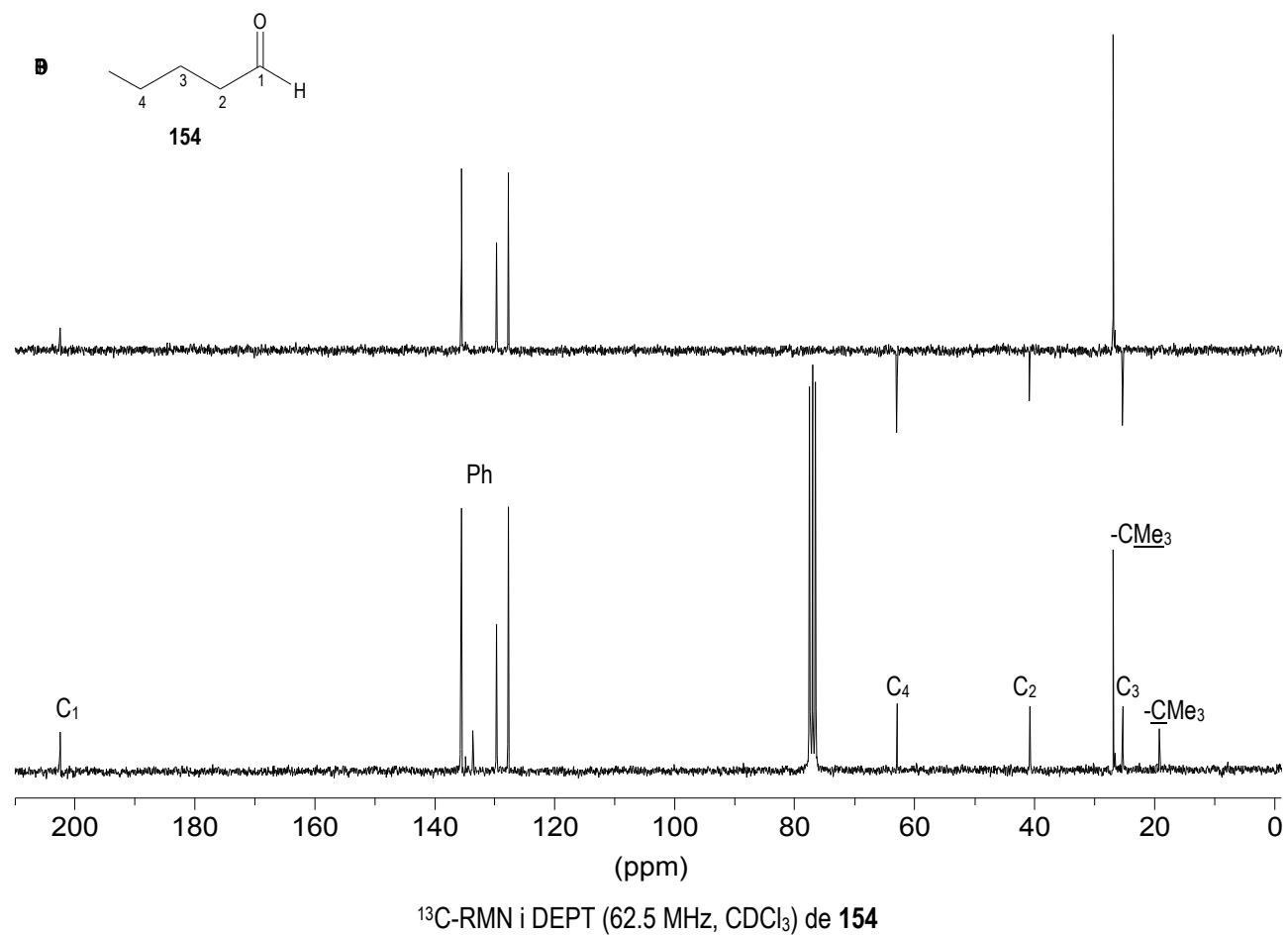
^1H -RMN (250 MHz, CDCl_3) de 162

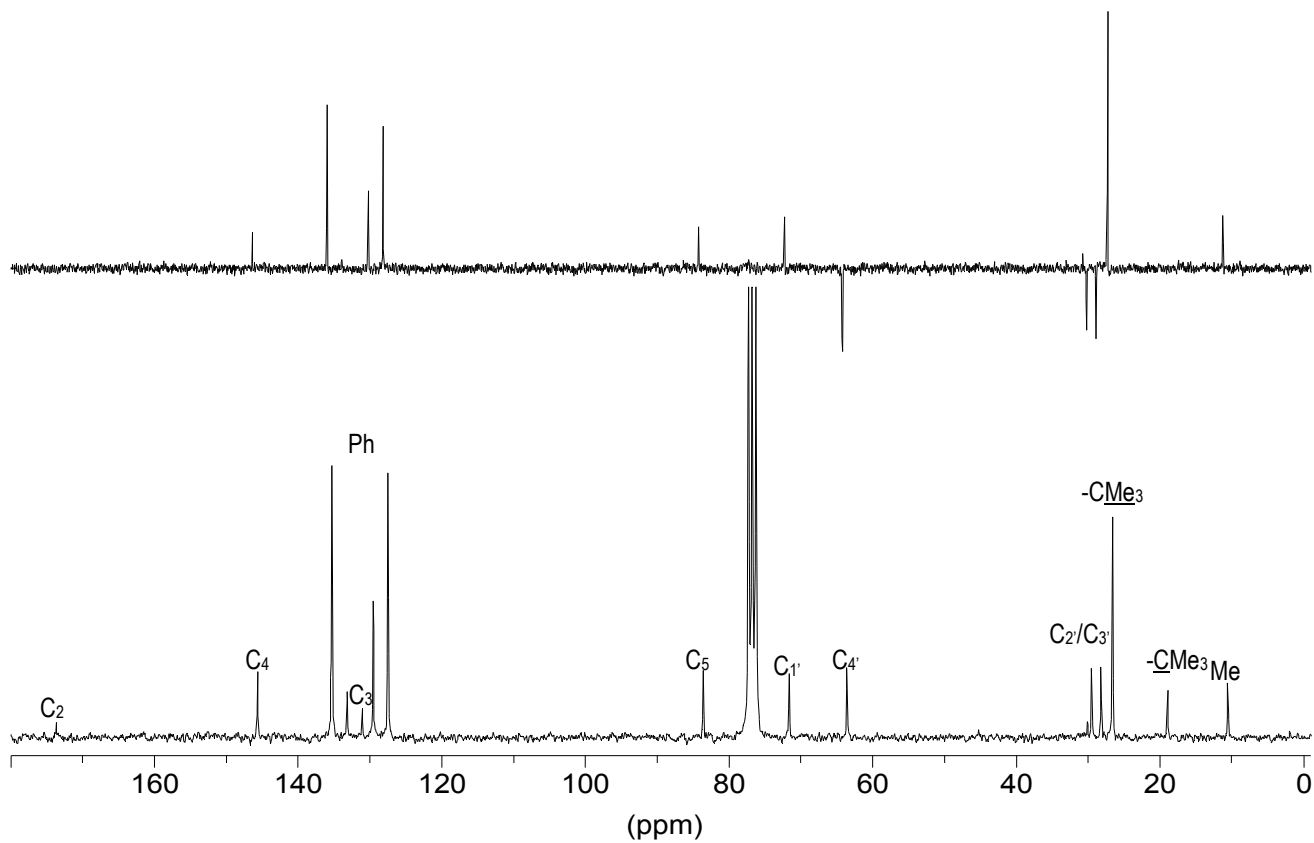
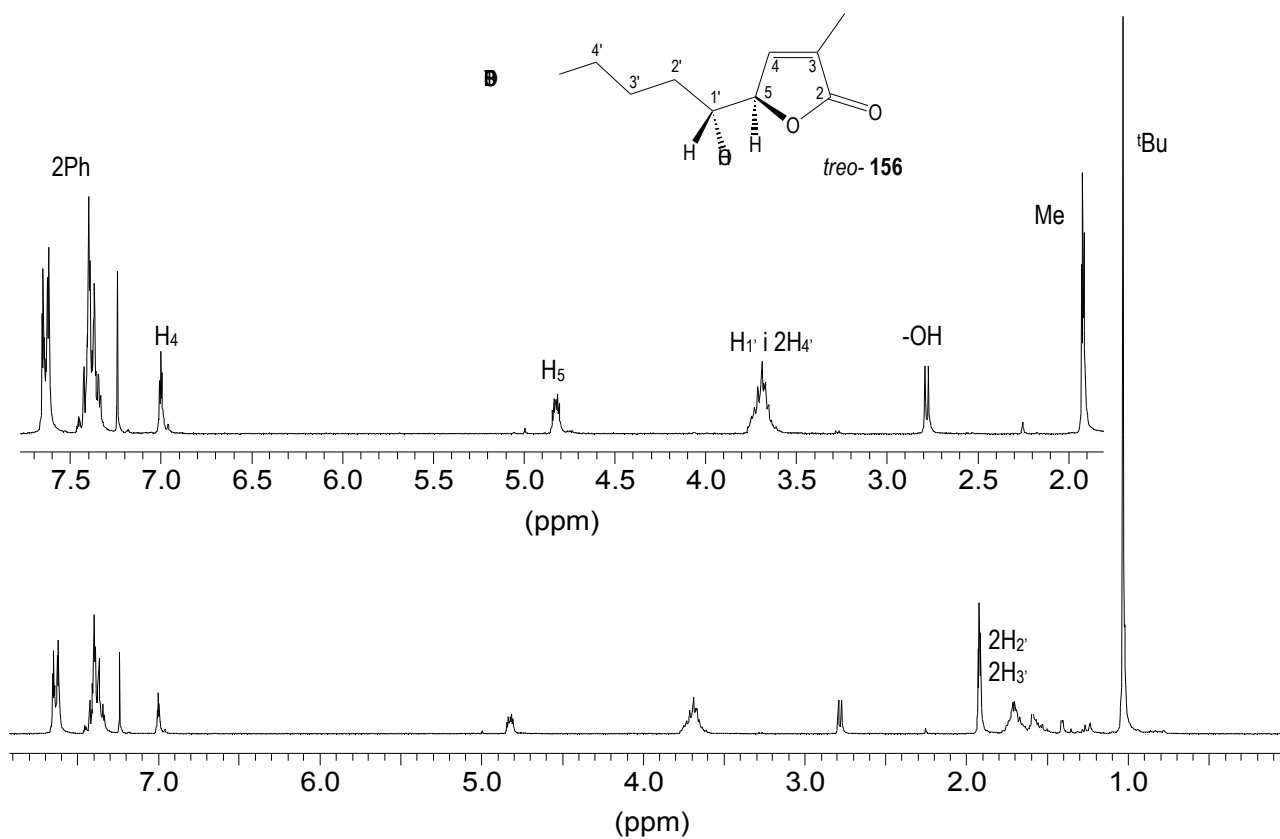


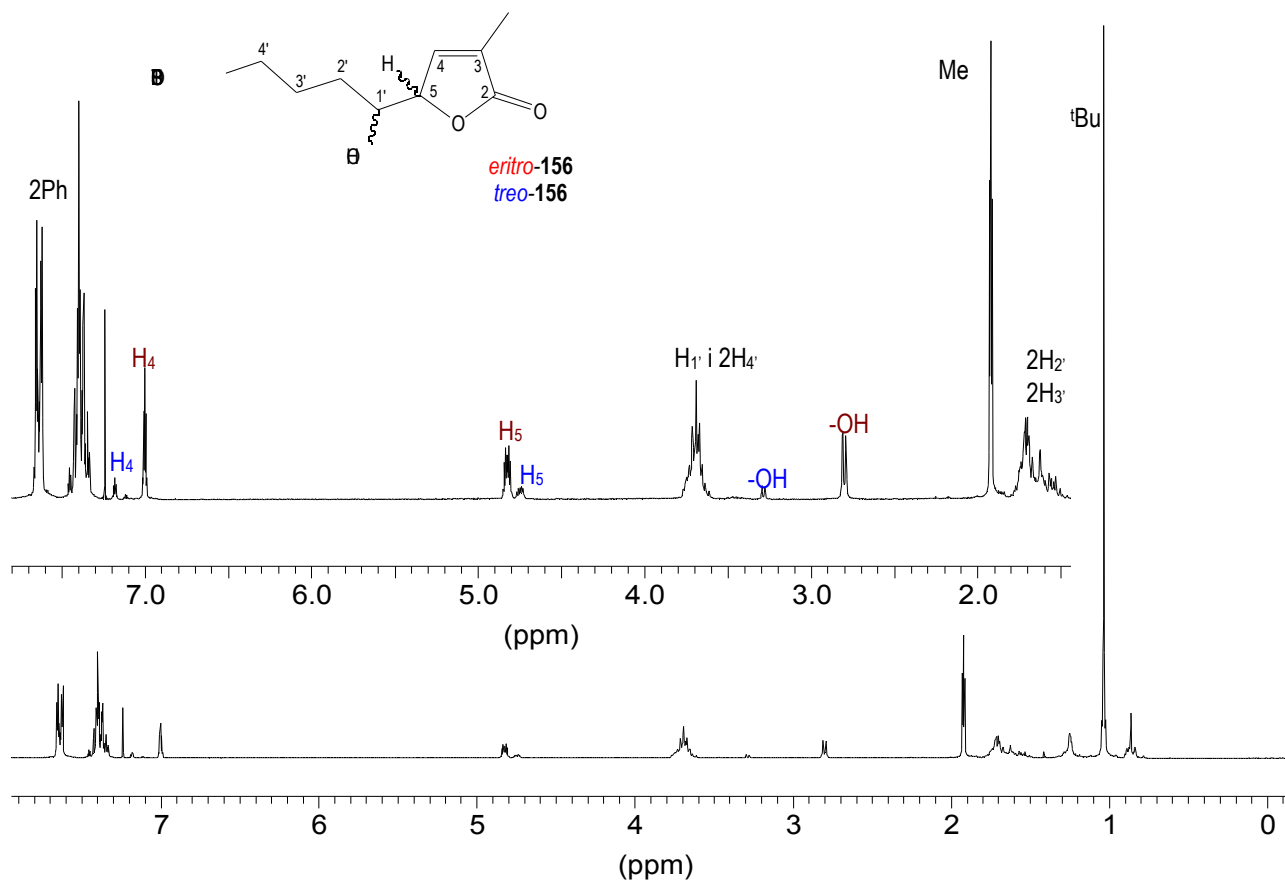
¹³C-RMN i DEPT (62.5 MHz, CDCl₃) de **162**



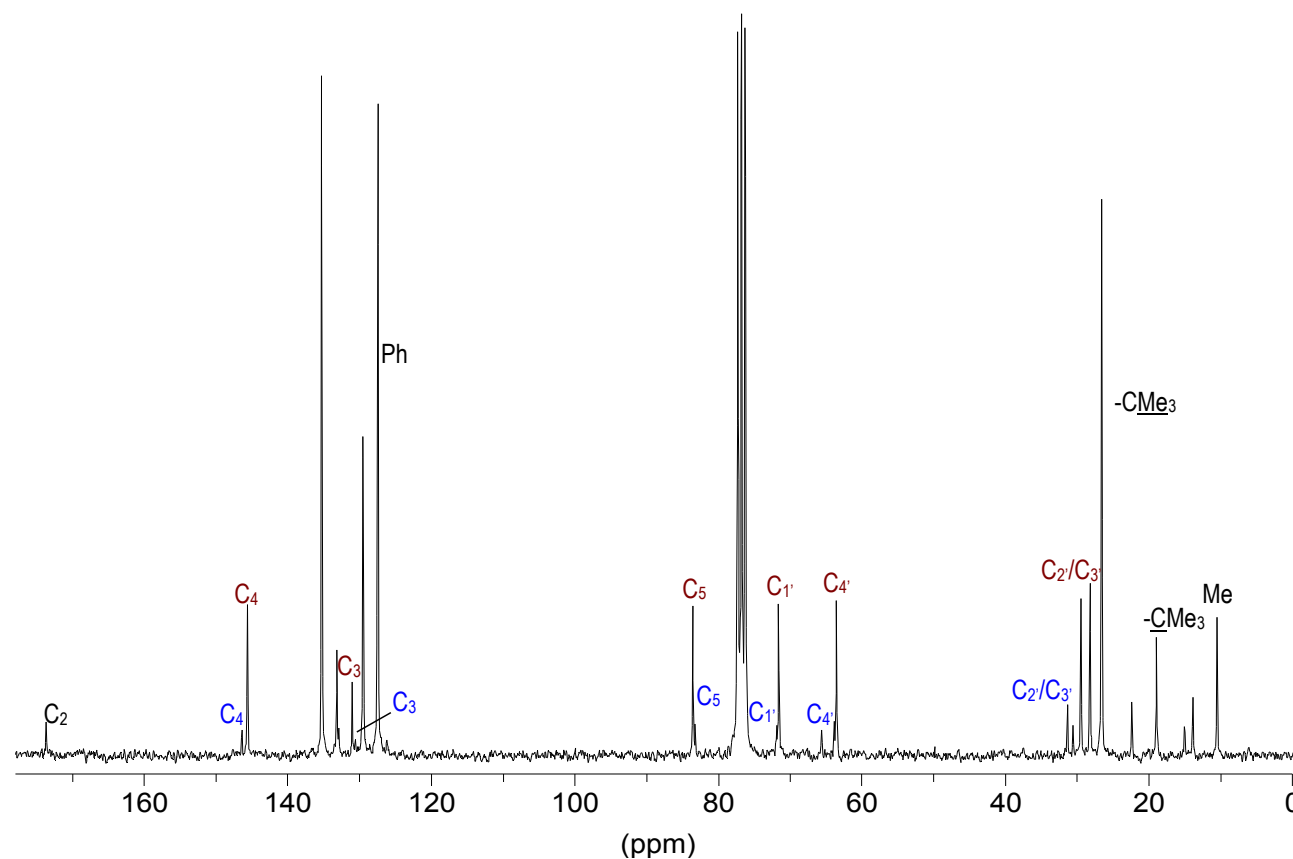
¹H-RMN (250 MHz, CDCl₃) de **154**



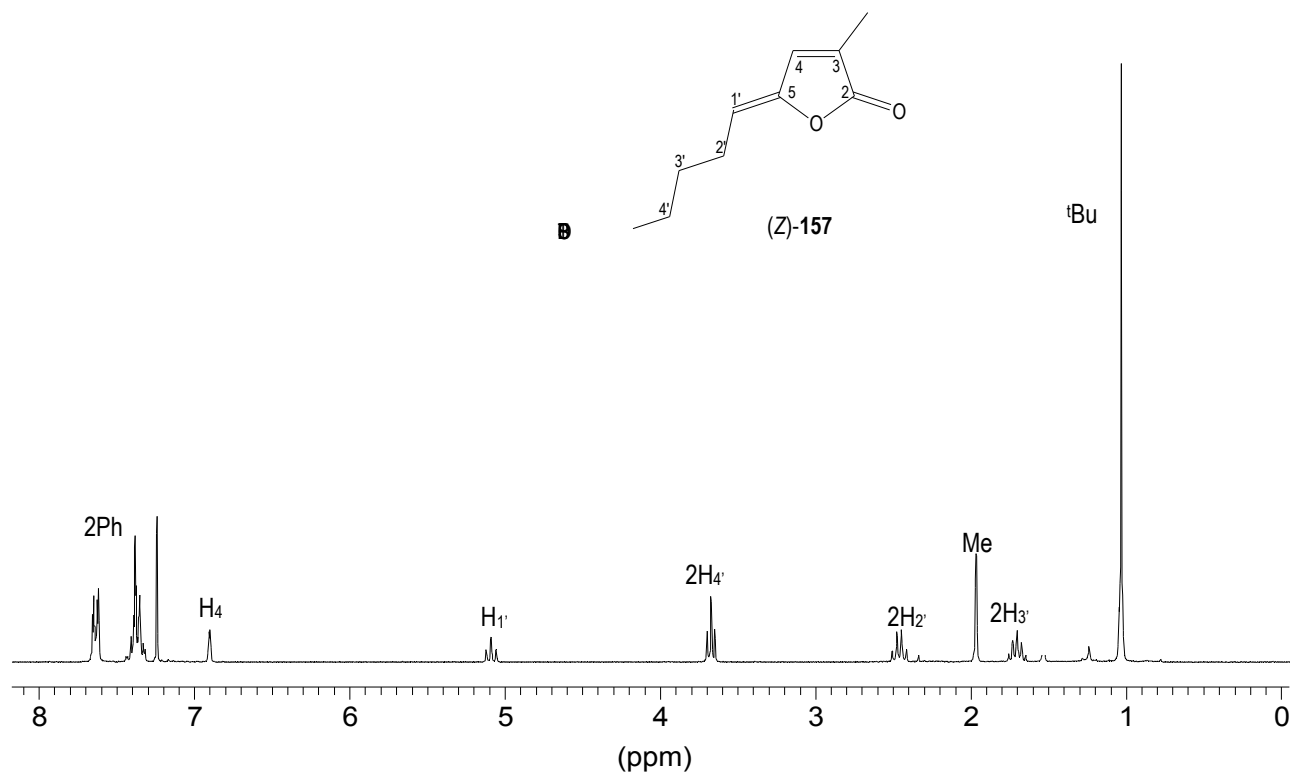




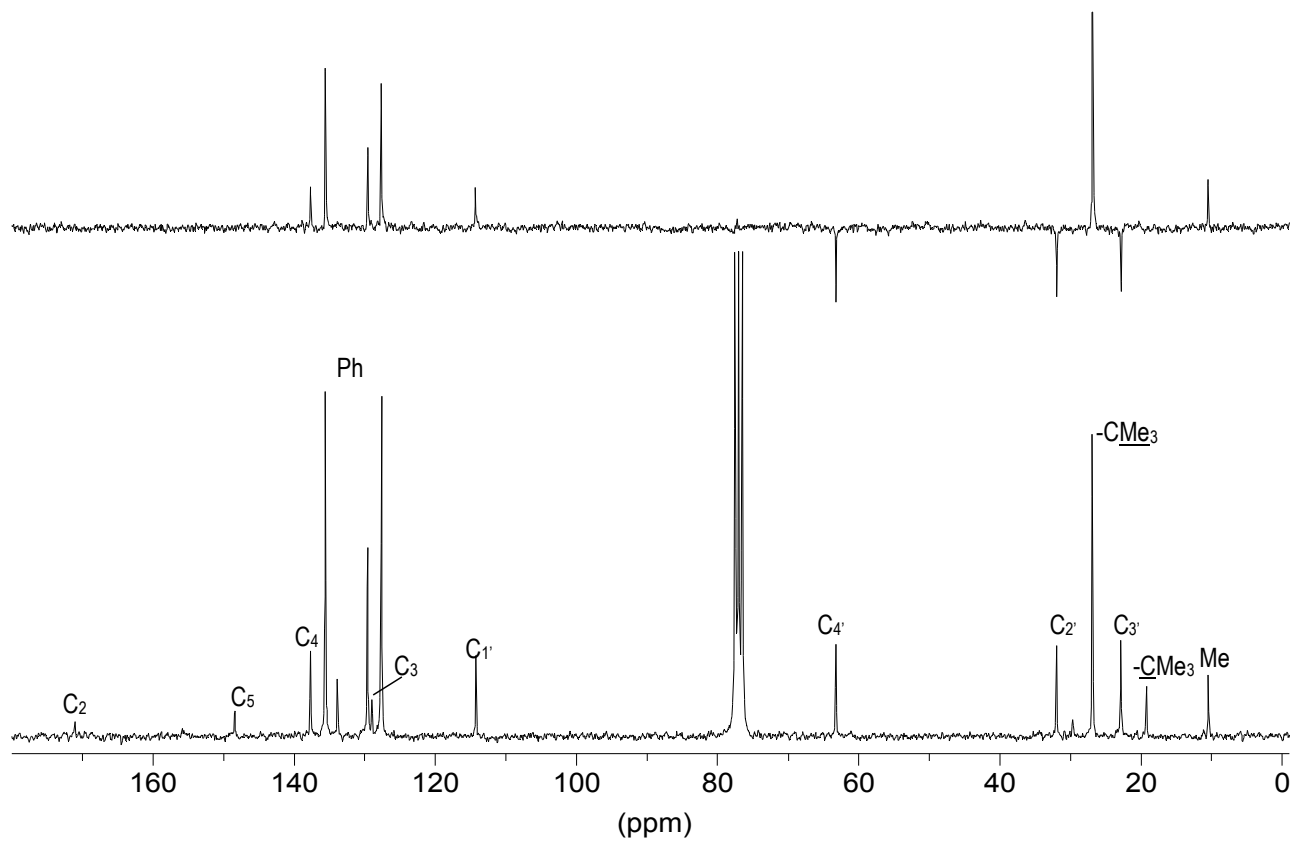
¹H-RMN (250 MHz, CDCl₃) de *treo-156* + *eritro-156*



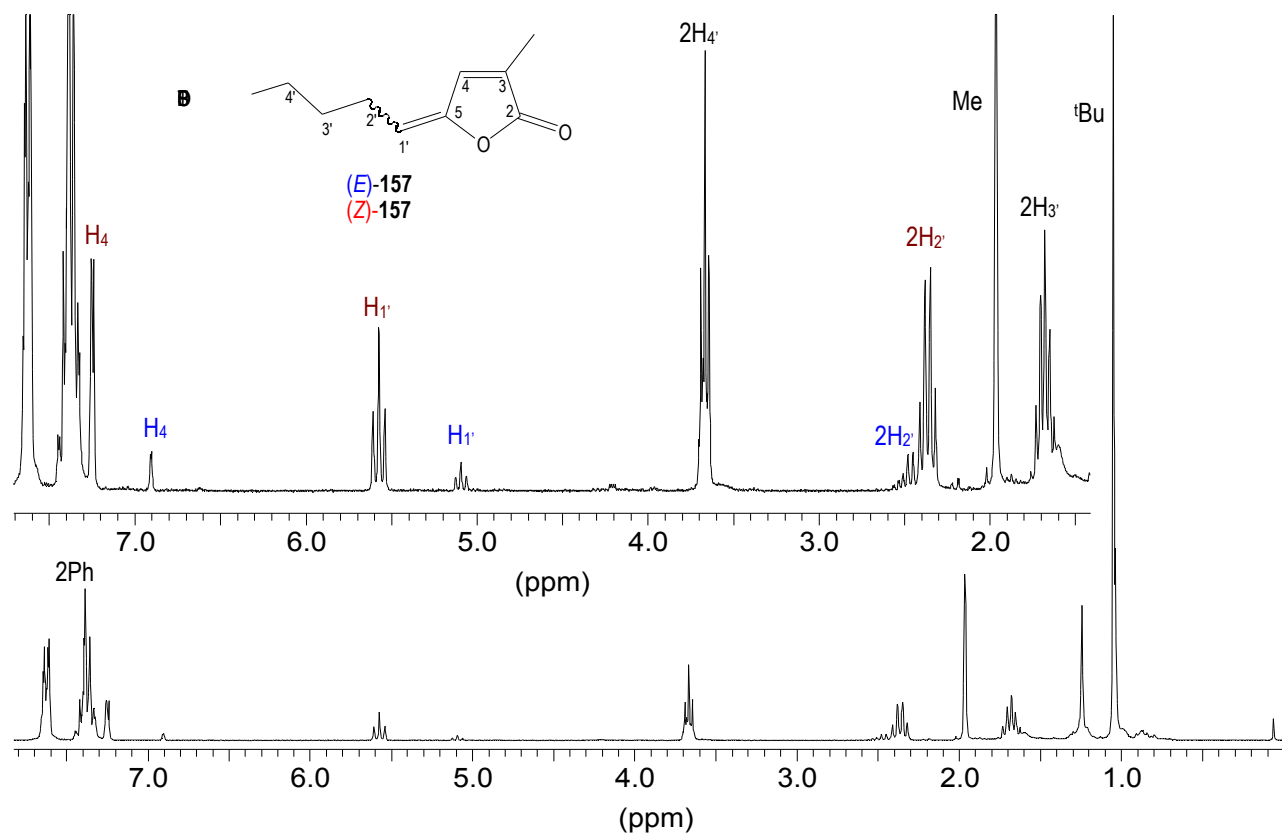
¹³C-RMN (62.5 MHz, CDCl₃) de *treo-156* + *eritro-156*



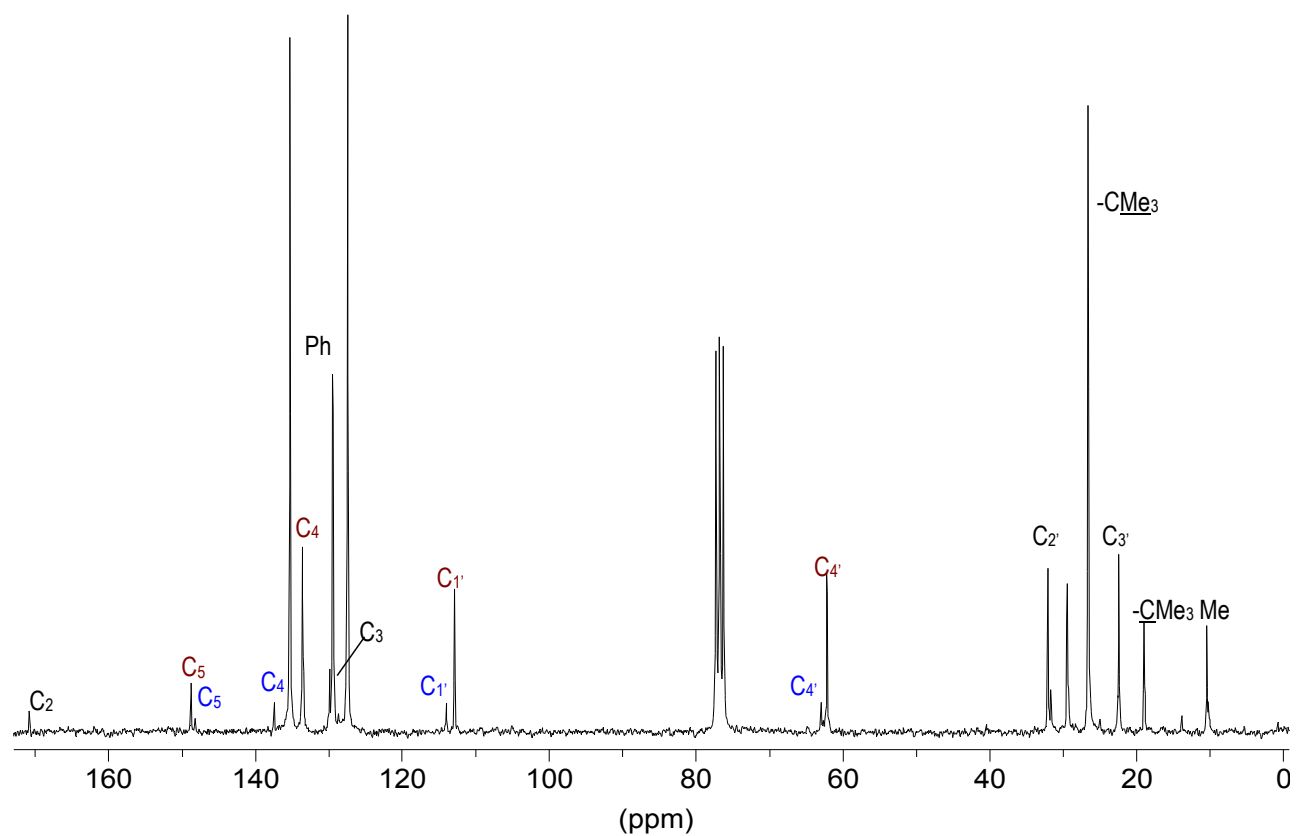
¹H-RMN (250 MHz, CDCl₃) de (Z)-157



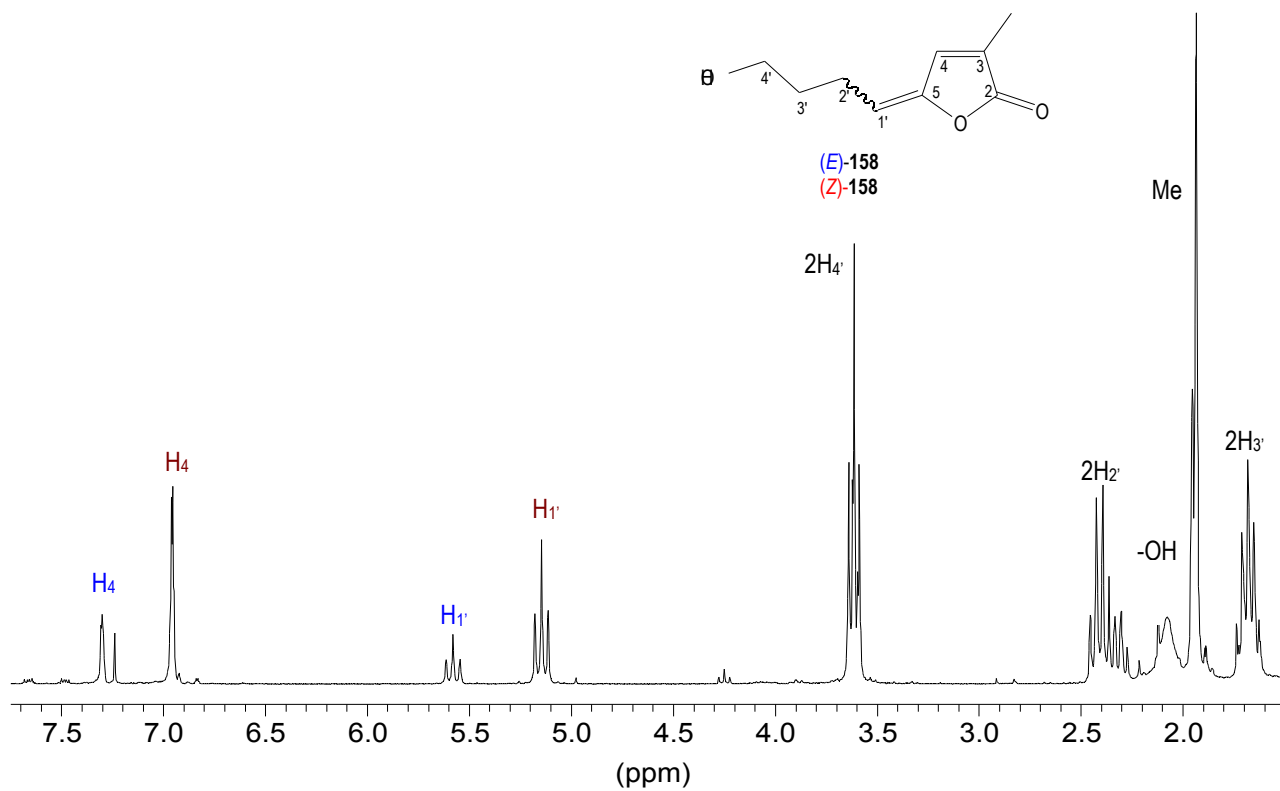
¹³C-RMN i DEPT (62.5 MHz, CDCl₃) de (Z)-157



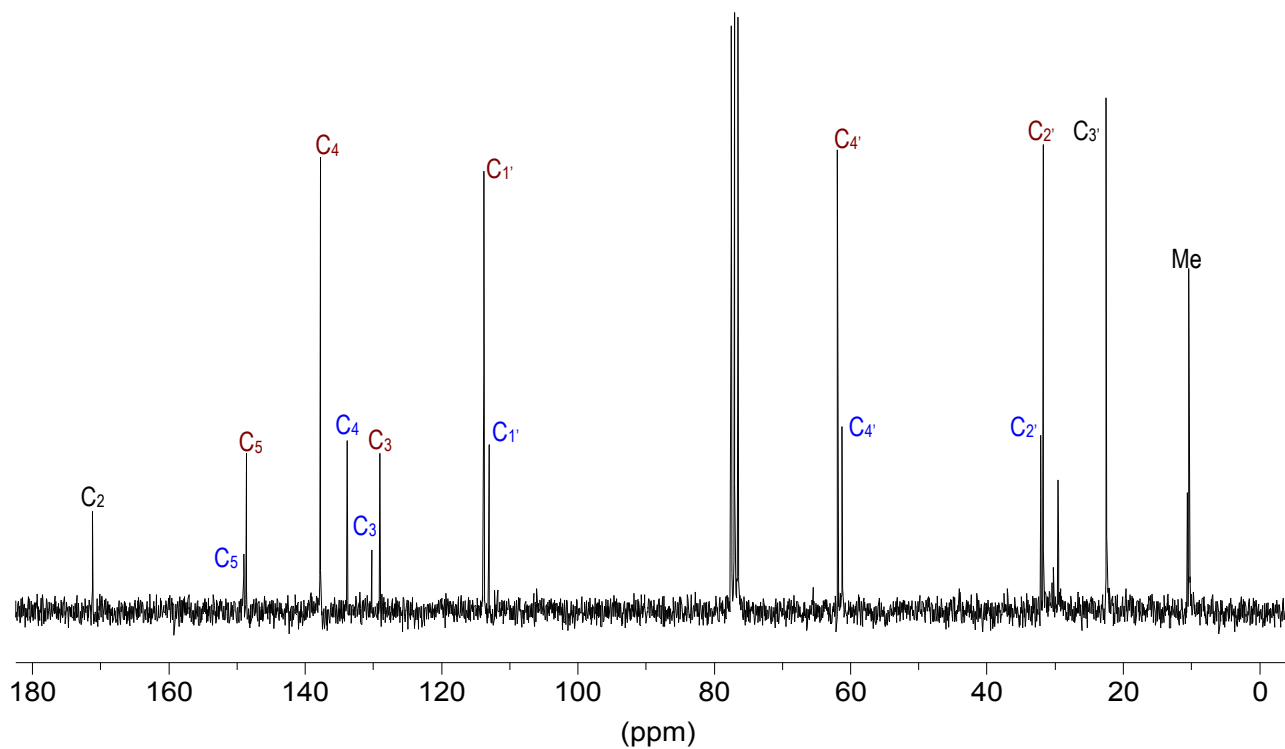
¹H-RMN (250 MHz, CDCl₃) de (Z)-157 + (E)-157



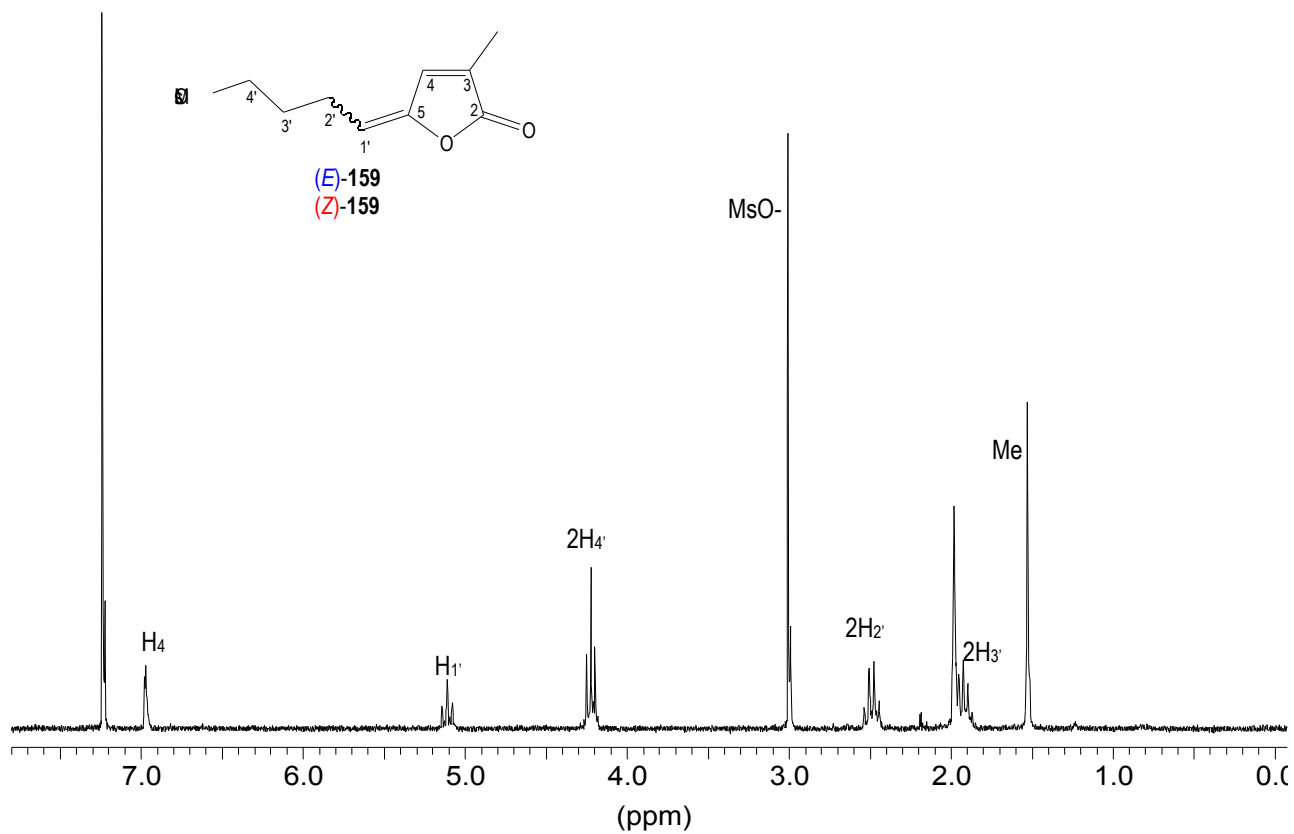
¹³C-RMN (62.5 MHz, CDCl₃) de (Z)-157 + (E)-157



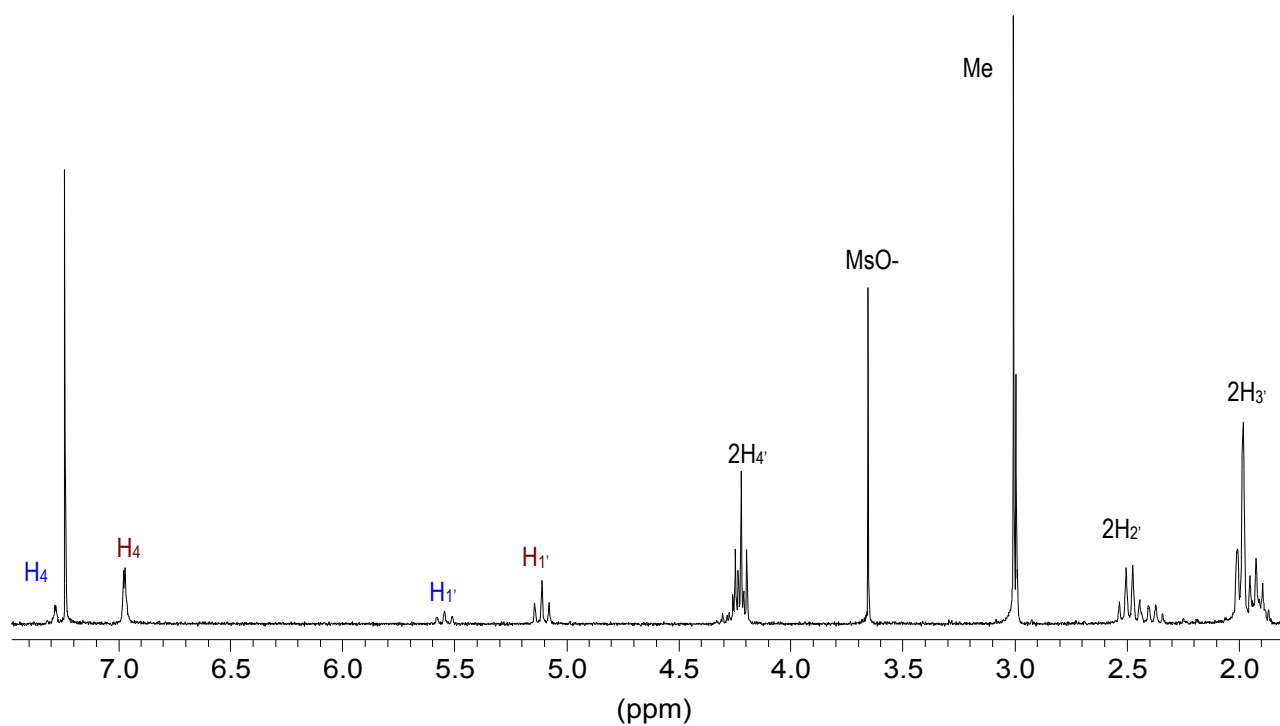
¹H-RMN (250 MHz, CDCl₃) de (Z)-158 + (E)-158



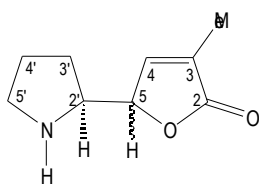
¹³C-RMN (62.5 MHz, CDCl₃) (Z)-158 + (E)-158



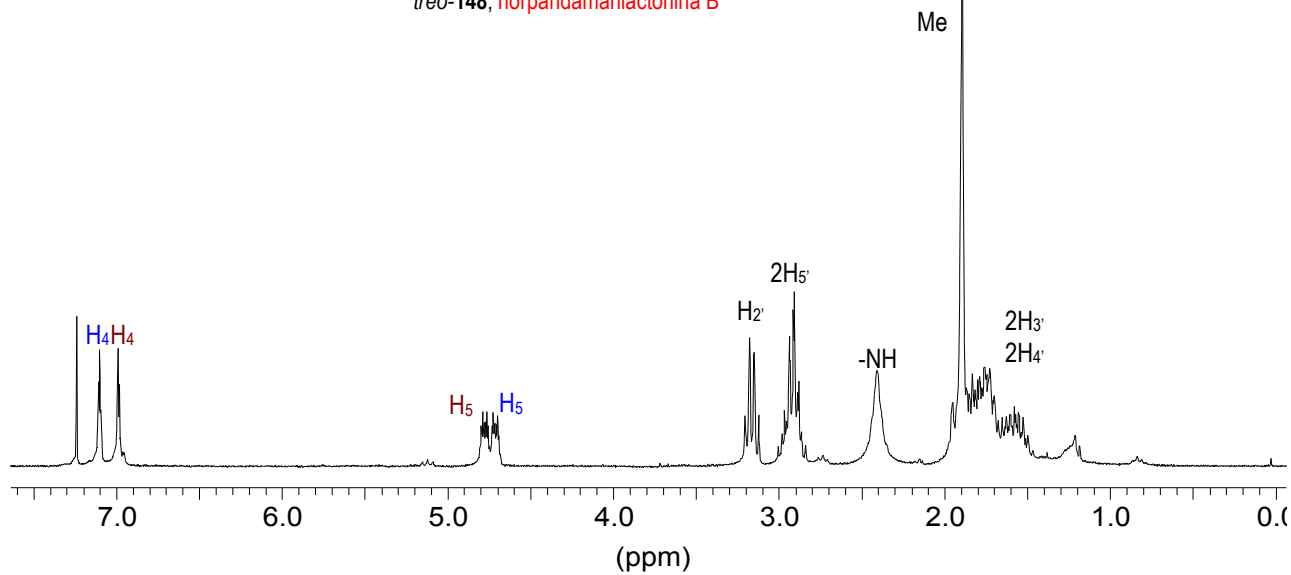
¹H-RMN (250 MHz, CDCl₃) de (Z)-159



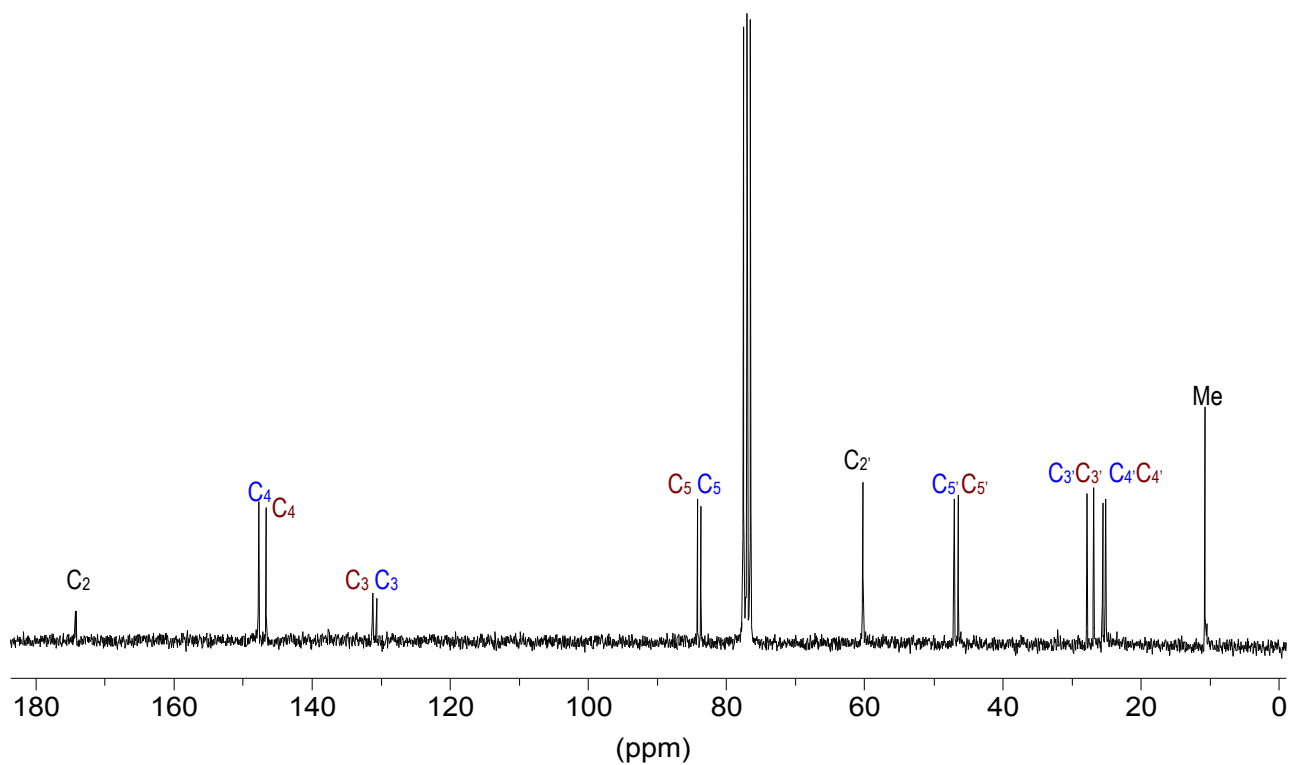
¹H-RMN (250 MHz, CDCl₃) de (Z)-159 + (E)-159



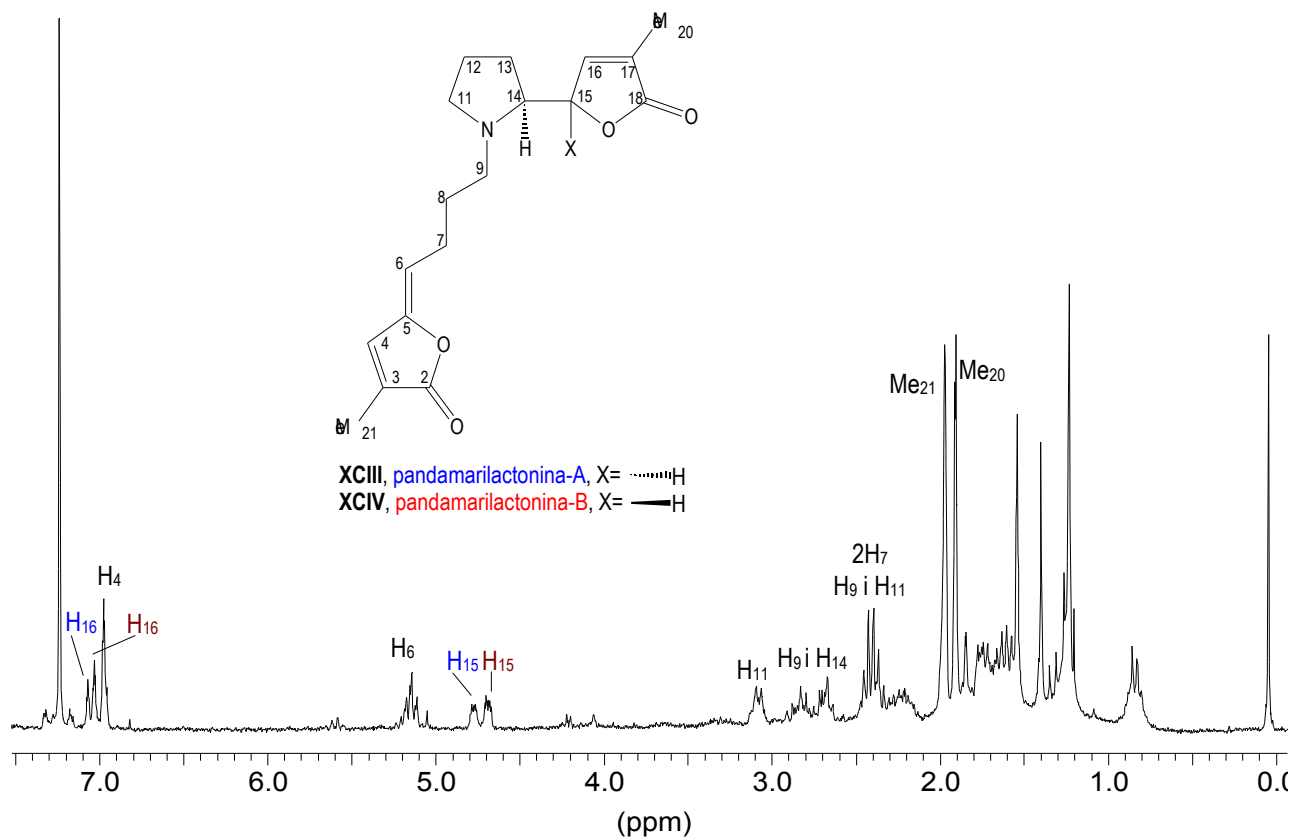
eritro-148, norpandamarilactonina A
treo-148, norpandamarilactonina B



^1H -RMN (250 MHz, CDCl_3) de *treo-148* + *eritro-148*



^{13}C -RMN (62.5 MHz, CDCl_3) de *treo-148* + *eritro-148*



¹H-RMN (250 MHz, CDCl₃) de **XCIII** + **XCIV**

XI. ÍNDEX DE FÓRMULES

