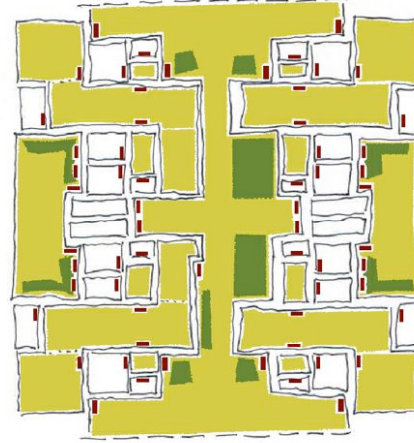
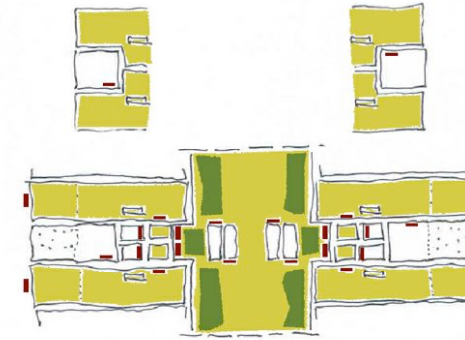


Access Configuration, Territorial Transition and Overlap Scenarios Housing Typology 1



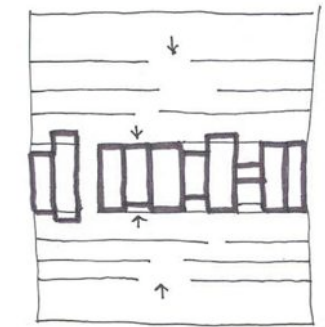
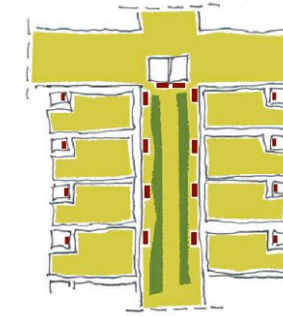
Access Configuration, Territorial Transition and Overlap Scenarios Housing Typology 2



Access Configuration, Territorial Transition and Overlap Scenarios Housing Typology 3

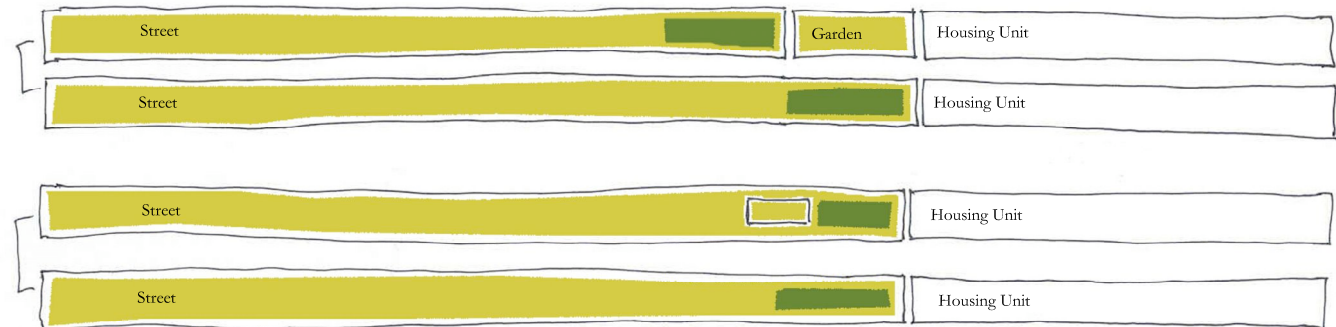


Access Configuration, Territorial Transition and Overlap Scenarios Housing Typology 4



Territorial Depth Diagram

Depth Diagrams in Territorial Configurations Housing Typology 1 (dual orientation)

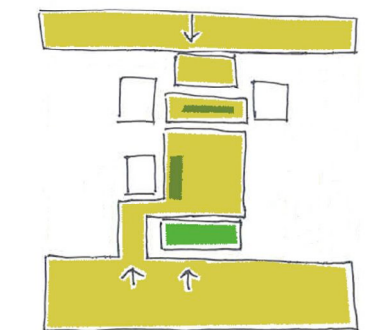
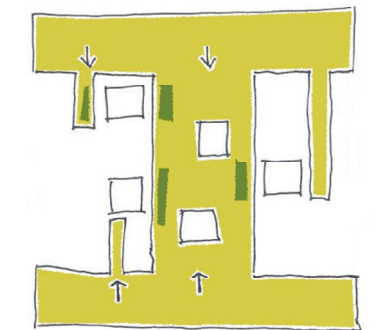


Depth Diagrams in Territorial Configurations Housing Typology 3 (dual orientation)

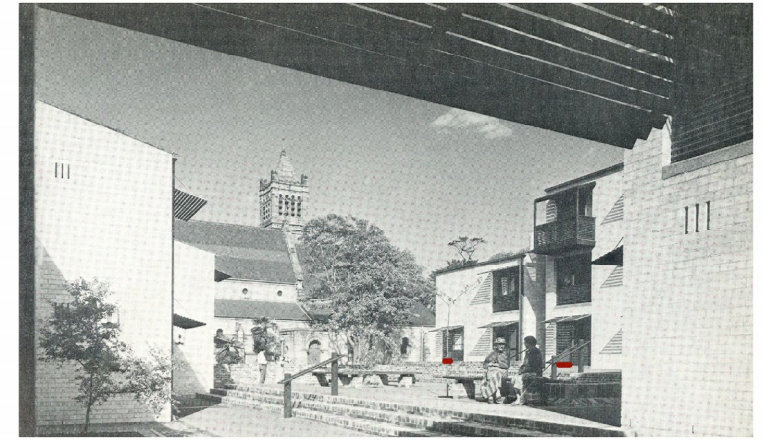
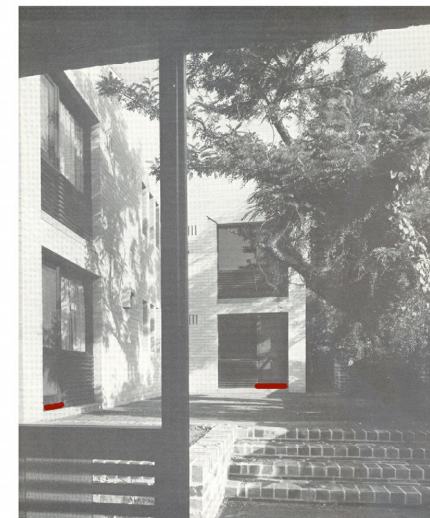
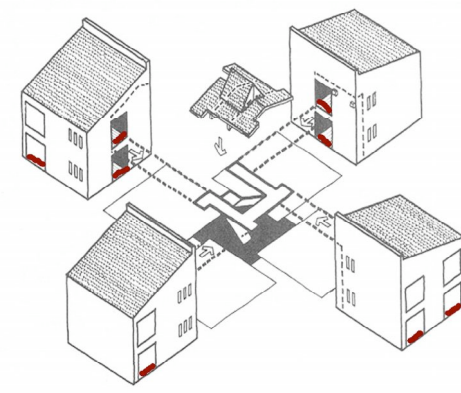
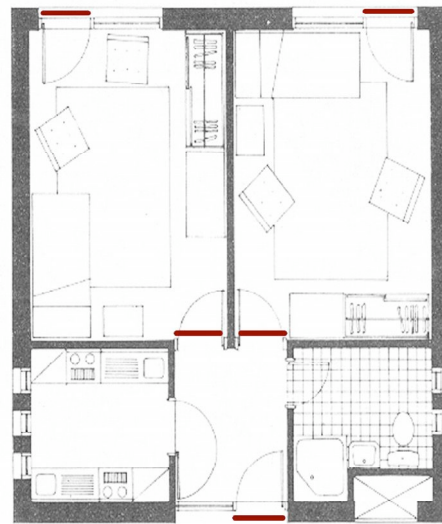
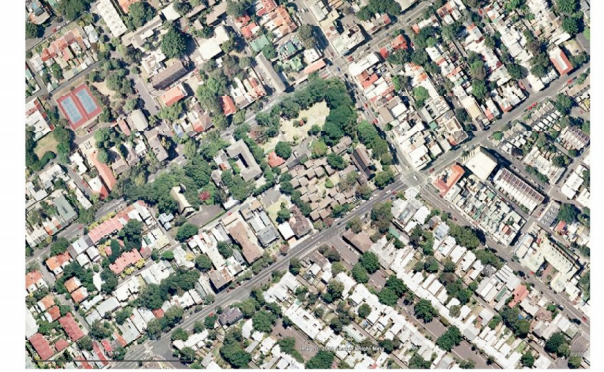
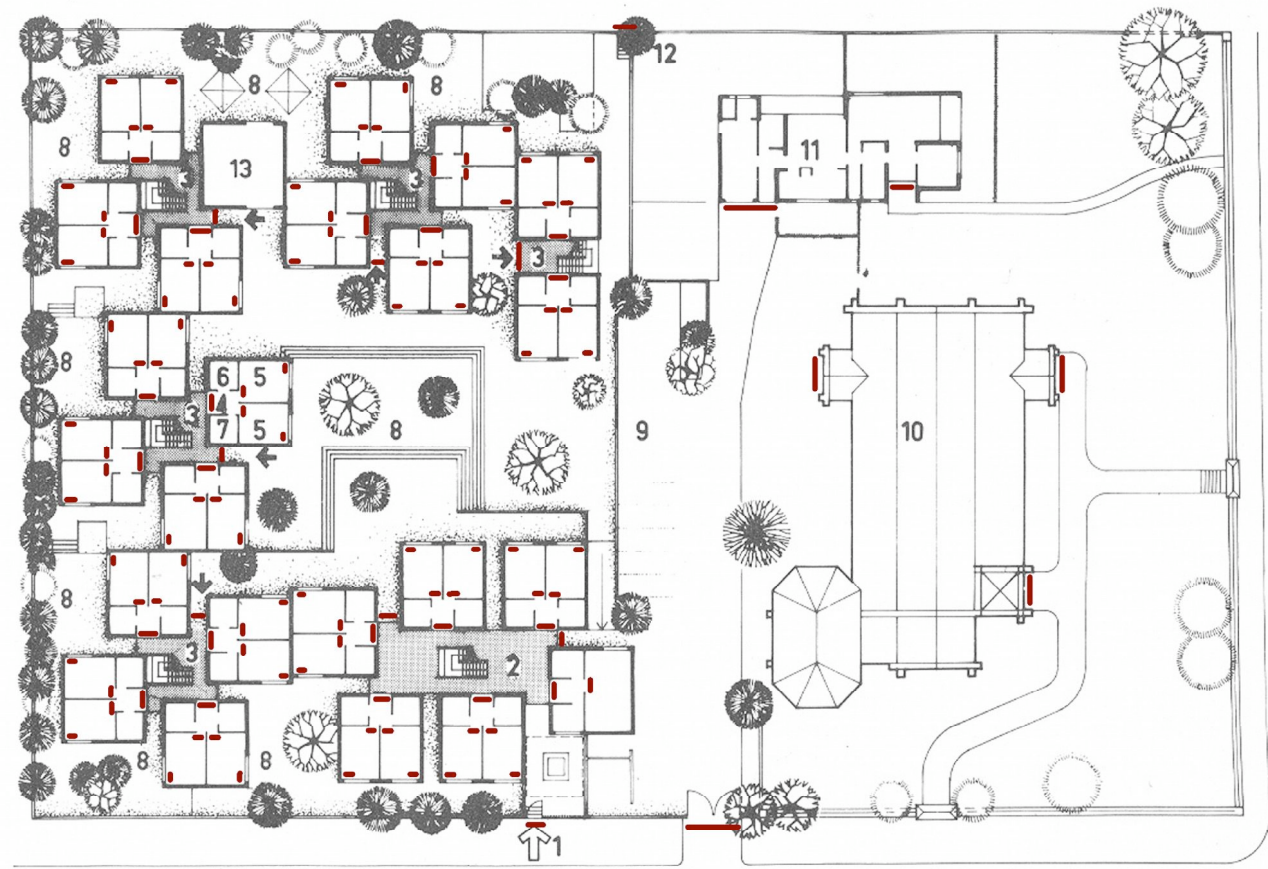


Depth Diagrams in Territorial Configurations Detail Housing Typology 1

Territorial Configuration Housing Typology 3



Territorial Configuration General Set-up



Kris Scheerlinck, doctoral candidate
 Universitat Ramon Llull, E.T.S.A. La Salle
 Barcelona, Spain, 2009-2010
Depth Configurations
 Proximity, Permeability and Territorial Boundaries in Urban Projects

- territorial transition
- overlap scenarios
- sequential gaps
- territorial depth

Illustrating Case Study: Residential Project, Hely, Bell, Horne, 1962-1964
 Site: Saint John's Village, Australia
DEPTH AND ACCESS SCENARIOS
 ref.: plans/photographs D. Mackay "Viviendas Plurifamiliares", GG, 1980