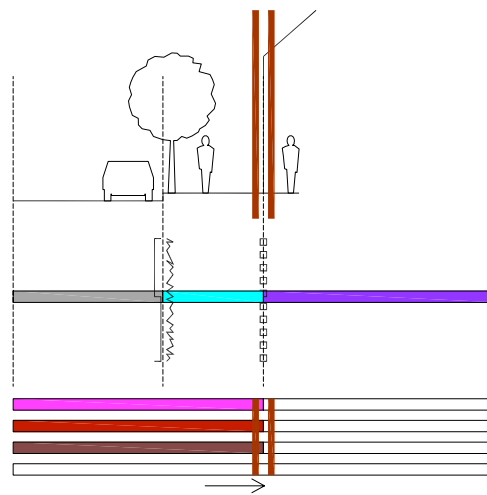


CROSS SECTION 17

ACTIVITY

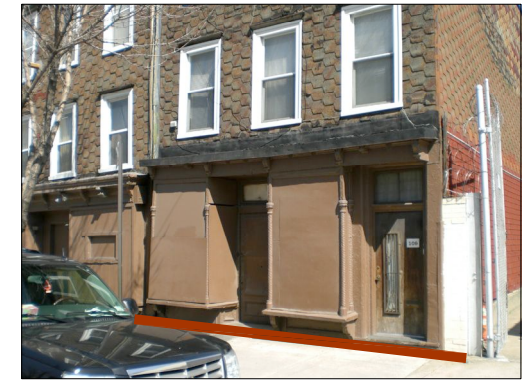
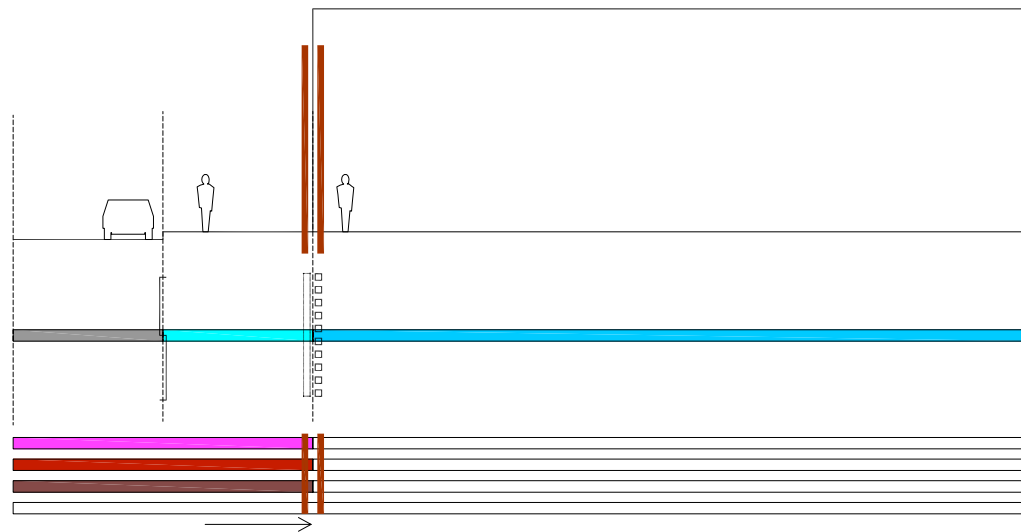
OPEN SPACE - BUILT SPACE
 NO RESTRICTED ACCESS - EXCLUSIVE ACCESS
 RESTRICTED ACCESS - EXCLUSIVE ACCESS
 DIFFERENTIAL COLLECTIVE SPACE
 VISUAL ACCESS

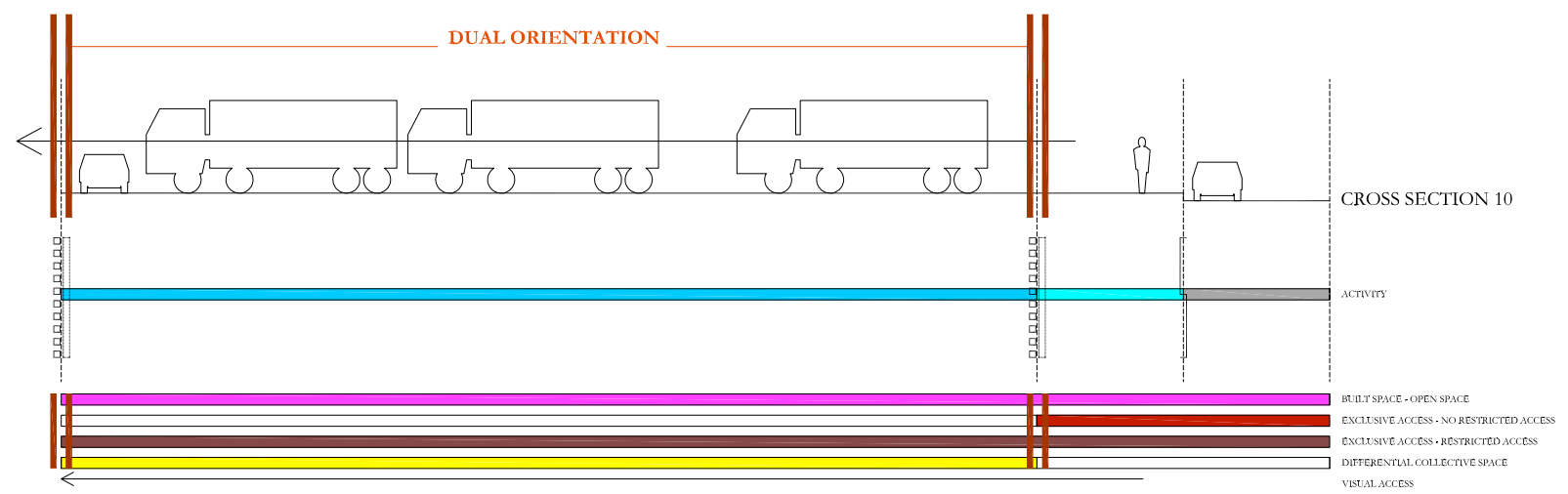
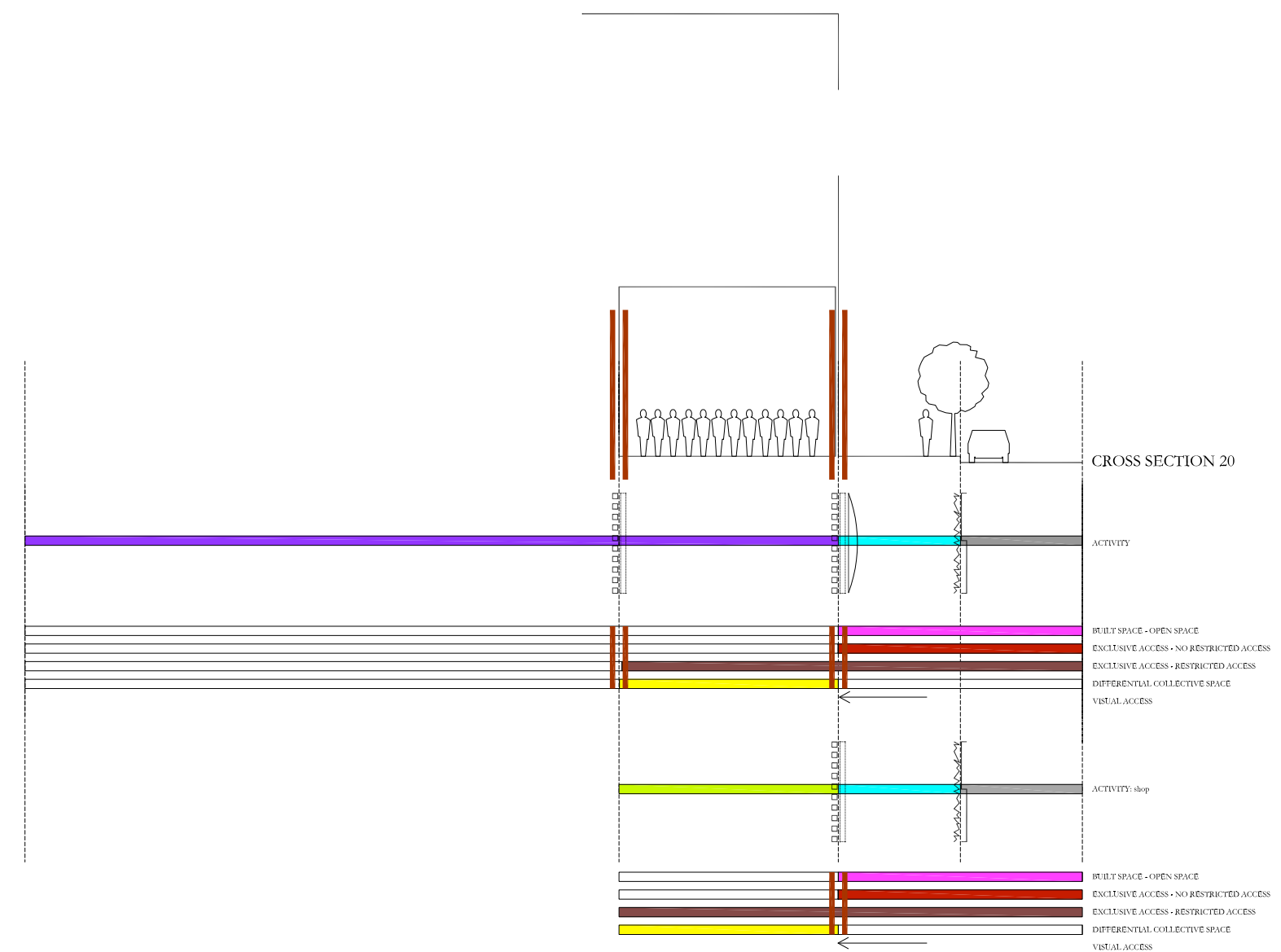


CROSS SECTION 18

ACTIVITY

OPEN SPACE - BUILT SPACE
 NO RESTRICTED ACCESS - EXCLUSIVE ACCESS
 RESTRICTED ACCESS - EXCLUSIVE ACCESS
 DIFFERENTIAL COLLECTIVE SPACE
 VISUAL ACCESS

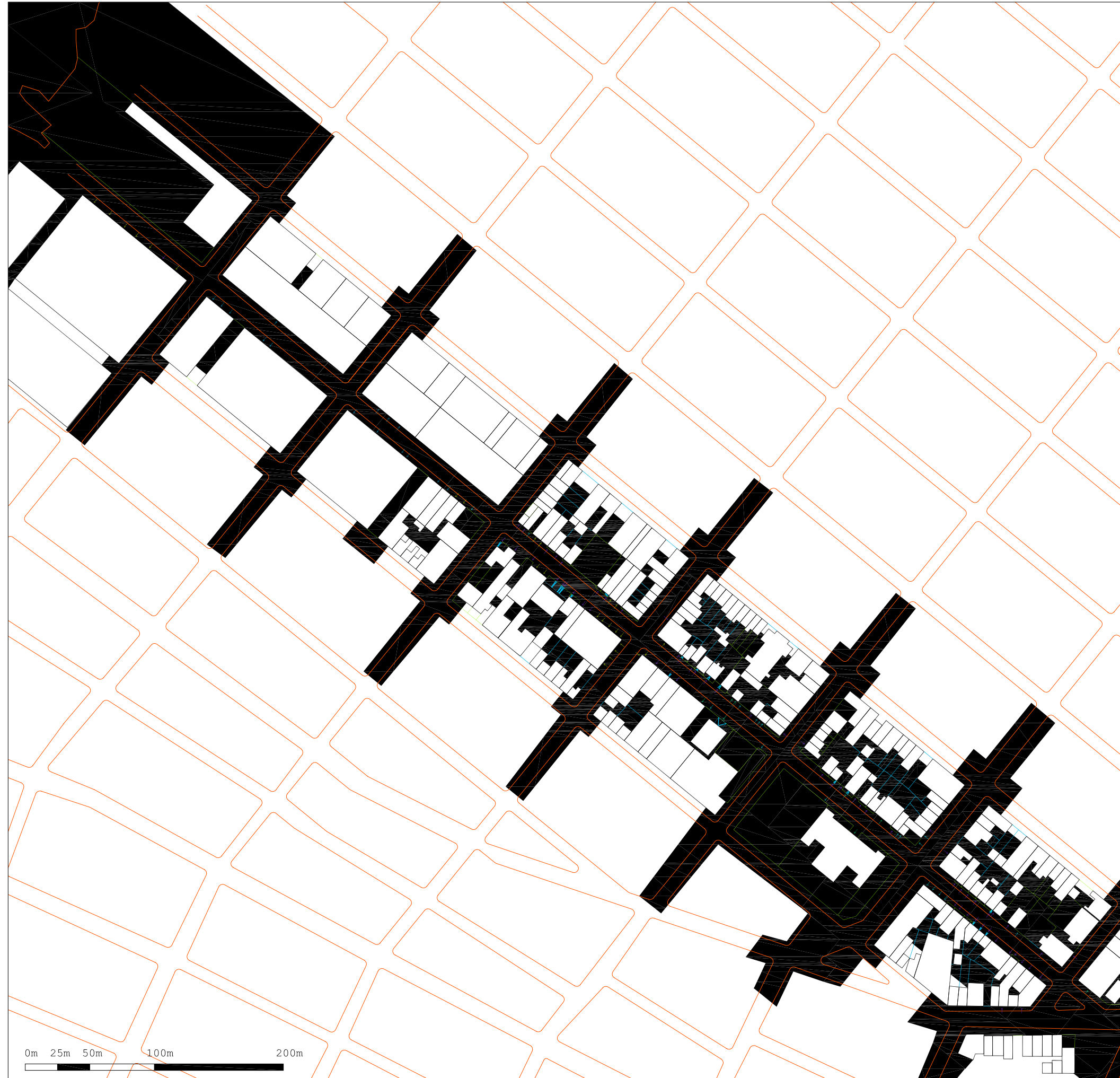




Kris Scheerlinck, doctoral candidate
 Universitat Ramon Llull, E.T.S.A. La Salle
 Barcelona, Spain, 2009-2010
Depth Configurations
 Proximity, Permeability and Territorial Boundaries in Urban Projects

- wall
- passway/door
- fence
- greenery
- topographic change
- technology
- change of pavement
- territorial boundary
- shared access

Illustrating Case Study: Williamsburgh, New York City, U.S.A.
 Site: North 5th Street
DEPTH AND ACCESS SCENARIOS
 base: in situ photographs & mapping



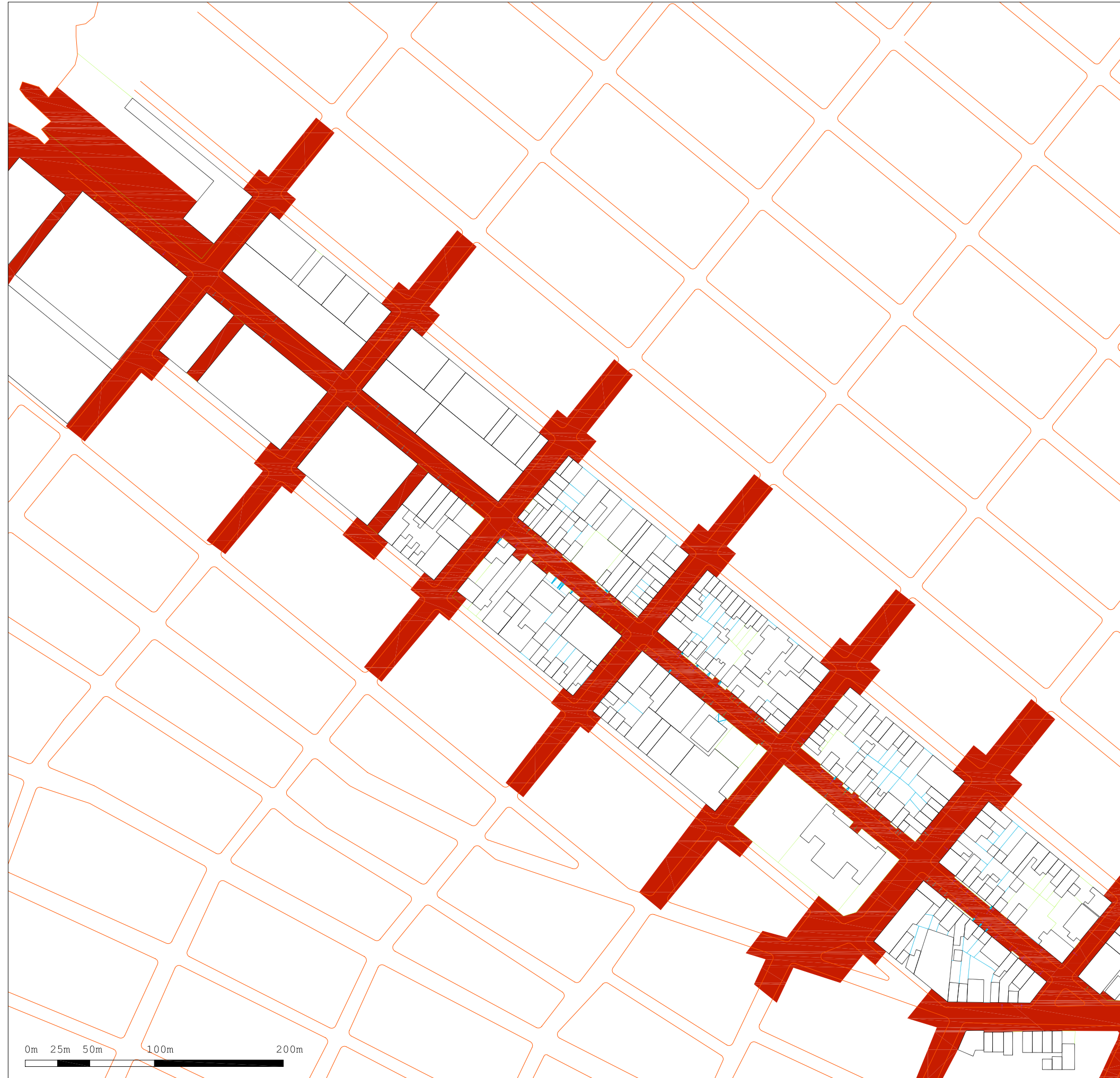
Kris Scheerlinck, doctoral candidate
 Universitat Ramon Llull, E.T.S.A. La Salle
 Barcelona, Spain, 2009-2010
Depth Configurations
 Proximity, Permeability and Territorial Boundaries in Urban Projects

- boundary limits
- open space
- traffic systems
- ↘ housing entrance
- ↘ commercial entrance
- ↘ service/facility entrance
- ↘ garden entrance
- ↘ warehouse/industry entrance

Illustrating Case Study: Williamsburgh, New York City, U.S.A.
 Site: North 5th Street

Figure/ground map: open space
 base: in situ photographs & mapping


north
 scale: graphic

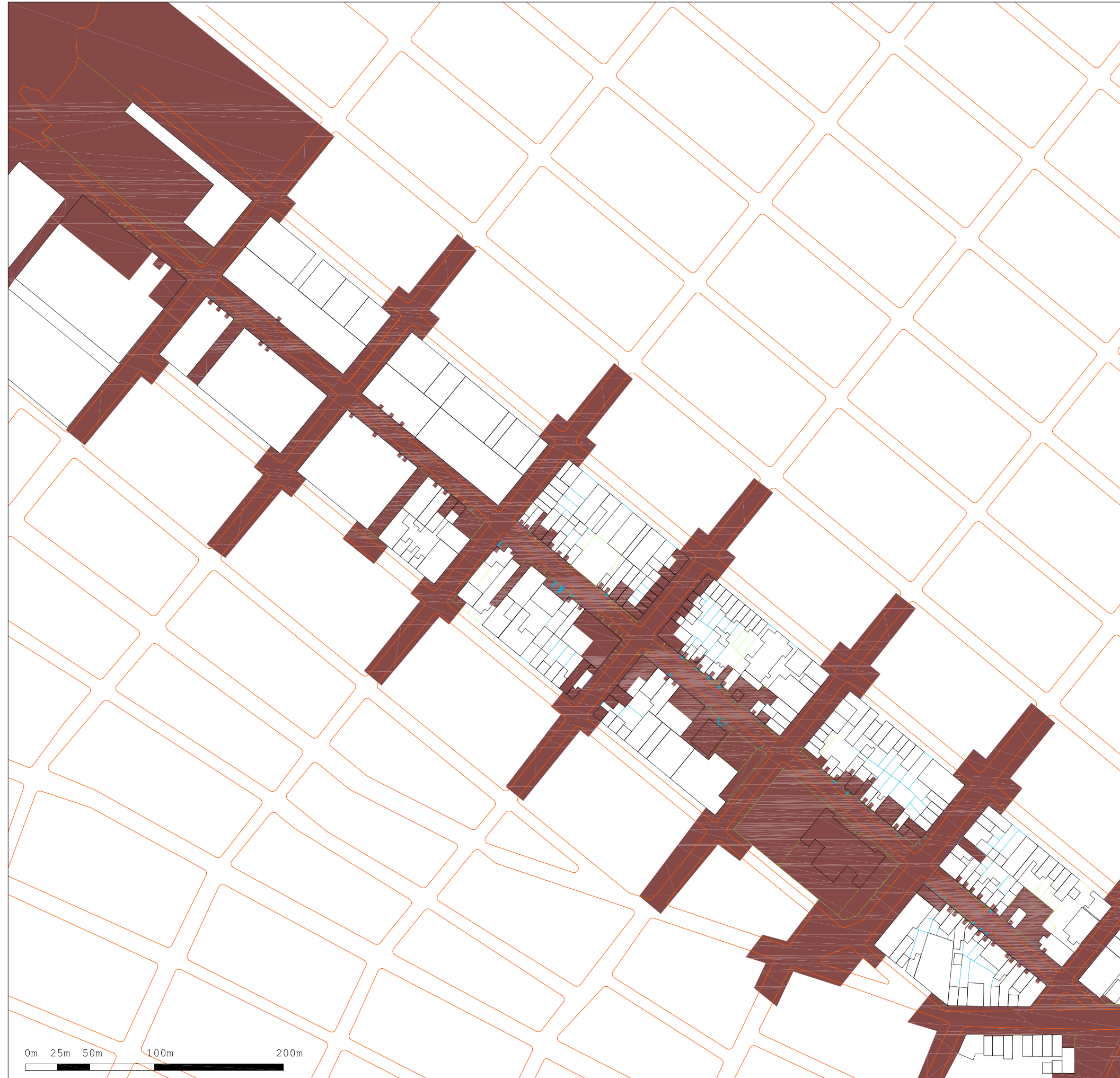


Kris Scheerlinck, doctoral candidate
 Universitat Ramon Llull, E.T.S.A. La Salle
 Barcelona, Spain, 2009-2010
Depth Configurations
 Proximity, Permeability and Territorial Boundaries in Urban Projects

- boundary limits
- █ accessible area without restrictions
- traffic systems
- ↘ housing entrance
- ↘ commercial entrance
- ↘ service/facility entrance
- ↘ garden entrance
- ↘ warehouse/industry entrance

Illustrating Case Study: Williamsburgh, New York City, U.S.A.
 Site: North 5th Street

Accessible area without restrictions (public property) north 
 base: in situ photographs & mapping scale: graphic



Kris Scheerlinck, doctoral candidate
 Universitat Ramon Llull, E.T.S.A. La Salle
 Barcelona, Spain, 2009-2010
Depth Configurations
 Proximity, Permeability and Territorial Boundaries in Urban Projects

- boundary limits
- accessible area with restrictions
- traffic systems
- housing entrance
- commercial entrance
- service/facility entrance
- garden entrance
- warehouse/industry entrance

Illustrating Case Study: Williamsburgh, New York City, U.S.A.
 Site: North 5th Street

Accessible area with restrictions
 base: in situ photographs & mapping

north scale: graphic



Kris Scheerlinck, doctoral candidate
 Universitat Ramon Llull, E.T.S.A. La Salle
 Barcelona, Spain, 2009-2010
Depth Configurations
 Proximity, Permeability and Territorial Boundaries in Urban Projects

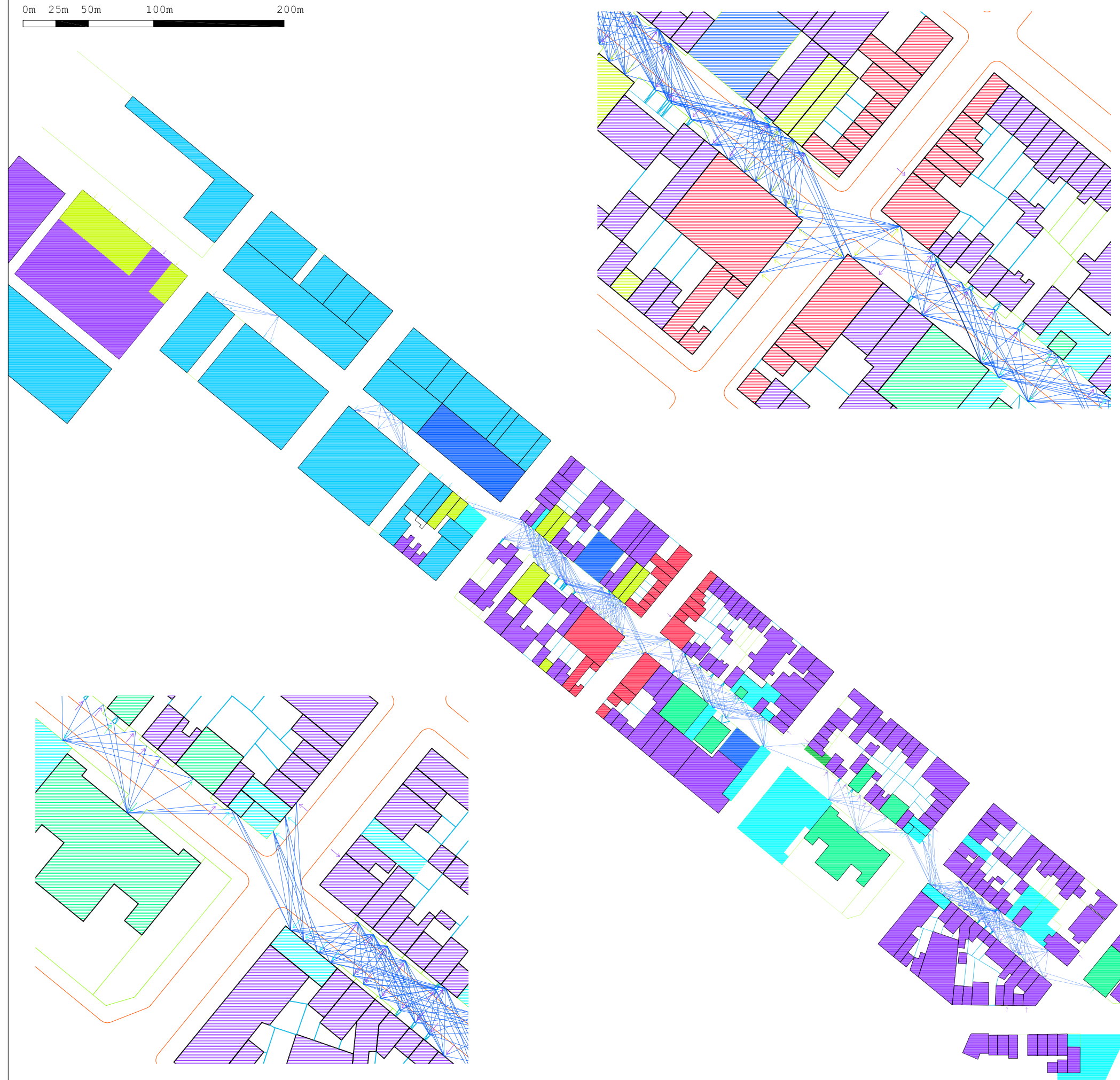
- boundary limits
- accessible area with restrictions
- traffic systems
- housing entrance
- commercial entrance
- service/facility entrance
- garden entrance
- warehouse/industry entrance

Illustrating Case Study: Williamsburgh, New York City, U.S.A.
 Site: North 5th Street

Accessible area with restrictions
 base: in situ photographs & mapping

north scale: graphic

0m 25m 50m 100m 200m



Kris Scheerlinck, doctoral candidate
 Universitat Ramon Llull, E.T.S.A. La Salle
 Barcelona, Spain, 2009-2010

Depth Configurations
 Proximity, Permeability and Territorial Boundaries in Urban Projects

- visual config.(R=50m)
- traffic systems
- parking
- commercial+housing
- housing
- commercial
- service/facility
- vacant/under construction
- warehouse/industry
- garden
- corresp. entrance

Illustrating Case Study: Williamsburgh, New York City, U.S.A.
 Site: North 5th Street

Activity map
 base: in situ photographs & mapping

north
 scale: graphic



Kris Scheerlinck, doctoral candidate
 Universitat Ramon Llull, E.T.S.A. La Salle
 Barcelona, Spain, 2009-2010
Depth Configurations
 Proximity, Permeability and Territorial Boundaries in Urban Projects

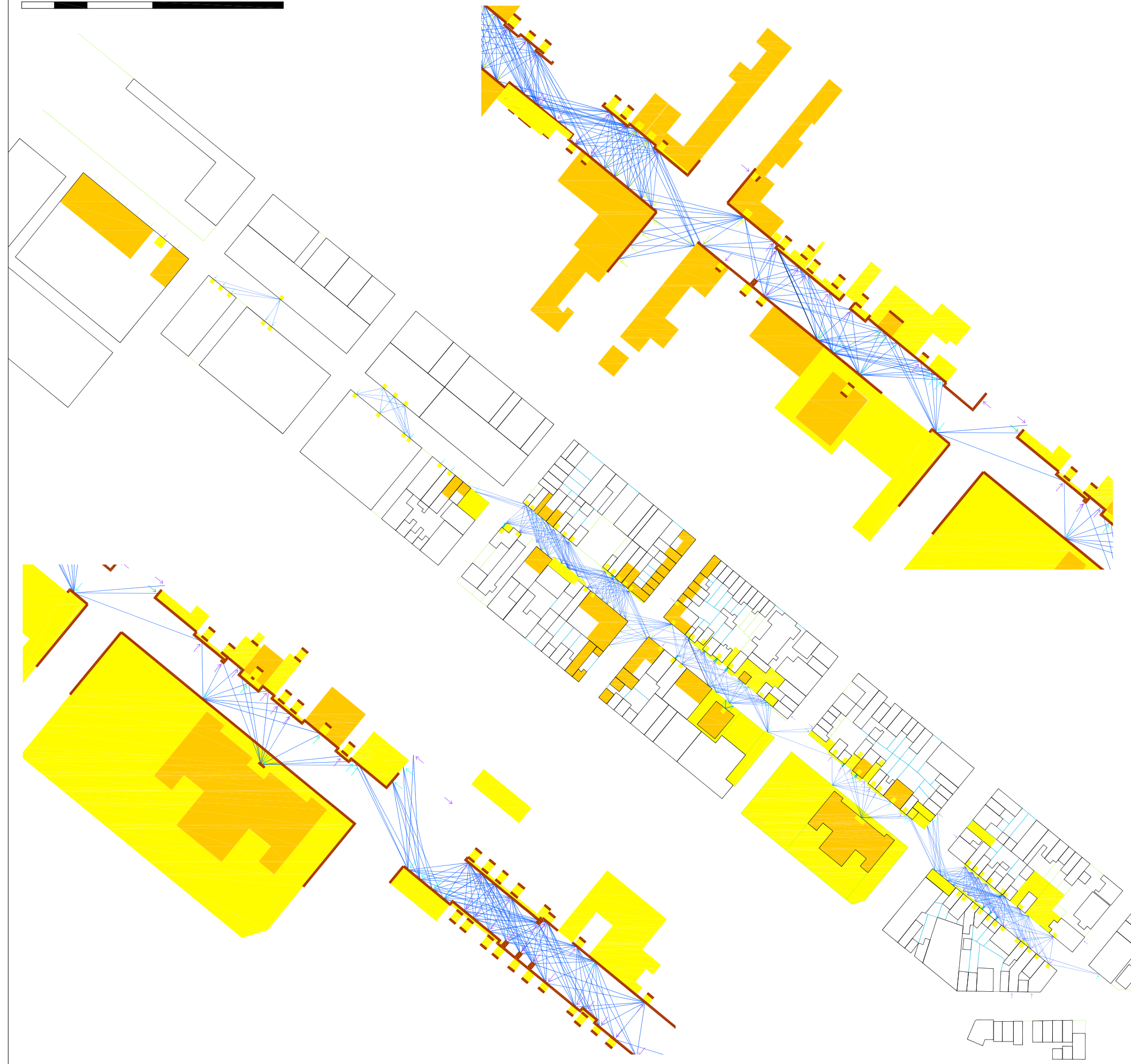
- boundary limit
- █ visual connection
- traffic systems
- visual relation accesses within 50m radius
- ↘ housing entrance
- ↘ commercial entrance
- ↘ service/facility entrance
- ↘ garden entrance
- ↘ warehouse/industry entrance

Illustrating Case Study: Williamsburgh, New York City, U.S.A.
 Site: North 5th Street

Visual depth and visual access control
 base: in situ photographs & mapping

north
 scale: graphic

0m 25m 50m 100m 200m



Kris Scheerlinck, doctoral candidate
 Universitat Ramon Llull, E.T.S.A. La Salle
 Barcelona, Spain, 2009-2010
Depth Configurations
 Proximity, Permeability and Territorial Boundaries in Urban Projects

- territorial depth:
change in vertical hierarchy
- boundary limits
- differential collective
space: time sensitive
- differential collective space
- visual config.(R=50m)
- ↘ housing entrance
- ↘ commercial entrance
- ↘ service/facility entrance
- ↘ garden entrance
- ↘ warehouse/industry entrance

Illustrating Case Study: Williamsburgh, New York City, U.S.A.
 Site: North 5th Street

Boundaries and Depth
 base: in situ photographs & mapping

north
 scale: graphic



Kris Scheerlinck, doctoral candidate
 Universitat Ramon Llull, E.T.S.A. La Salle
 Barcelona, Spain, 2009-2010
Depth Configurations
 Proximity, Permeability and Territorial Boundaries in Urban Projects

- differential collective space: time sensitive
- differential collective space
- territorial depth: change in vertical hierarchy
- building limit
- boundaries
- housing entrance
- commercial entrance
- service/facility entrance
- garden entrance
- warehouse/industry entrance

Illustrating Case Study: Williamsburgh, New York City, U.S.A.
 Site: North 5th Street

Differential collective space and territorial depth
 base: in situ photographs & mapping

north scale: graphic