

UNIVERSITAT DE BARCELONA

FACULTAT DE FARMÀCIA

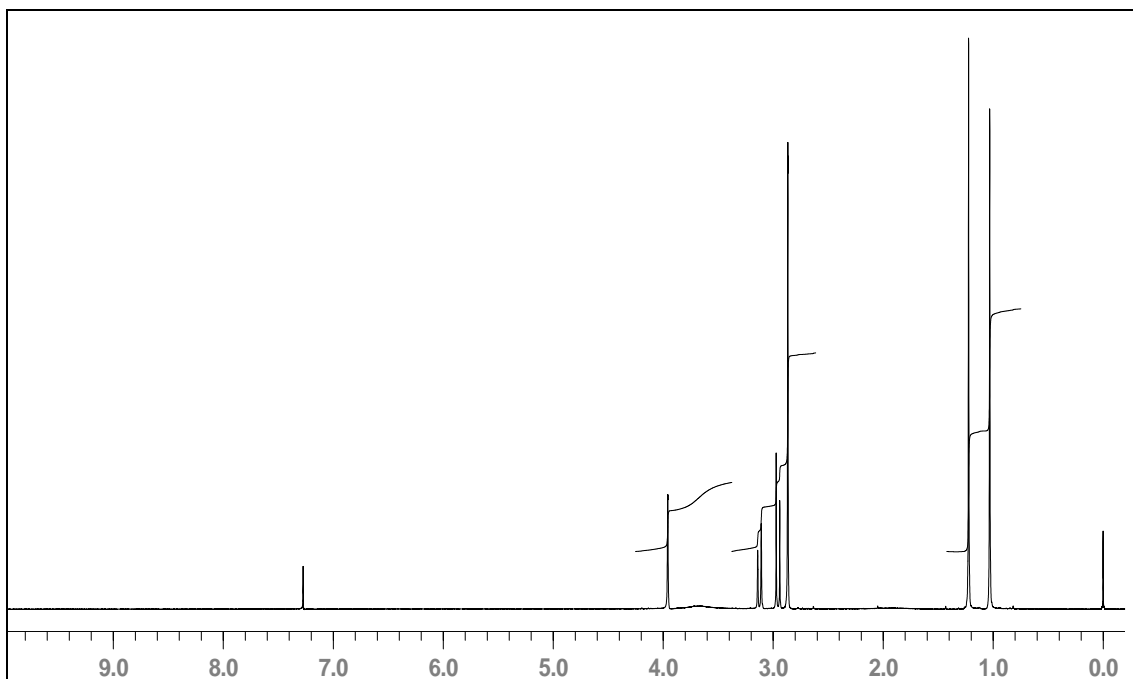
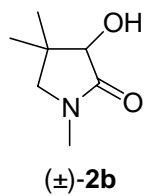
DEPARTAMENT DE FARMACOLOGIA I QUÍMICA TERAPÈUTICA

SÍNTESI DE NOVES PANTOLACTAMES *N*-SUBSTITUÏDES. NOVES APLICACIONS DE
L'(*R*)- I (*S*)-*N*-FENILPANTOLACTAMA EN LA SÍNTESI DE FÀRMACS I COMPOSTOS
D'INTERÈS BIOLÒGIC EN FORMA ENANTIOPURA

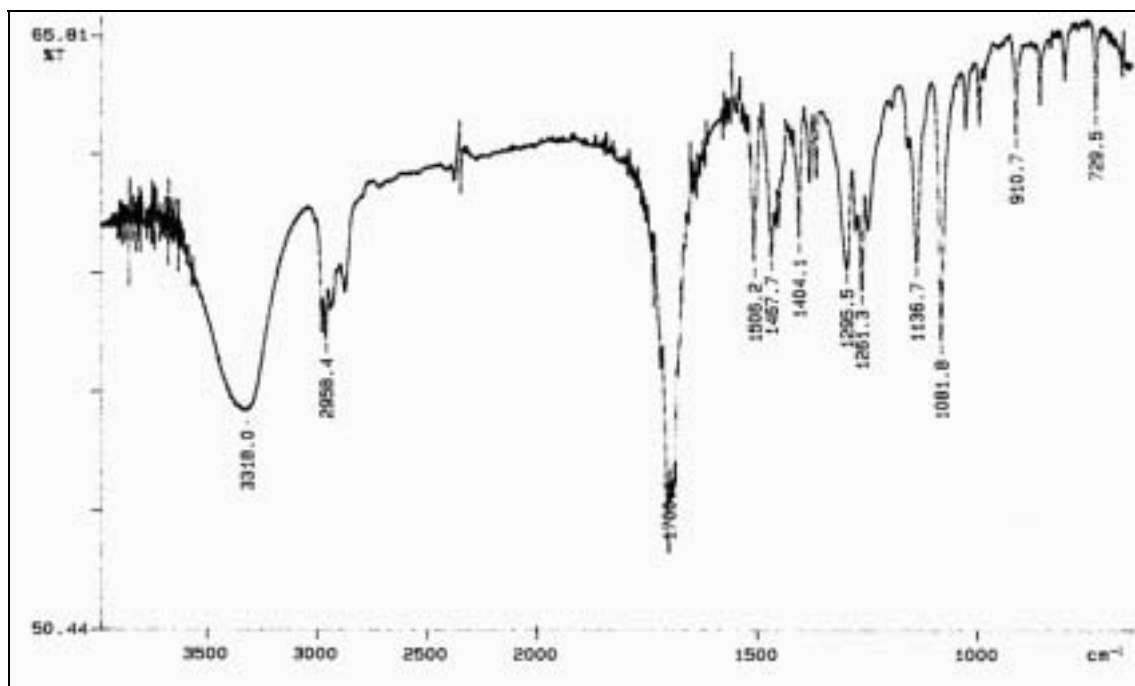
LAURA SÁNCHEZ SALGUERO
2006

ESPECTRES

Espectres

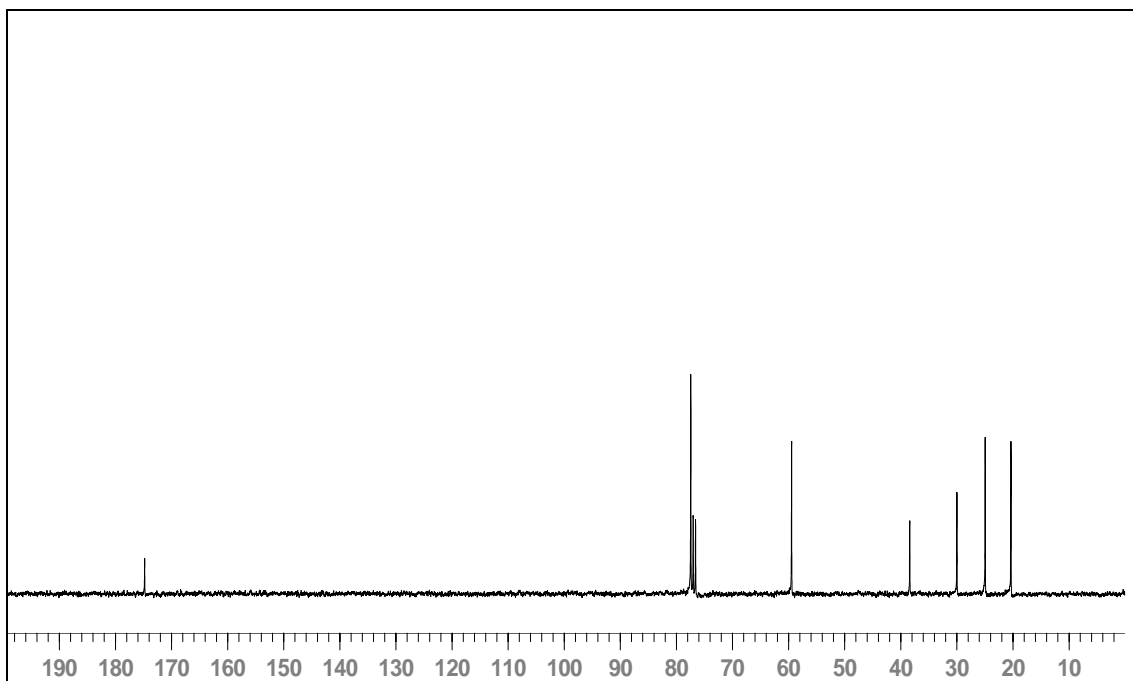
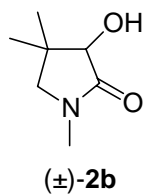


^1H -RMN (300 MHz, CDCl_3).

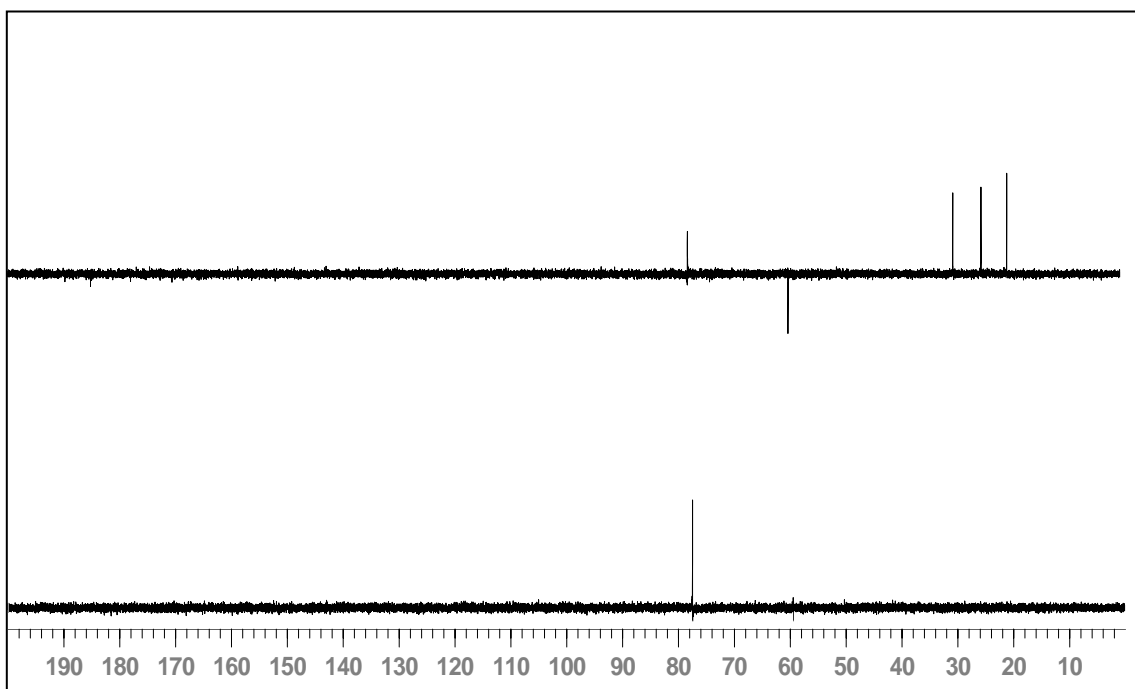


IR (KBr).

Espectres

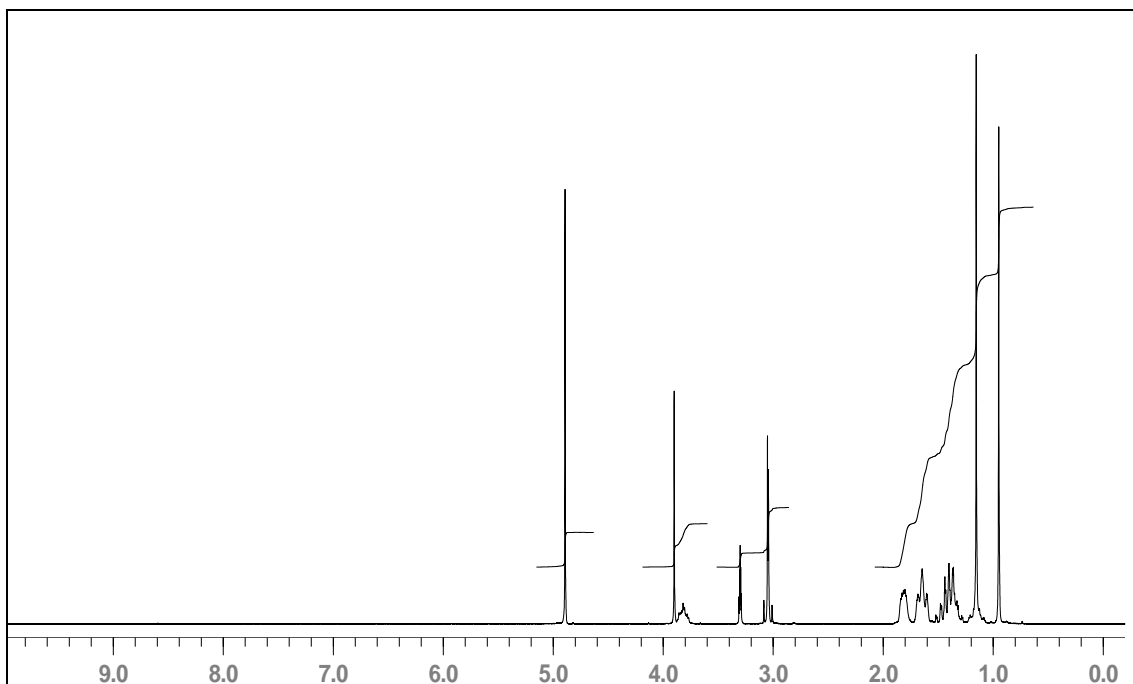
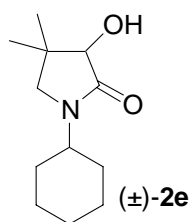


^{13}C -RMN (75'4 MHz, CDCl_3).

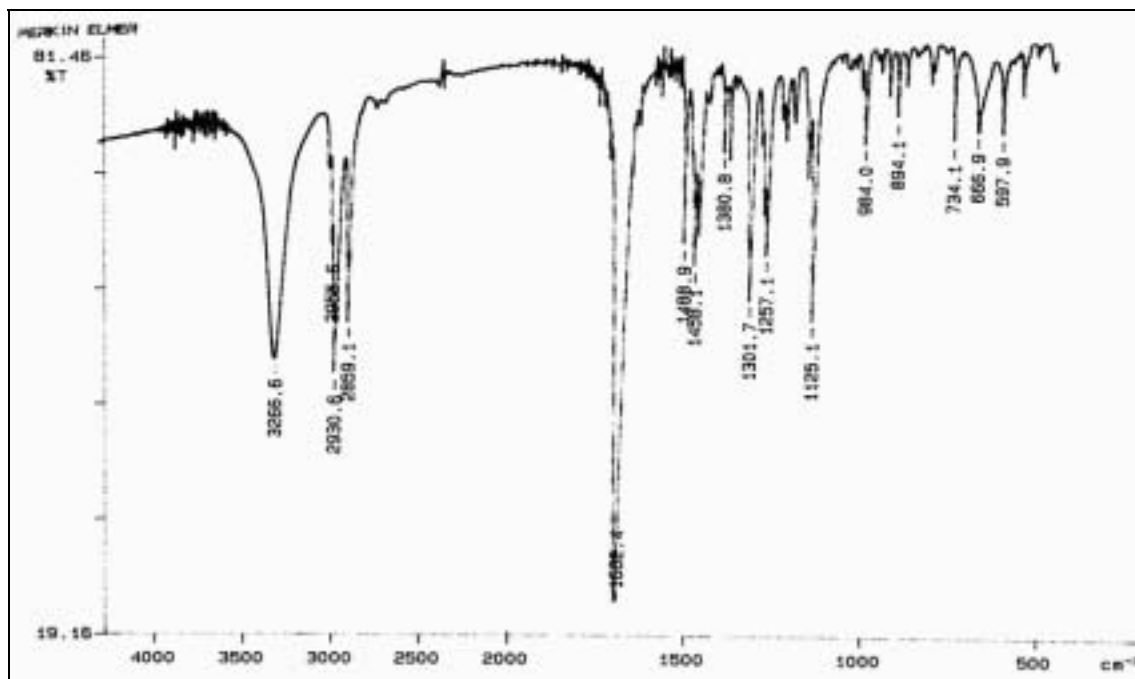


^{13}C -RMN (75'4 MHz, CDCl_3), DEPT.

Espectres

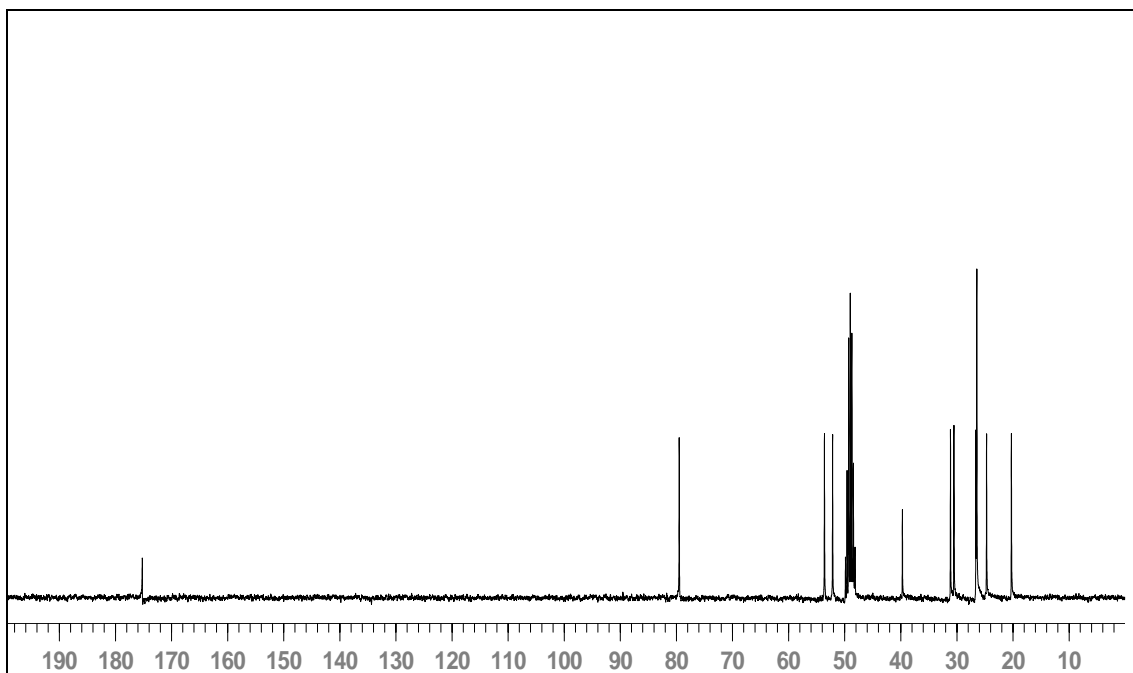
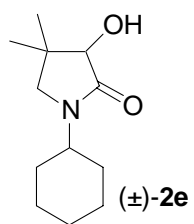


¹H-RMN (300 MHz, CD₃OD).

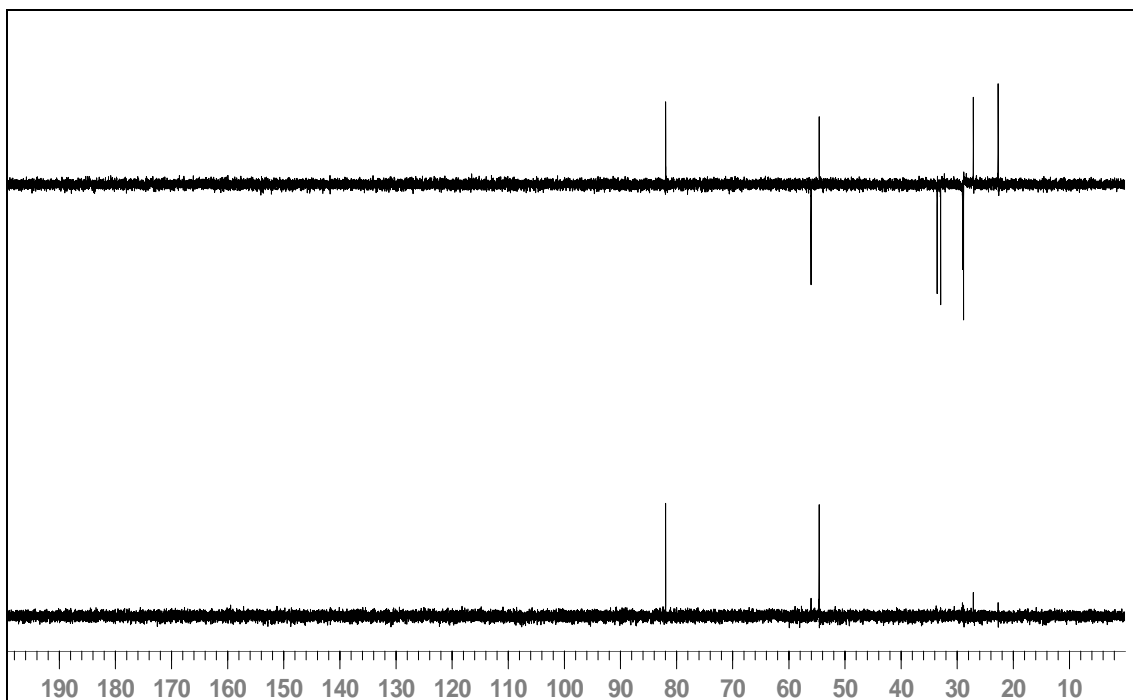


IR (KBr).

Espectres

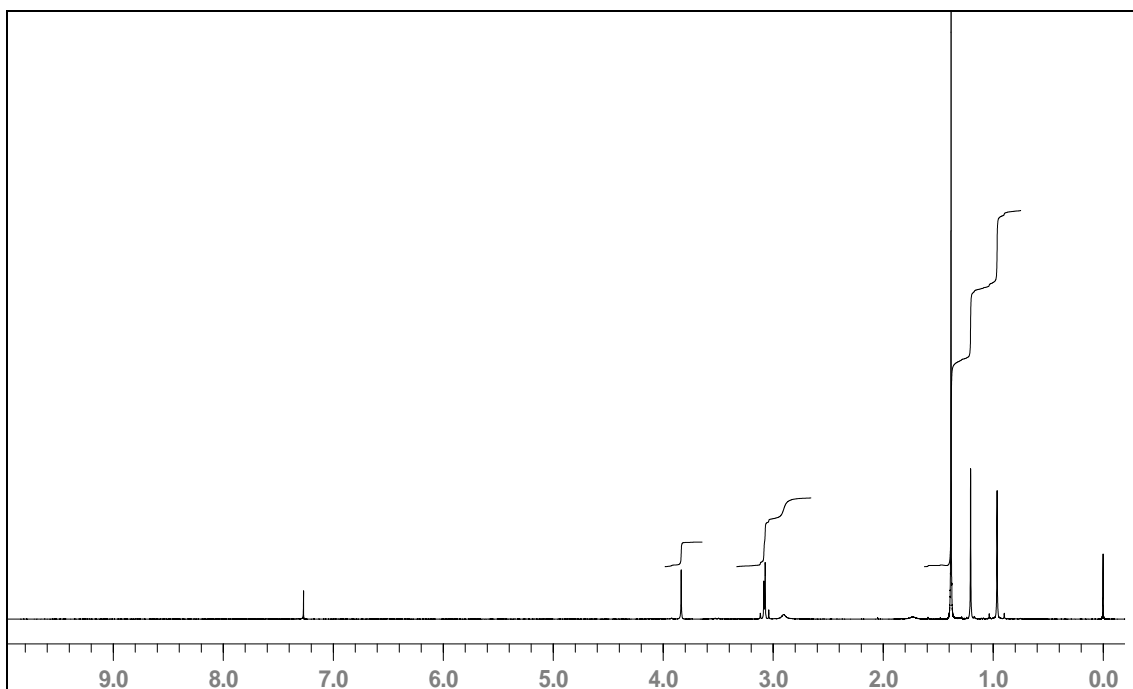
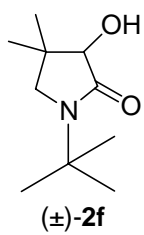


¹³C-RMN (75.4 MHz, CD₃OD).

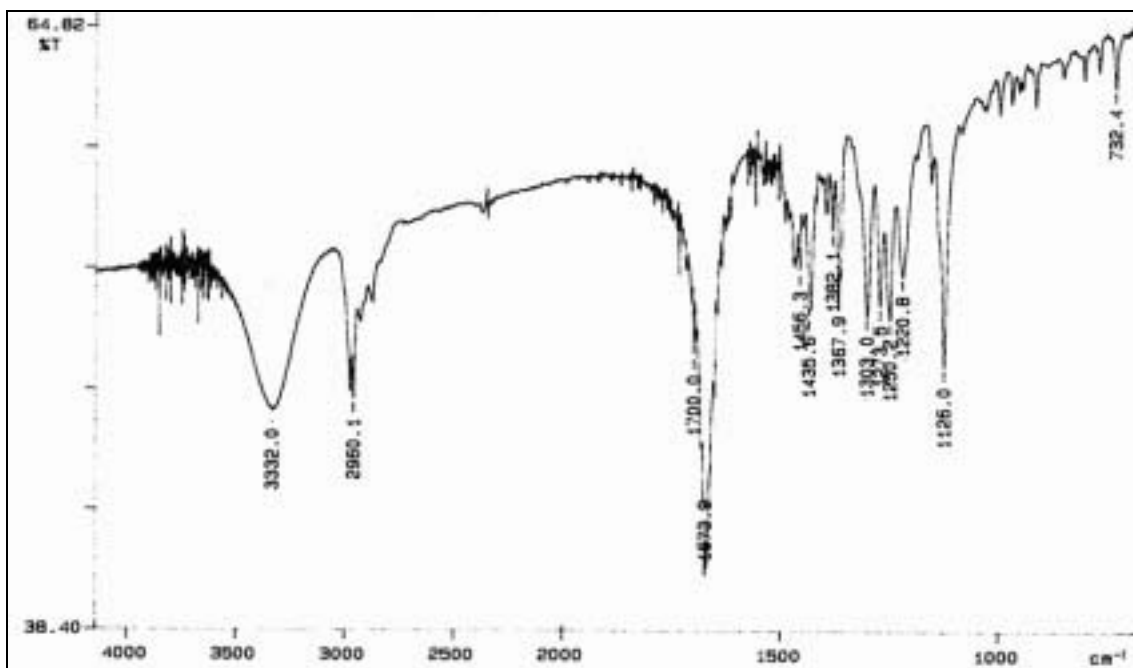


¹³C-RMN (75.4 MHz, CD₃OD), DEPT.

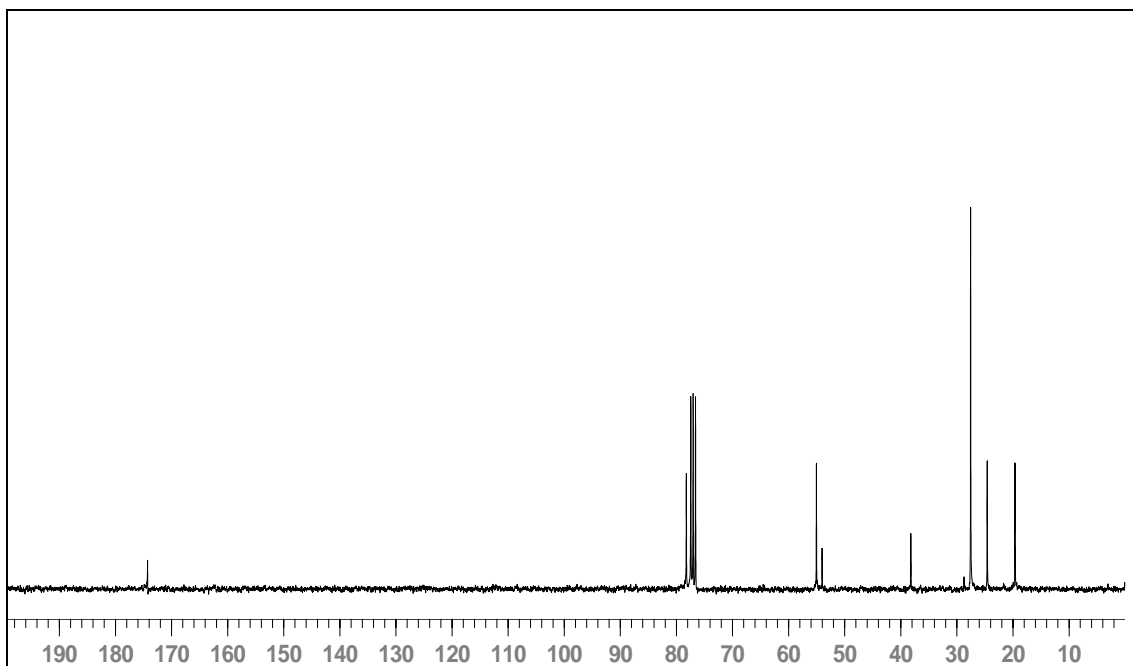
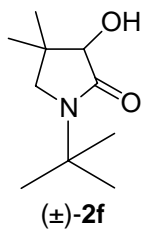
Espectres



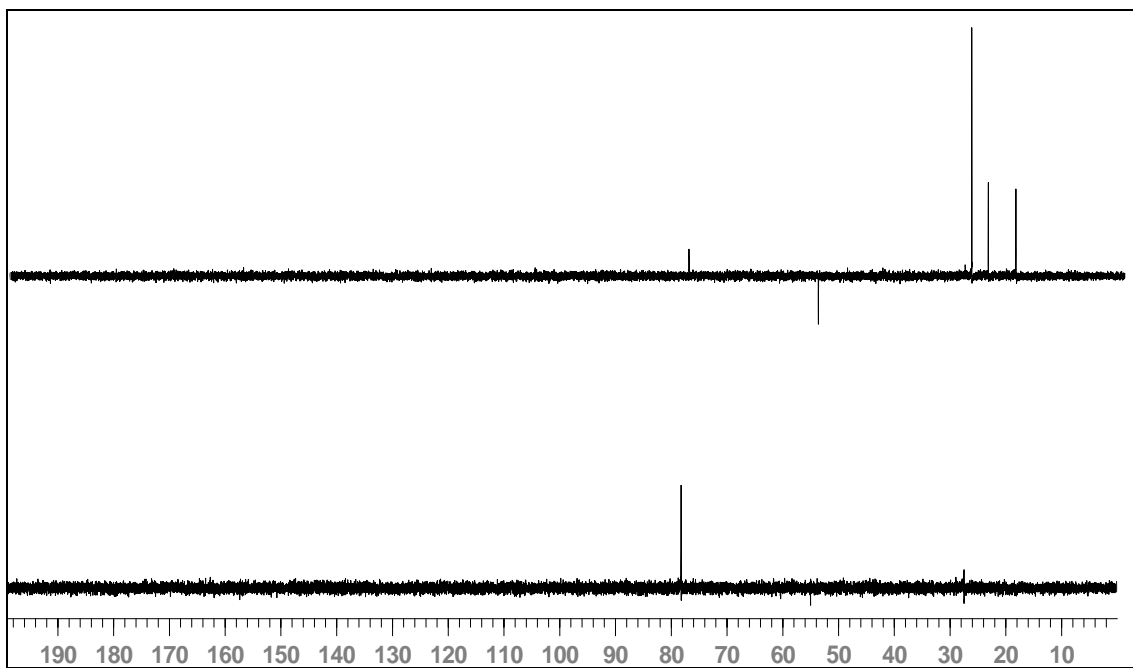
¹H-RMN (300 MHz, CDCl₃).



IR (KBr).

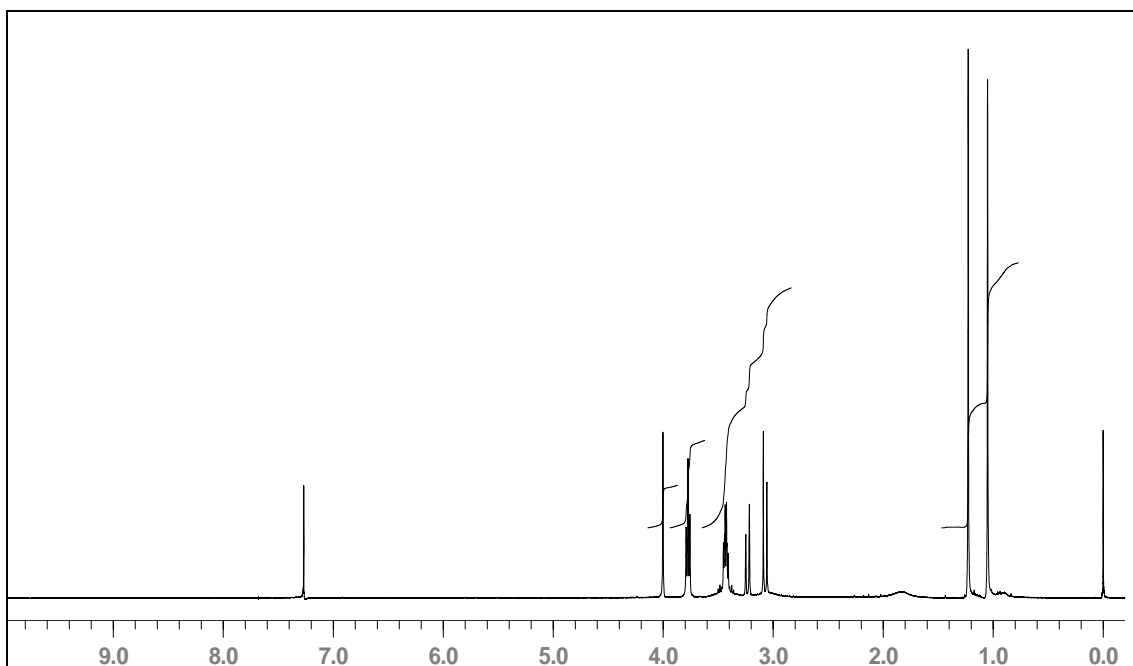
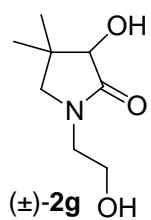


^{13}C -RMN (75.4 MHz, CDCl_3).

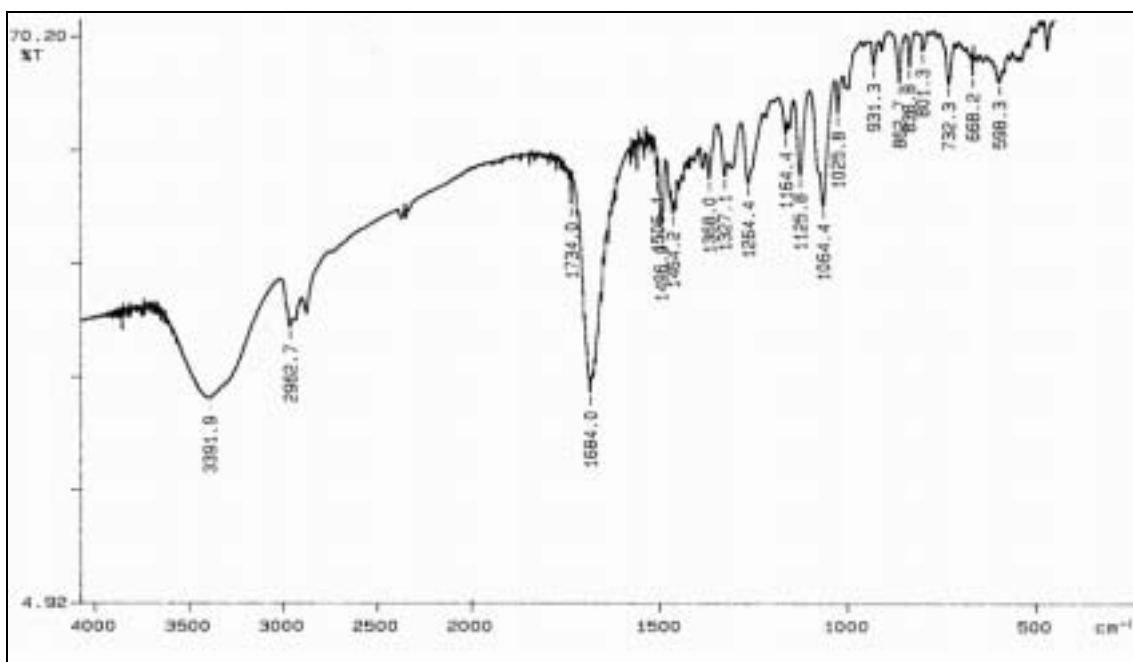


^{13}C -RMN (75.4 MHz, CDCl_3), DEPT.

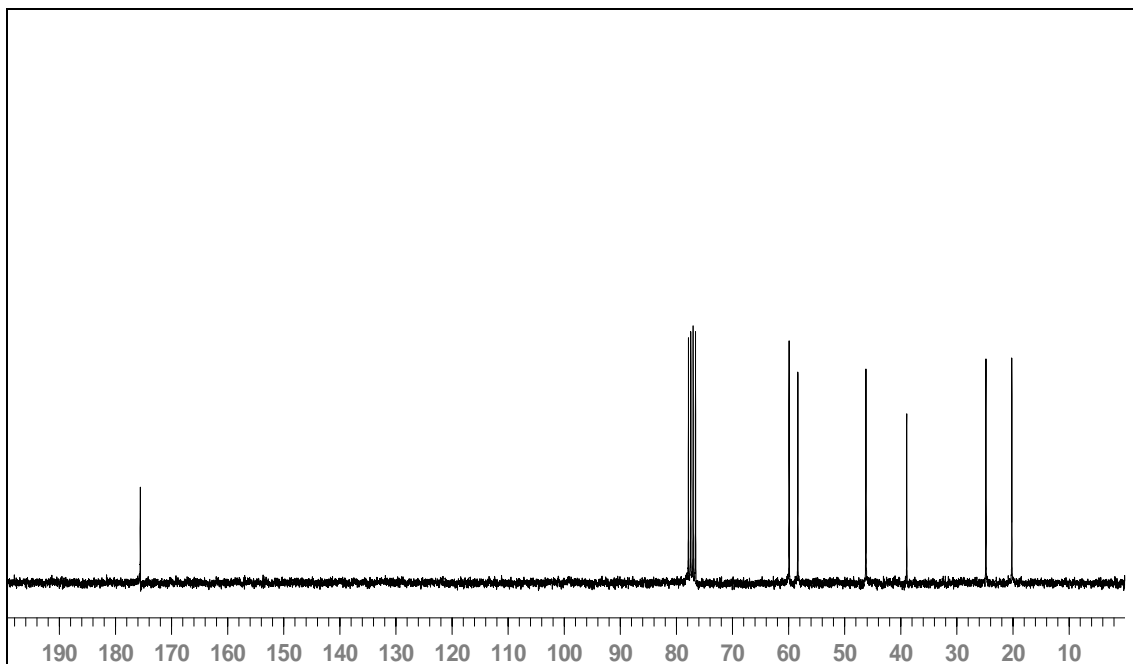
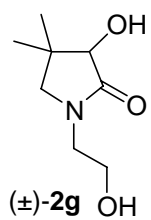
Espectres



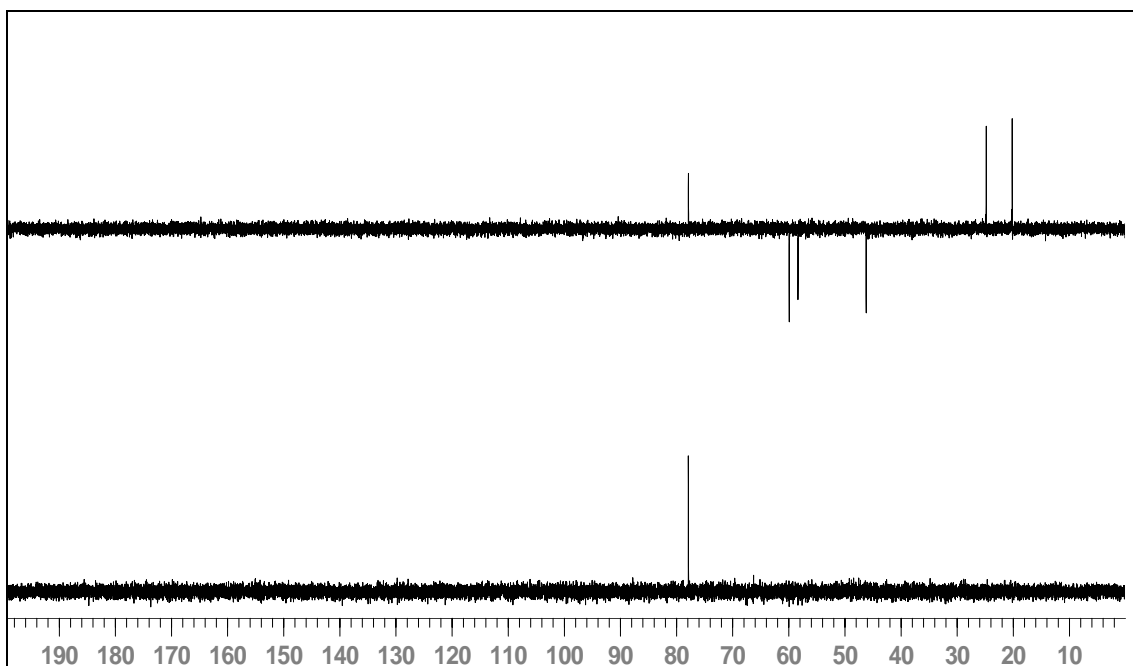
¹H-RMN (300 MHz, CDCl₃).



IR (KBr).

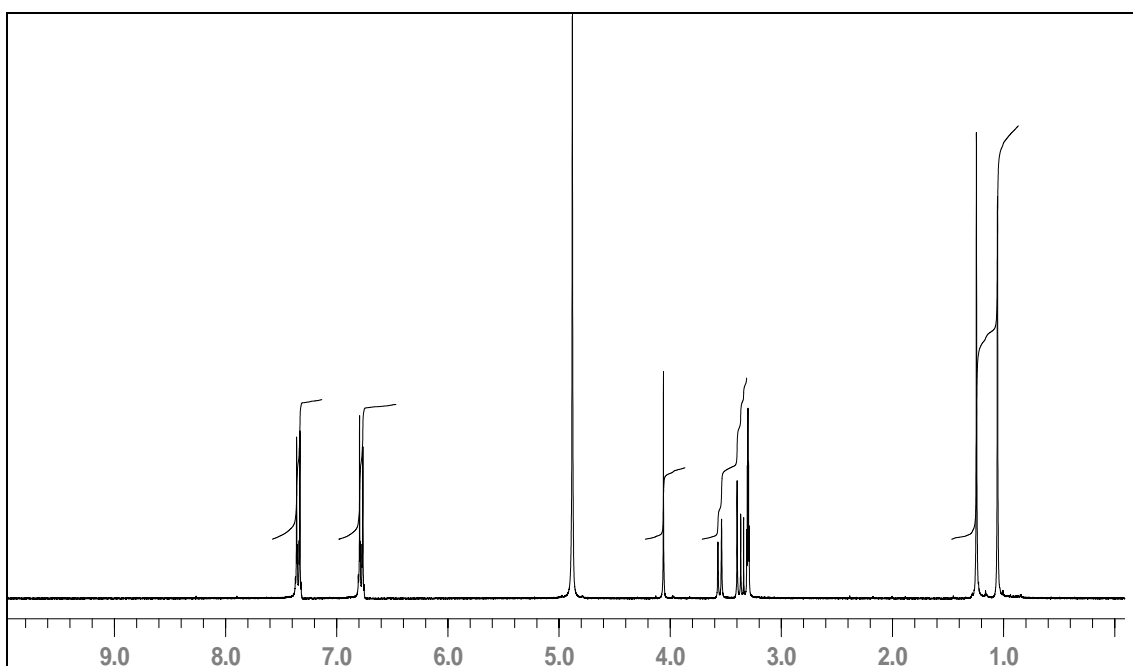
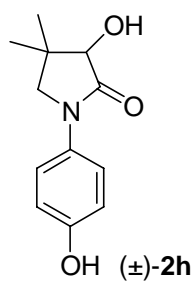


¹³C-RMN (75.4 MHz, CDCl₃).

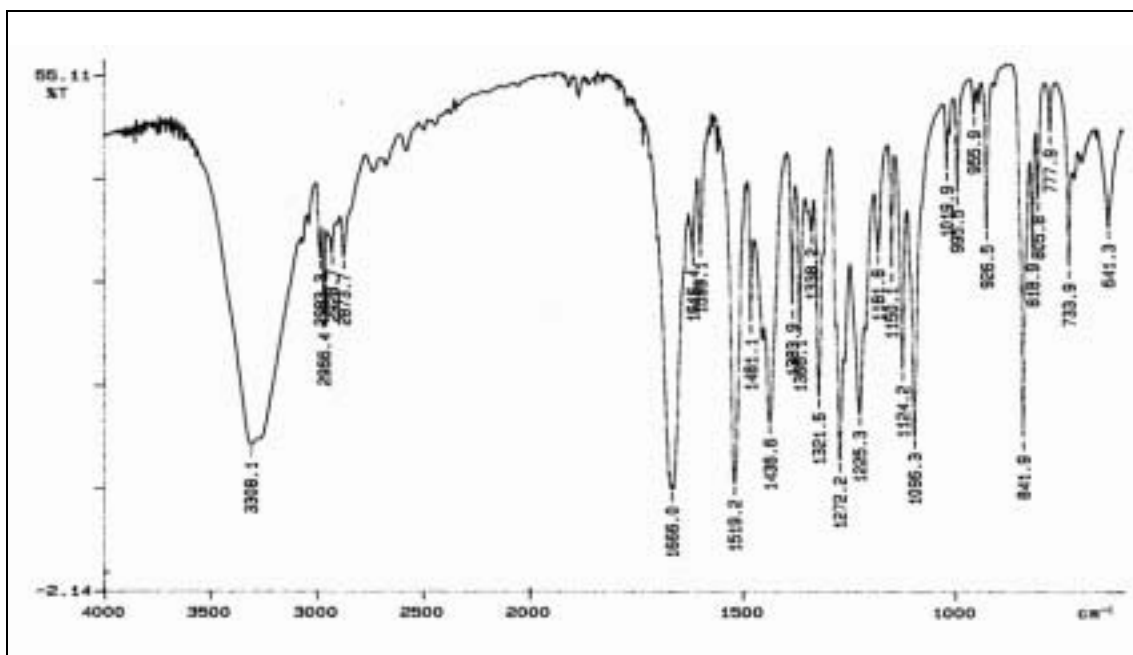


¹³C-RMN (75.4 MHz, CDCl₃), DEPT.

Espectres

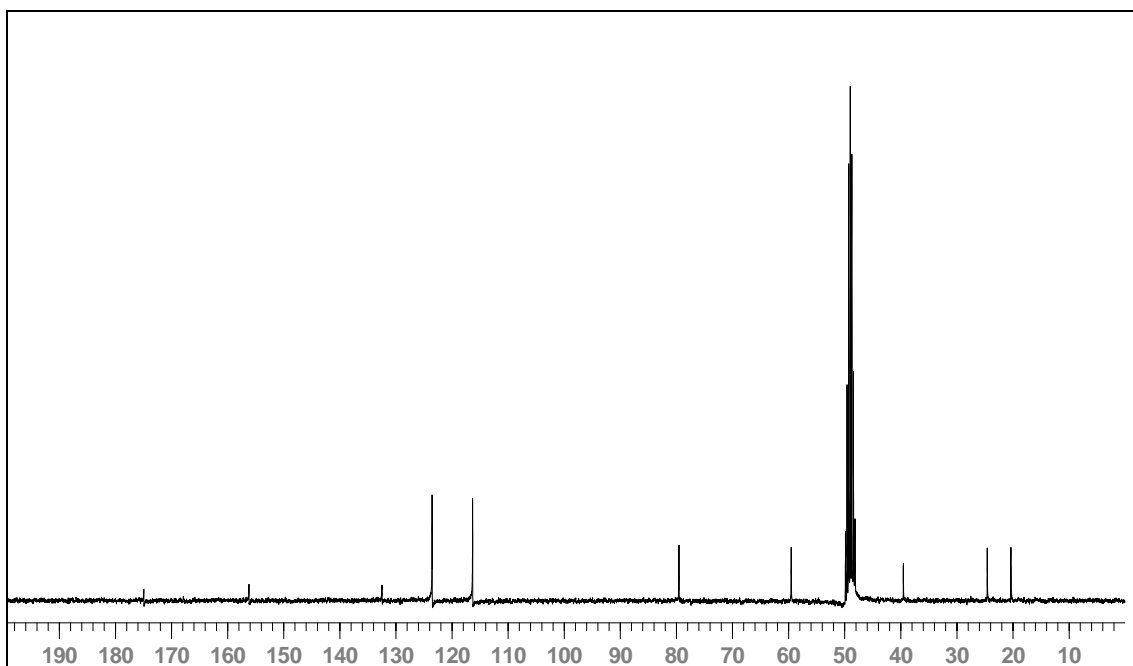
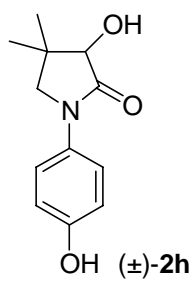


$^1\text{H-NMR}$ (300 MHz, CD_3OD).

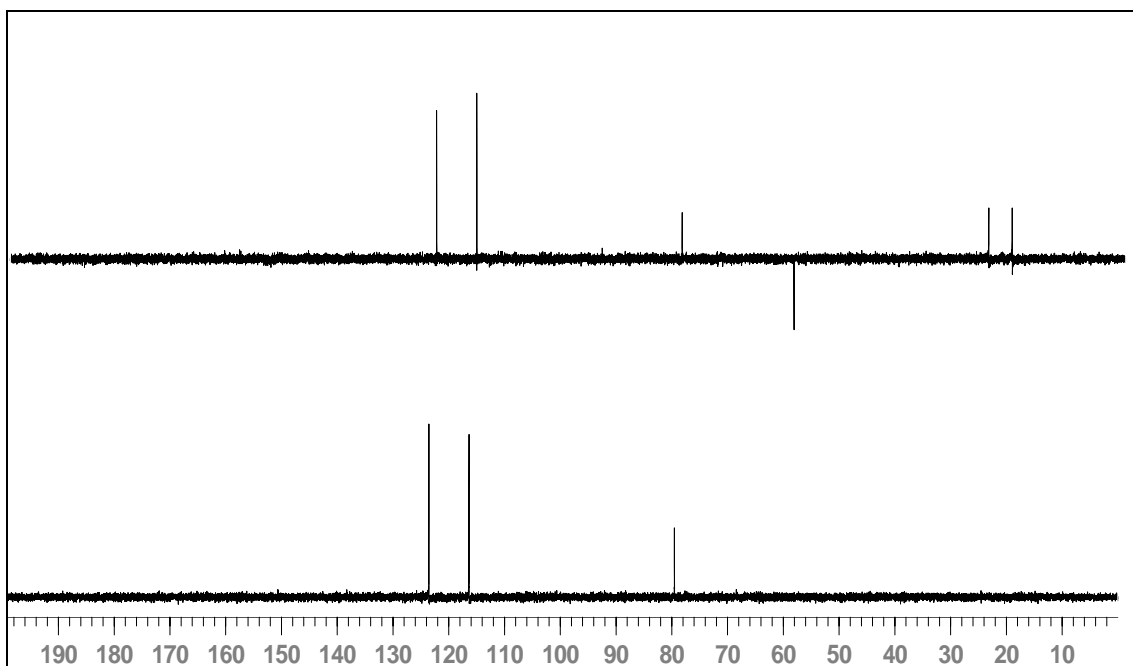


IR (KBr).

Espectres

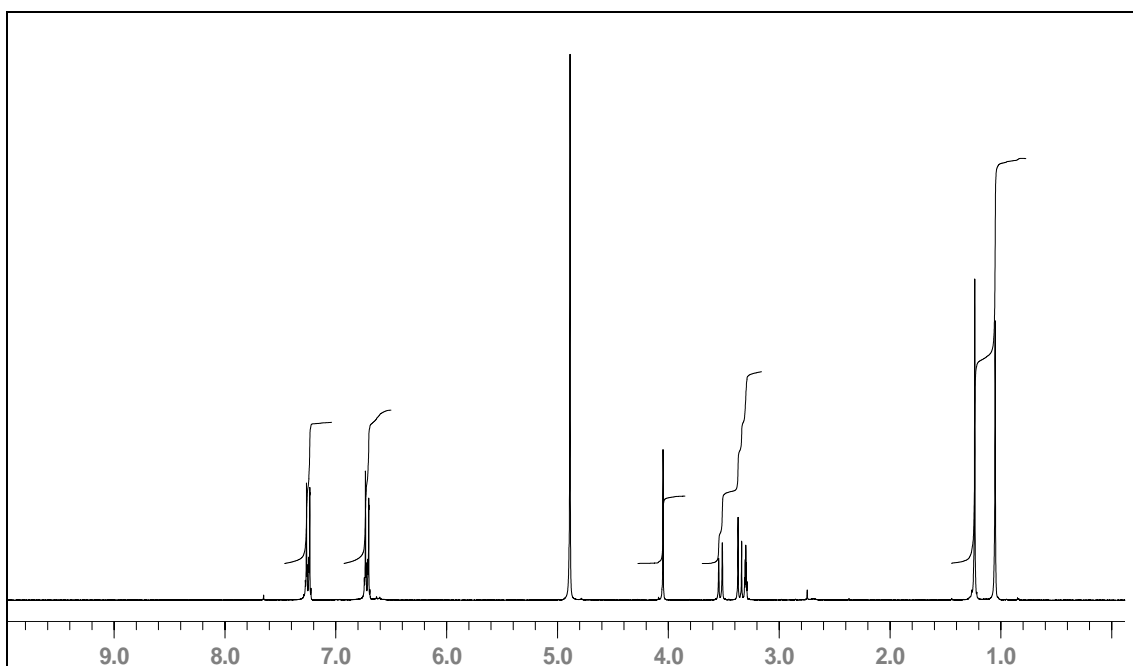
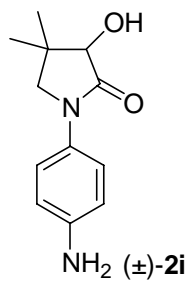


¹³C-RMN (75'4 MHz, CD₃OD).

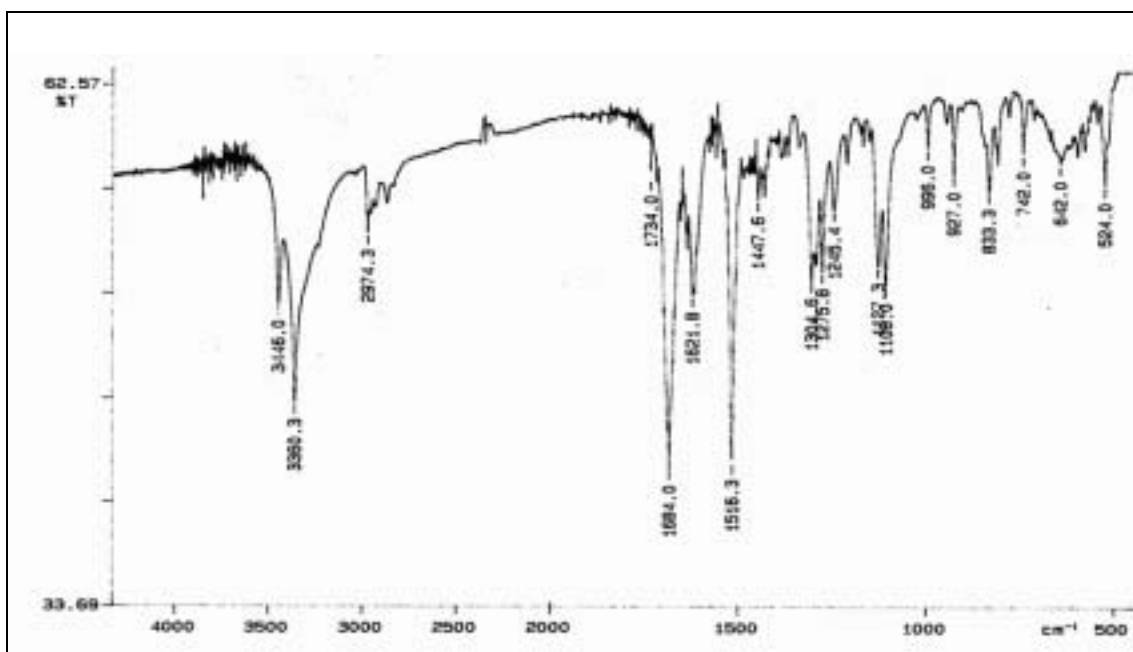


¹³C-RMN (75'4 MHz, CD₃OD), DEPT.

Espectres

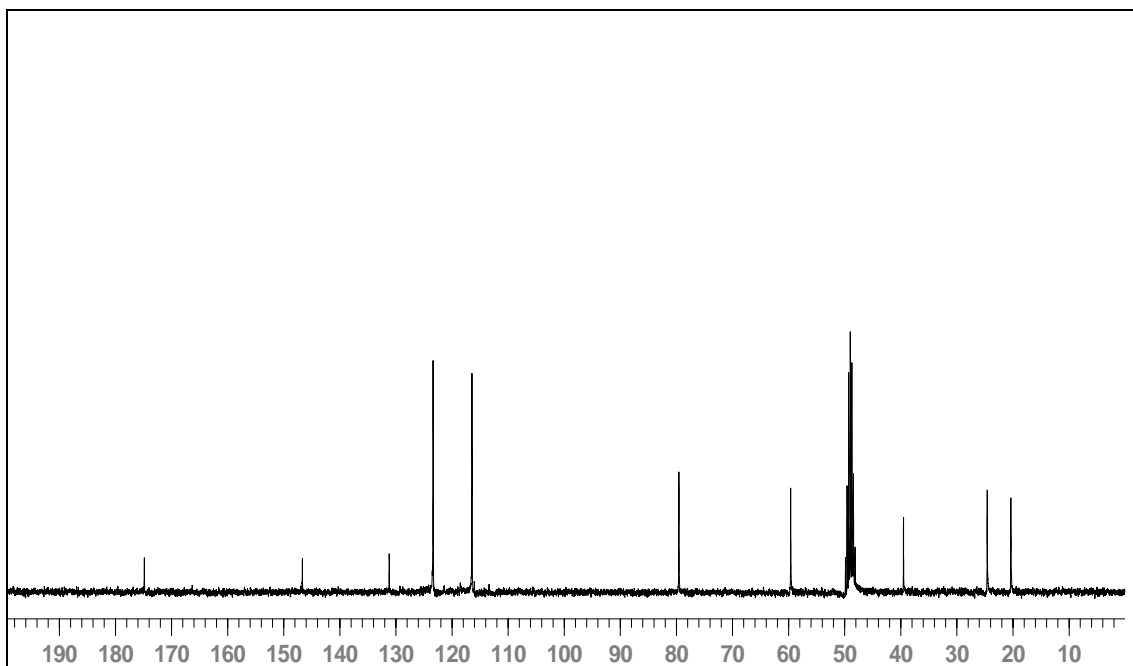
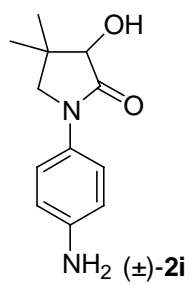


¹H-RMN (300 MHz, CD₃OD).

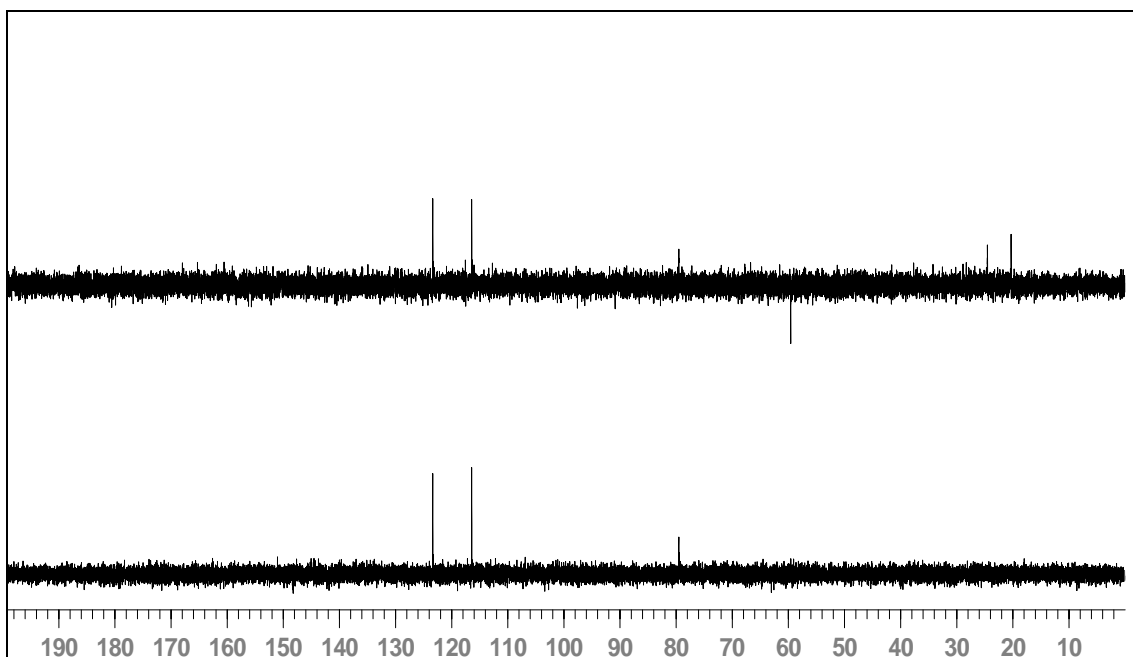


IR (KBr).

Espectres

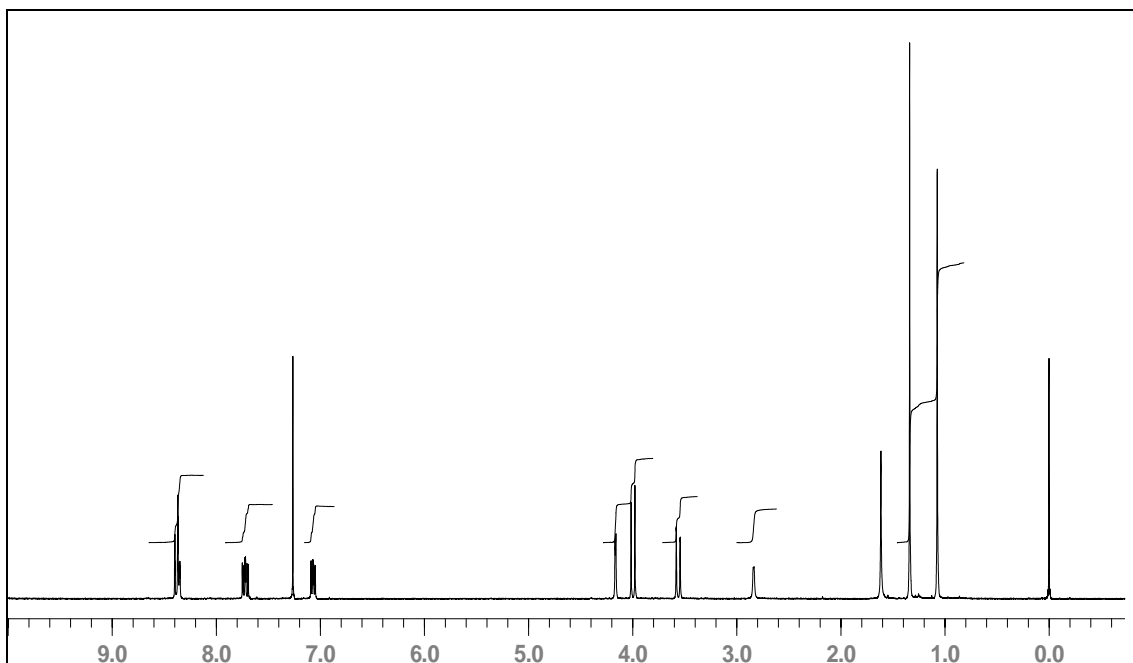
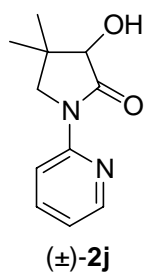


¹³C-RMN (75'4 MHz, CD₃OD).

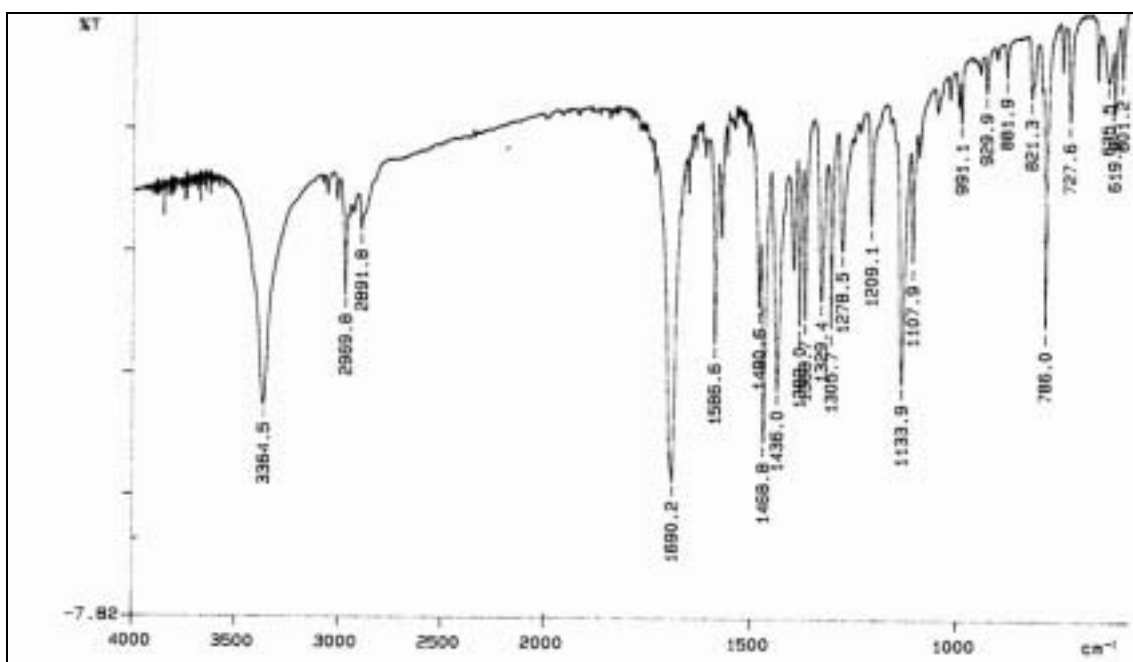


¹³C-RMN (75'4 MHz, CD₃OD), DEPT.

Espectres

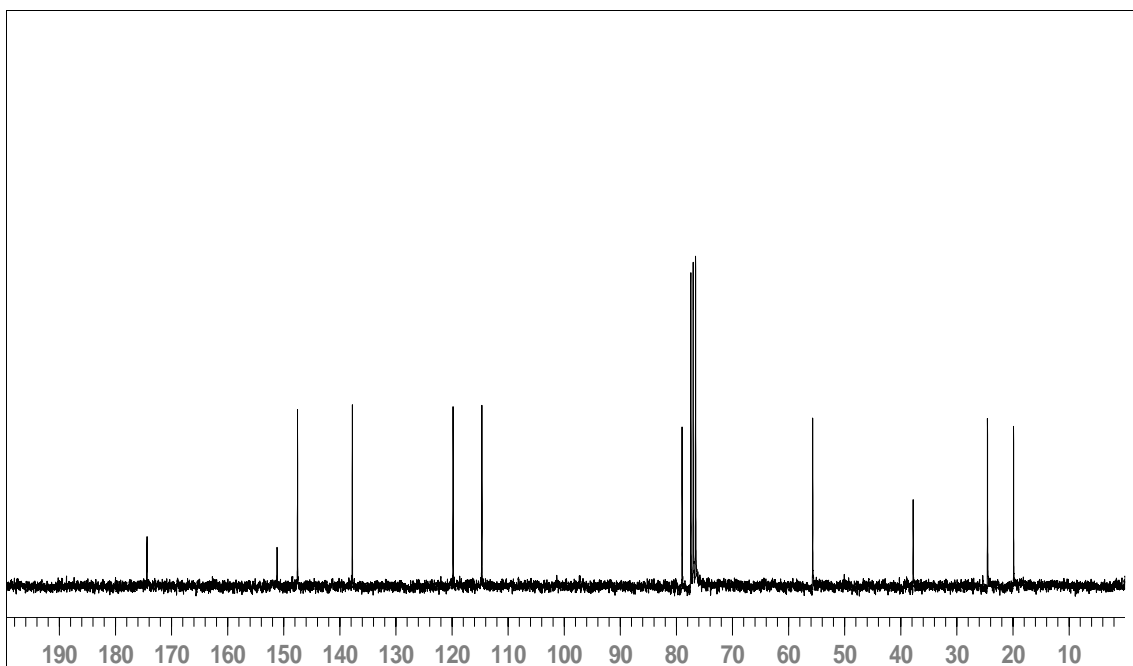
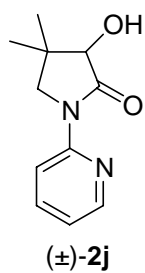


¹H-RMN (300 MHz, CDCl₃).

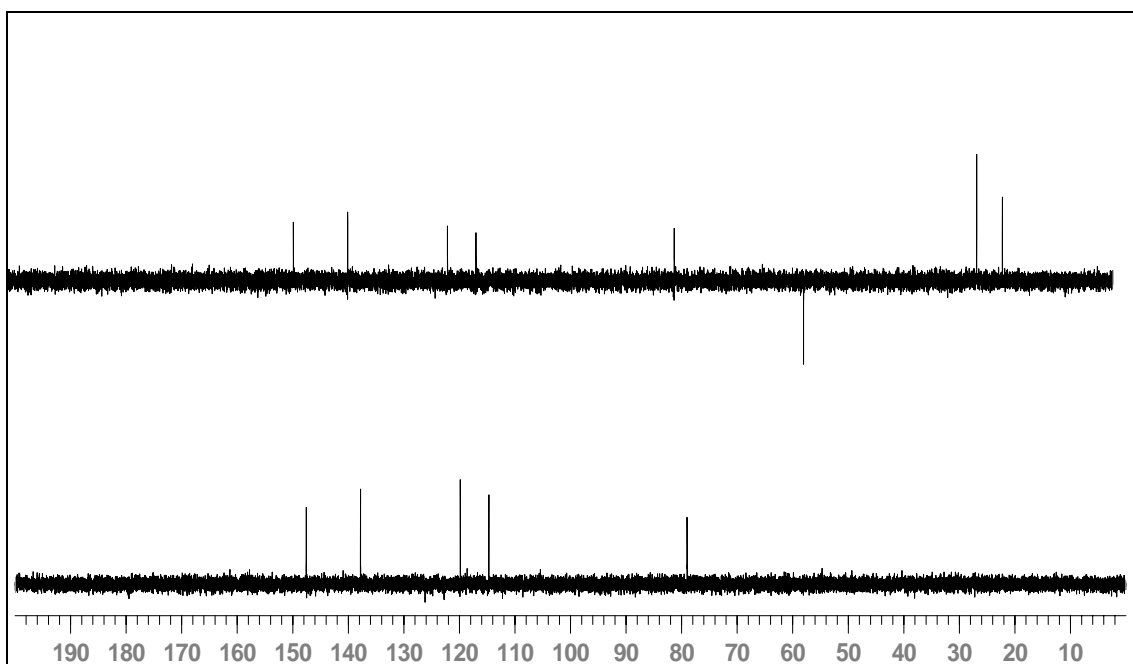


IR (KBr).

Espectres

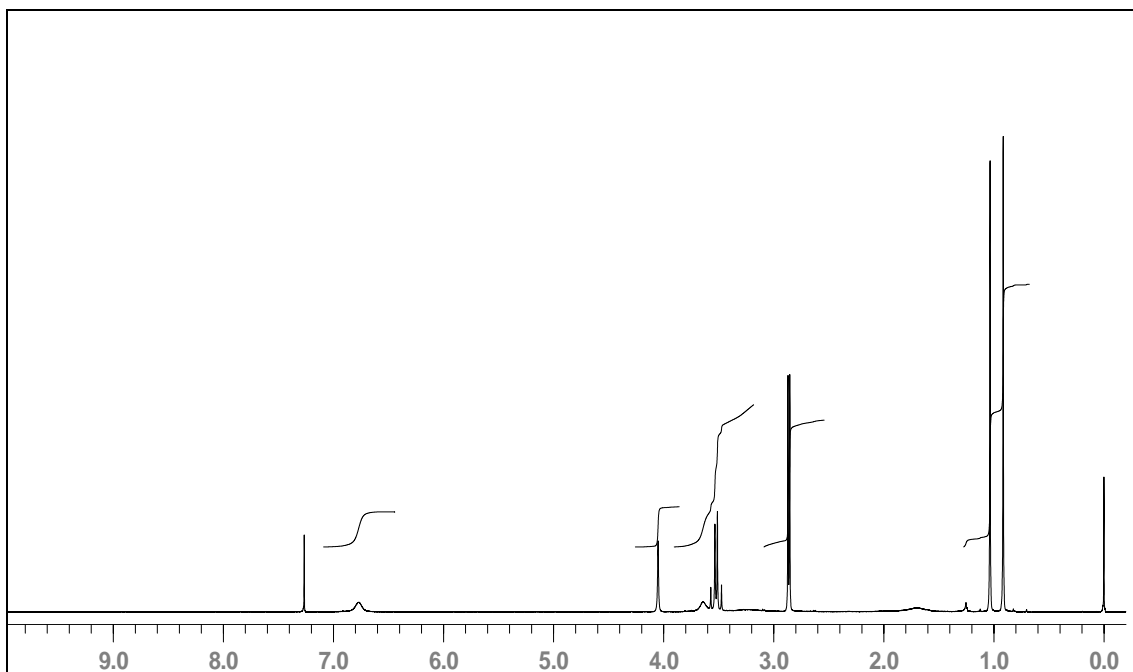
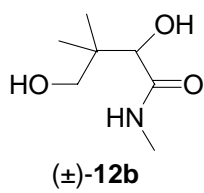


¹³C-RMN (75'4 MHz, CDCl₃).

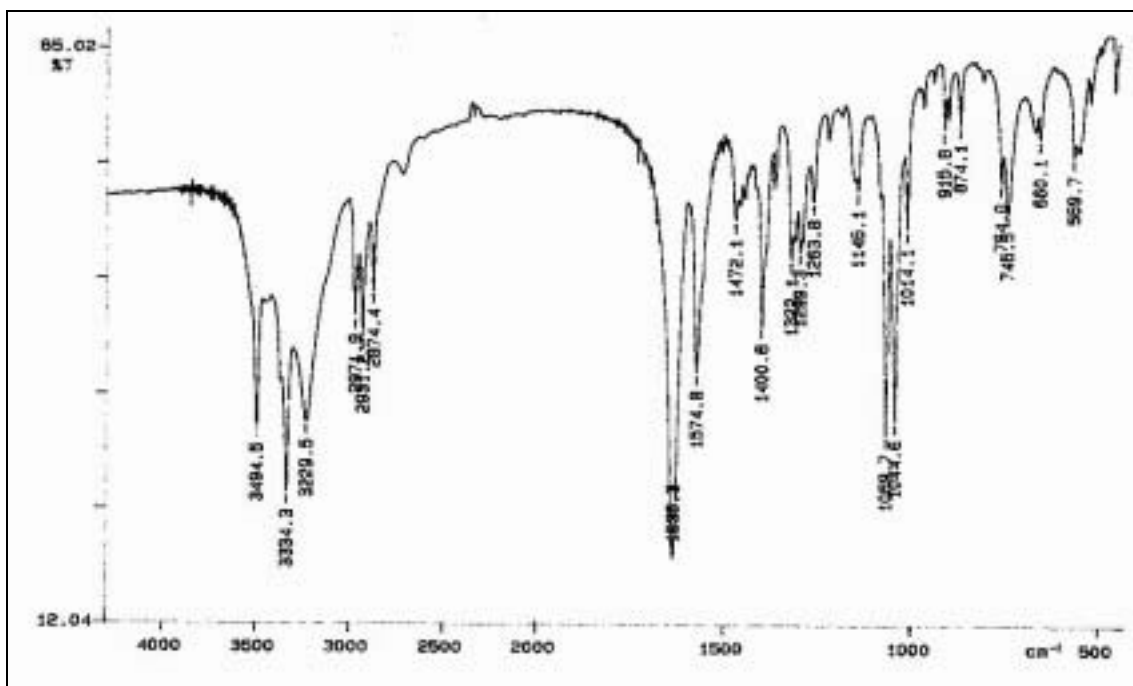


¹³C-RMN (75'4 MHz, CDCl₃), DEPT.

Espectres

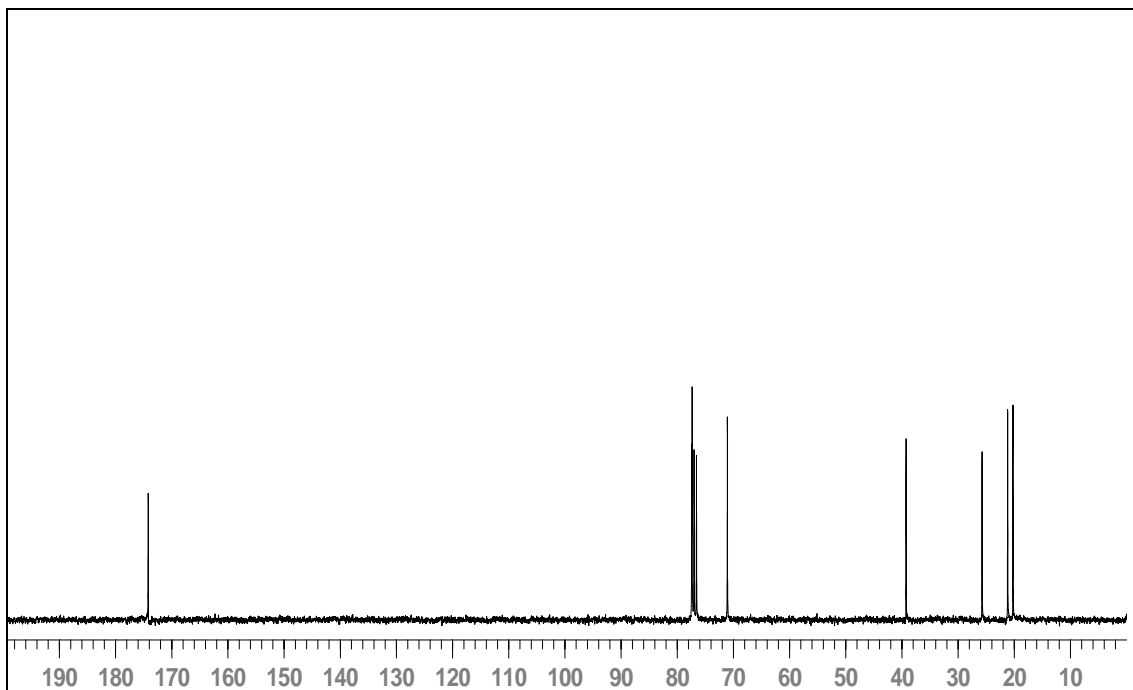
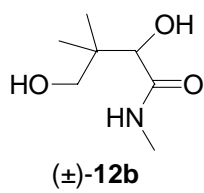


¹H-RMN (300 MHz, CDCl₃).

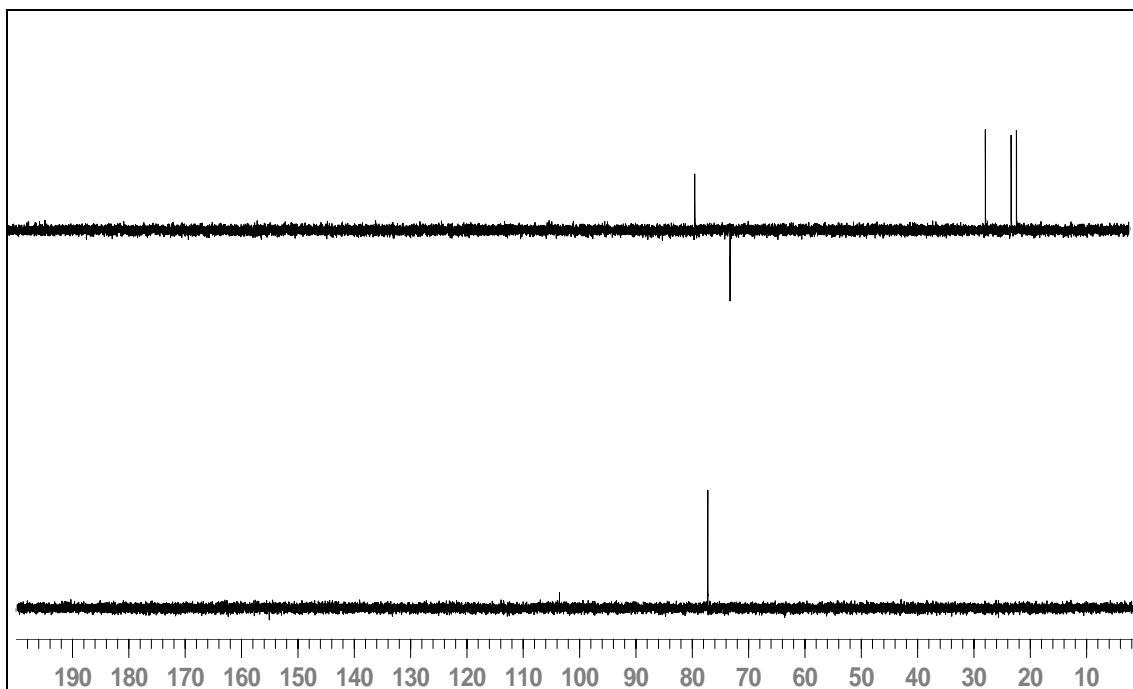


IR (KBr).

Espectres

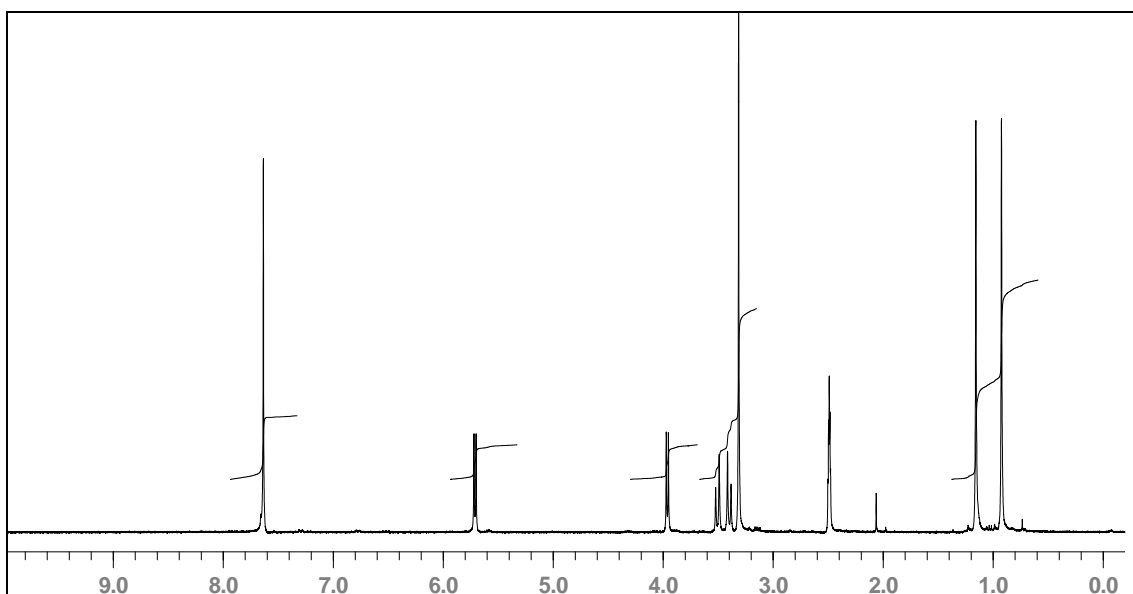
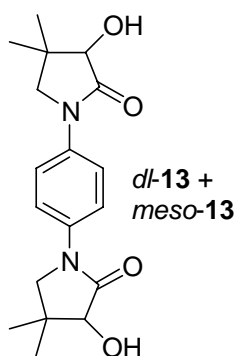


¹³C-RMN (75'4 MHz, CDCl₃).

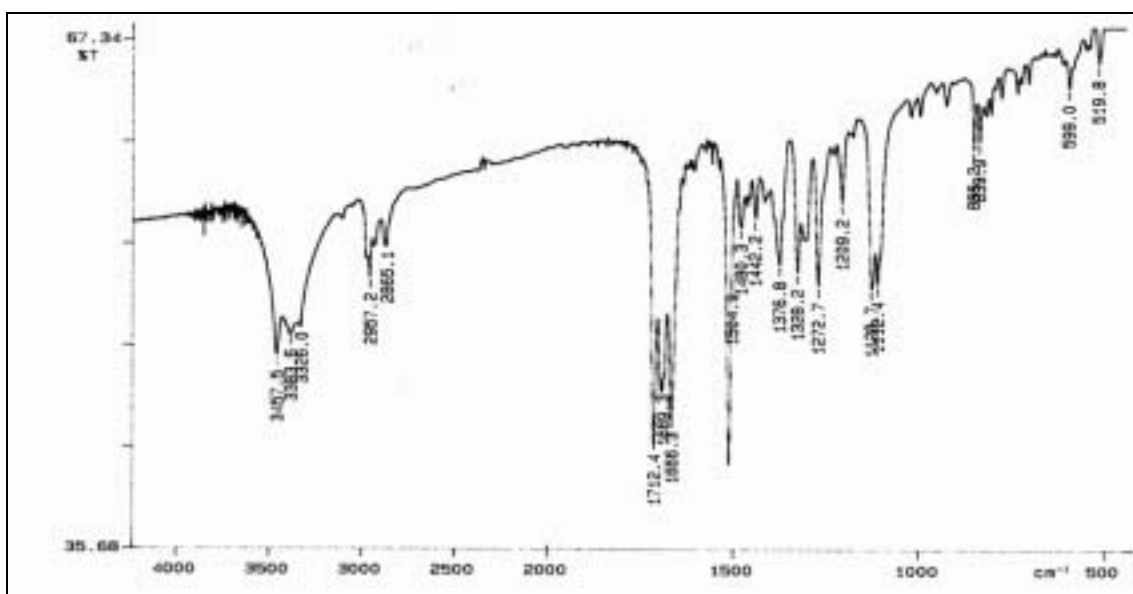


¹³C-RMN (75'4 MHz, CDCl₃), DEPT.

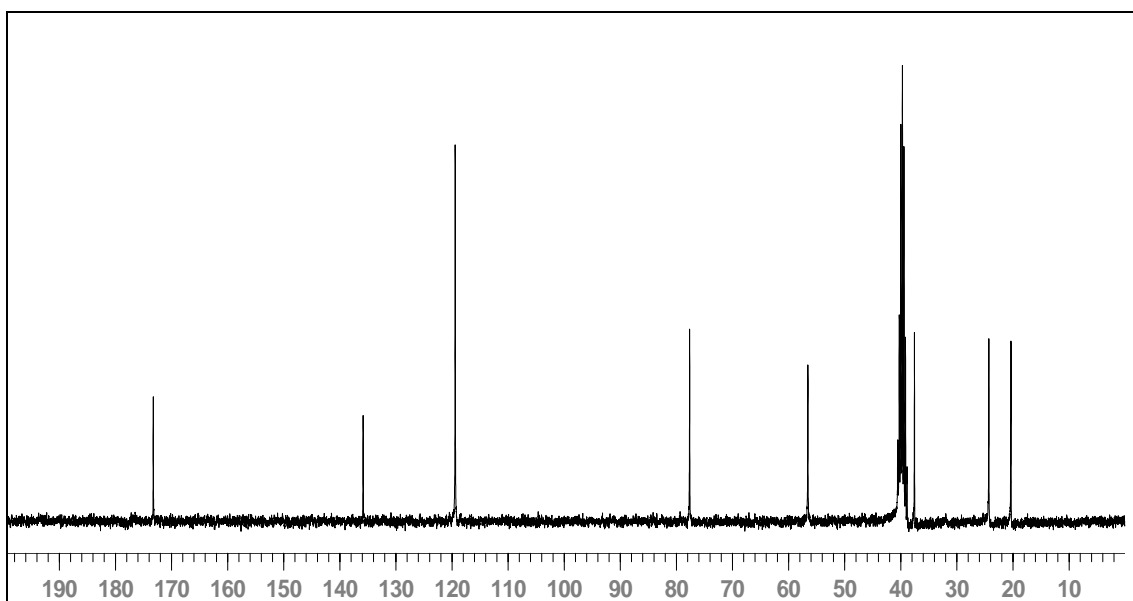
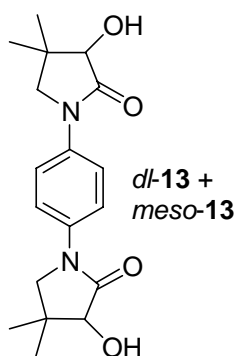
Espectres



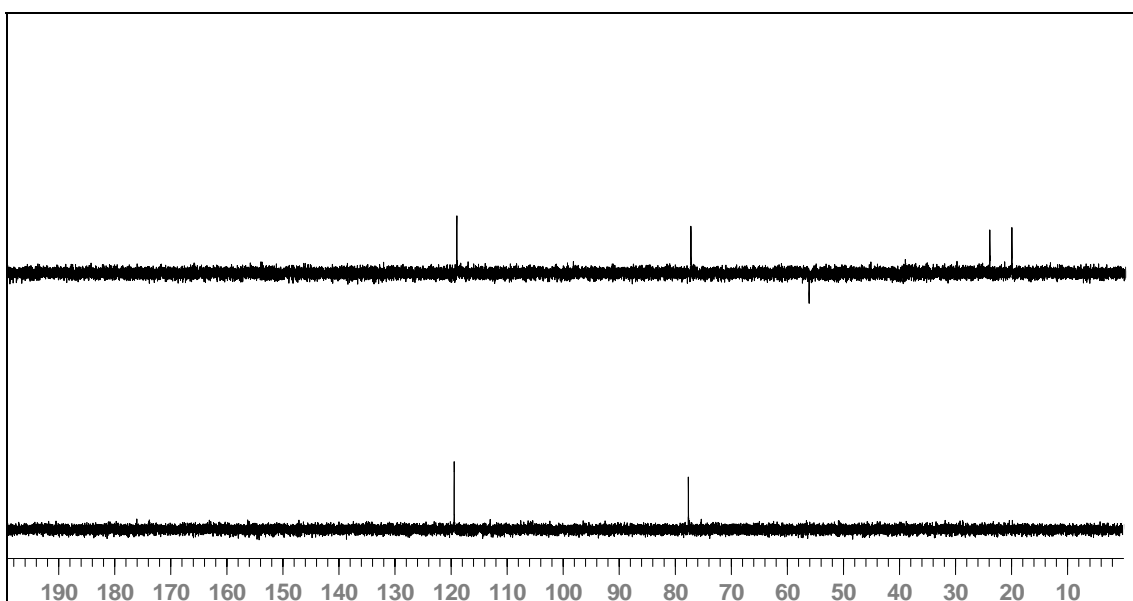
¹H-RMN (300 MHz, DMSO-d₆).



IR (KBr).

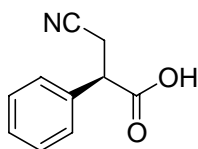


^{13}C -RMN (75'4 MHz, DMSO- d_6).

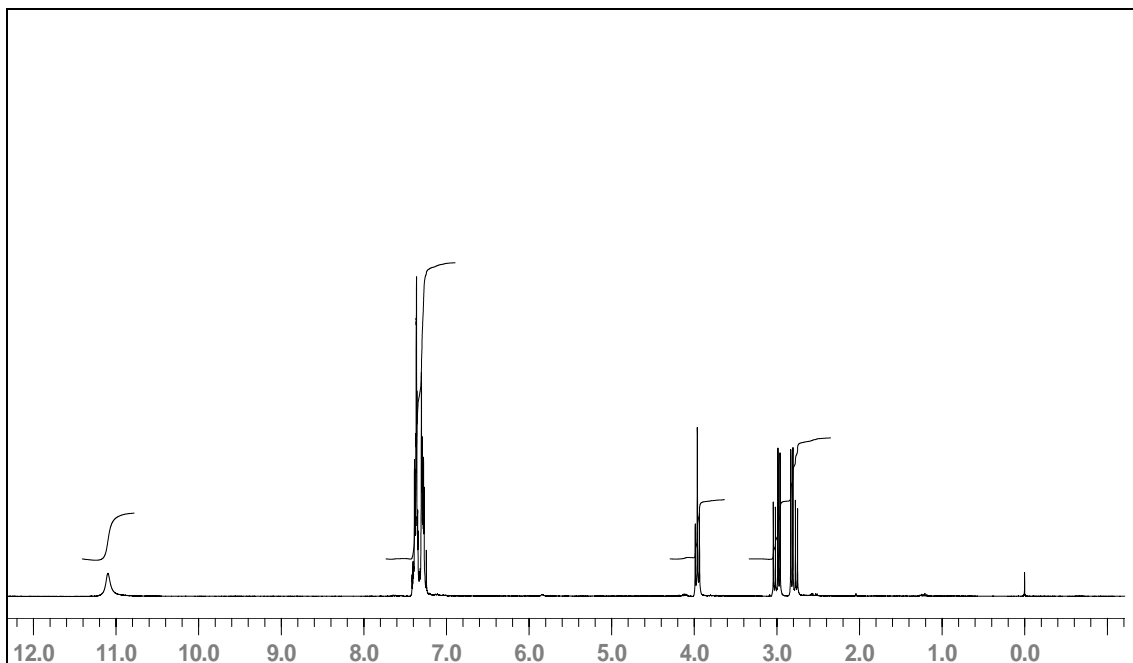


^{13}C -RMN (75'4 MHz, DMSO- d_6), DEPT.

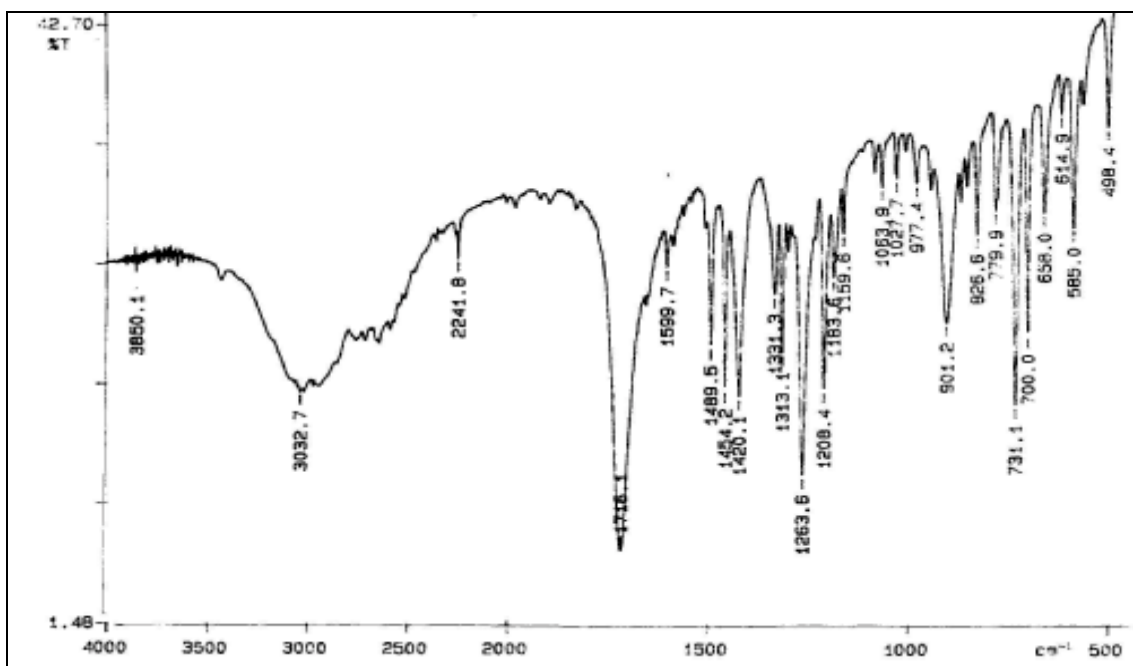
Espectres



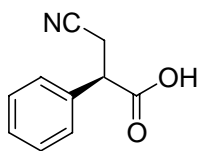
(R)-18



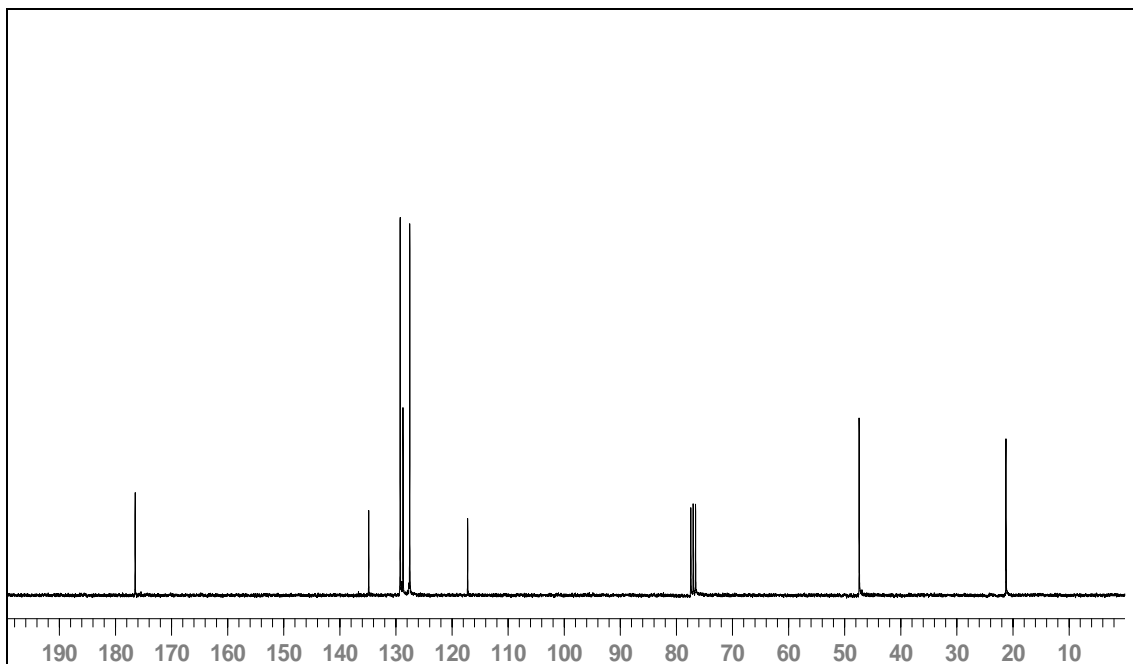
¹H-RMN (300 MHz, CDCl₃).



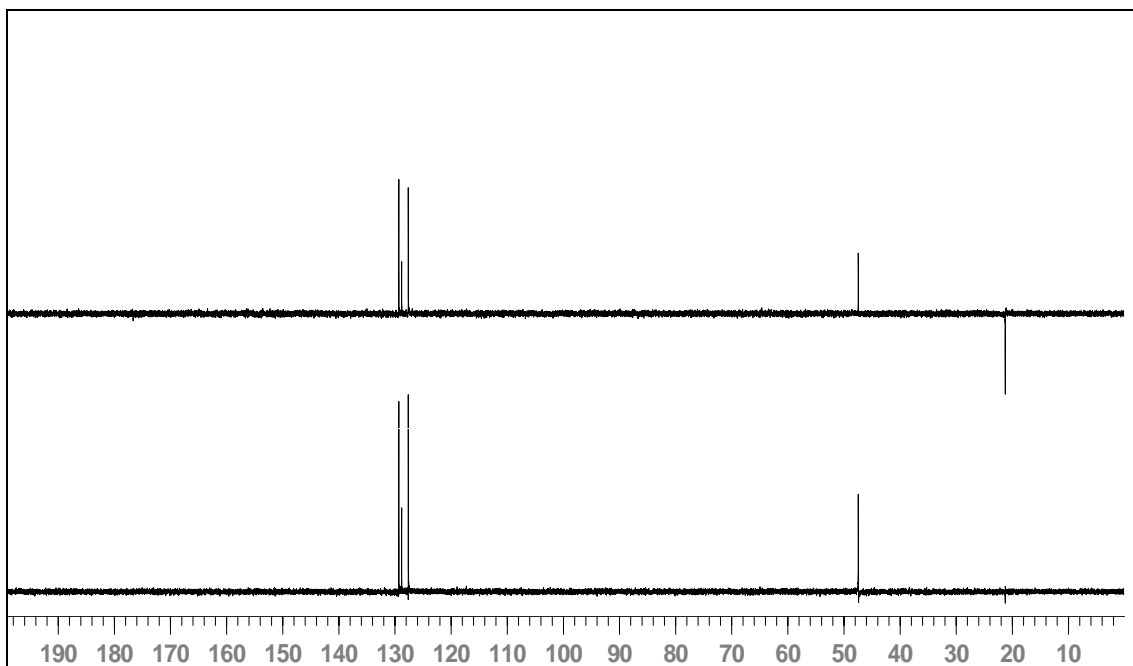
IR (KBr).



(*R*)-18

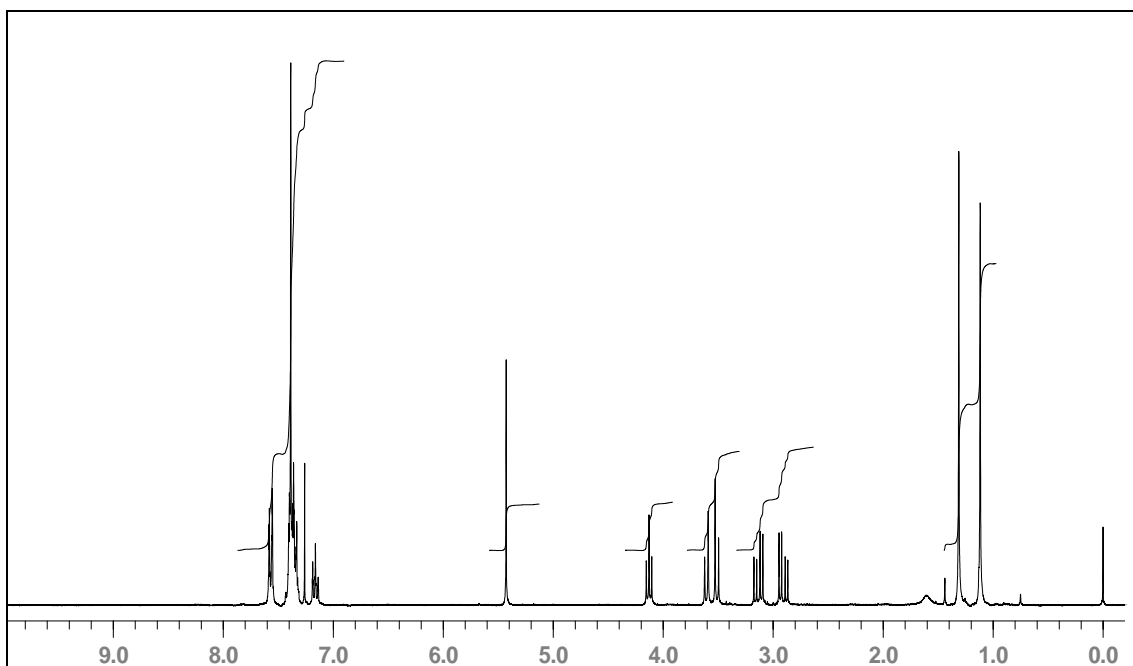
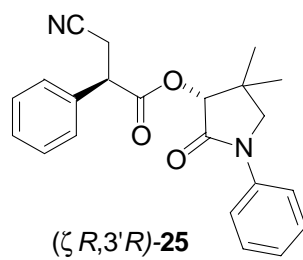


^{13}C -RMN (75'4 MHz, CDCl_3).

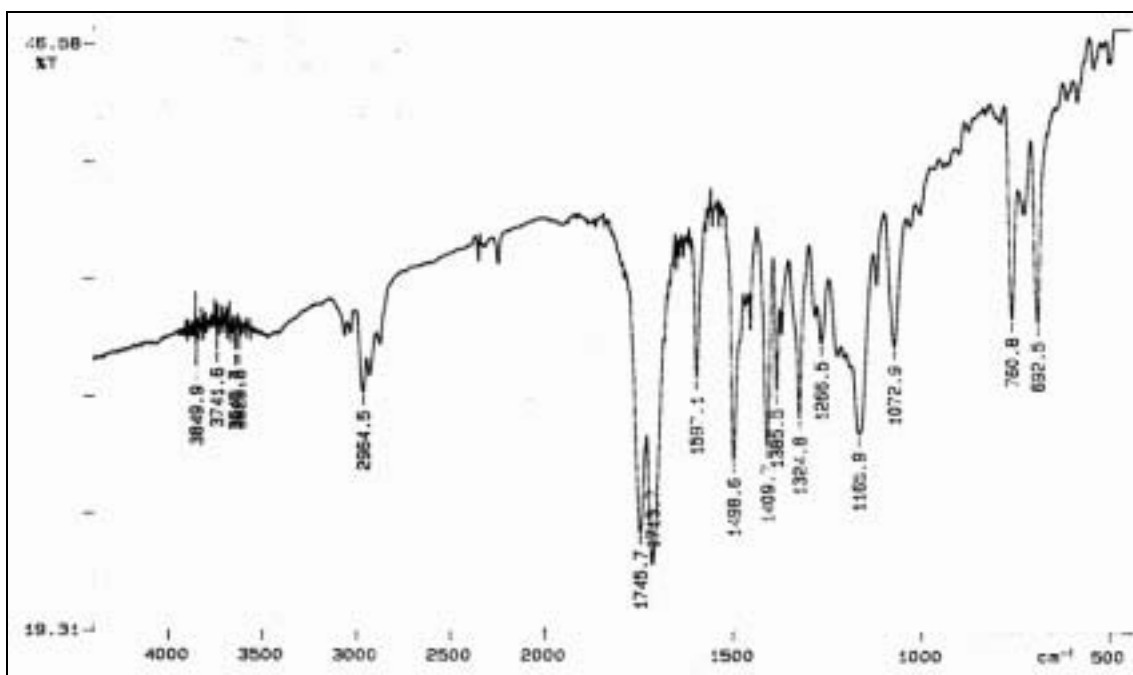


^{13}C -RMN (75'4 MHz, CDCl_3), DEPT.

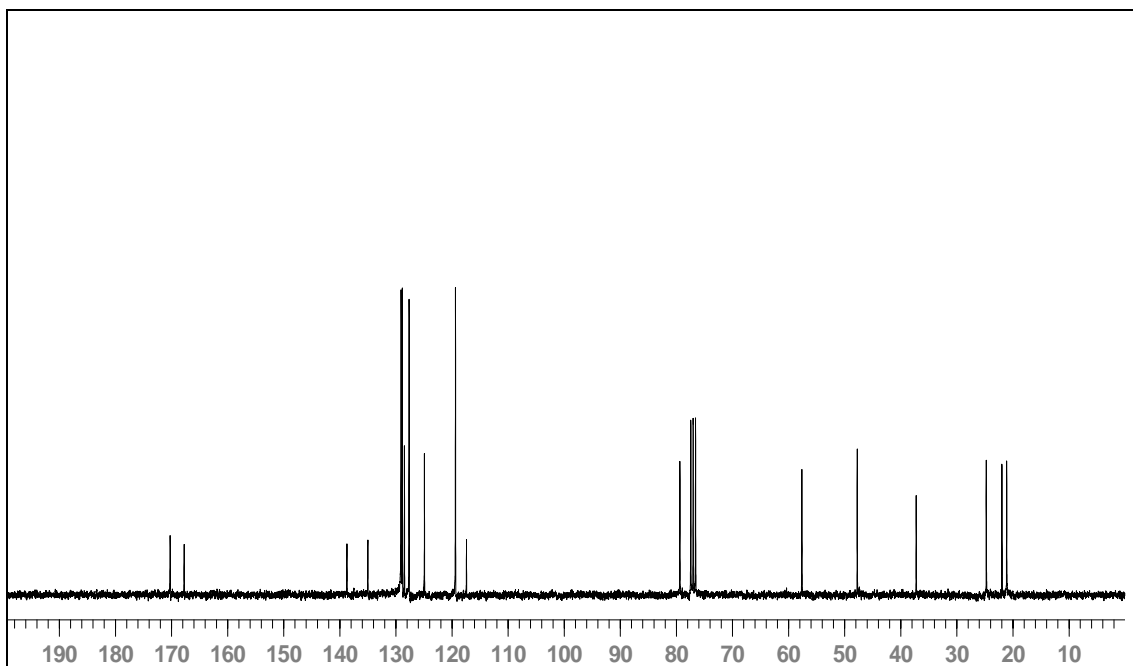
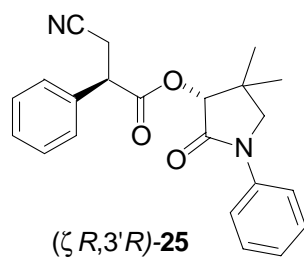
Espectres



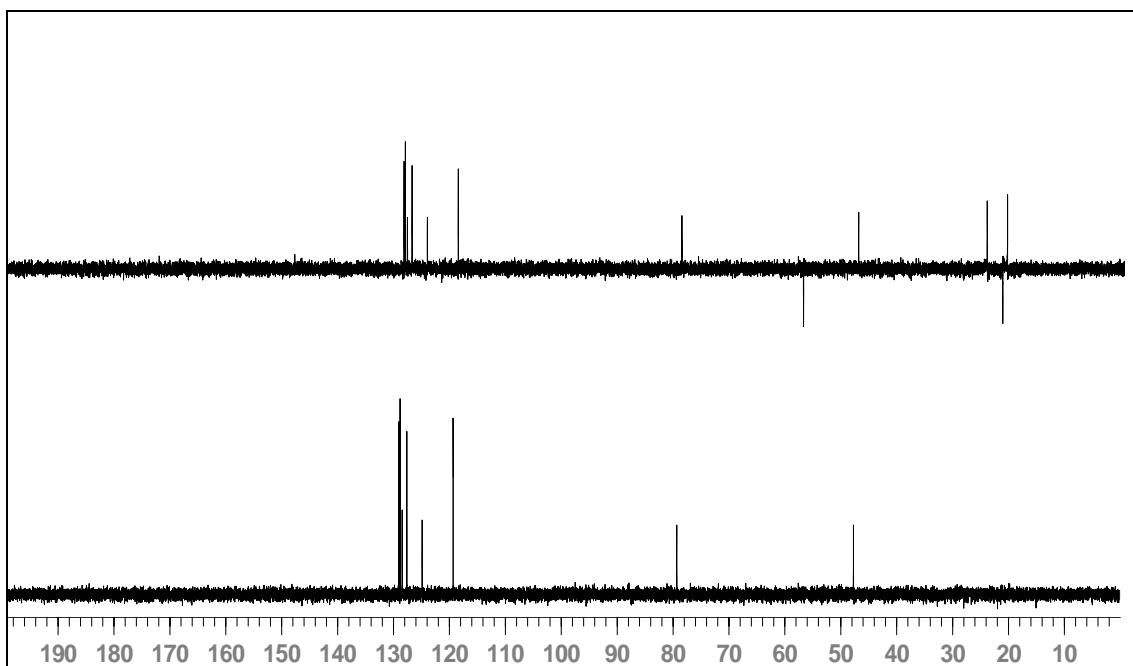
$^1\text{H-NMR}$ (300 MHz, CDCl_3).



IR (NaCl).

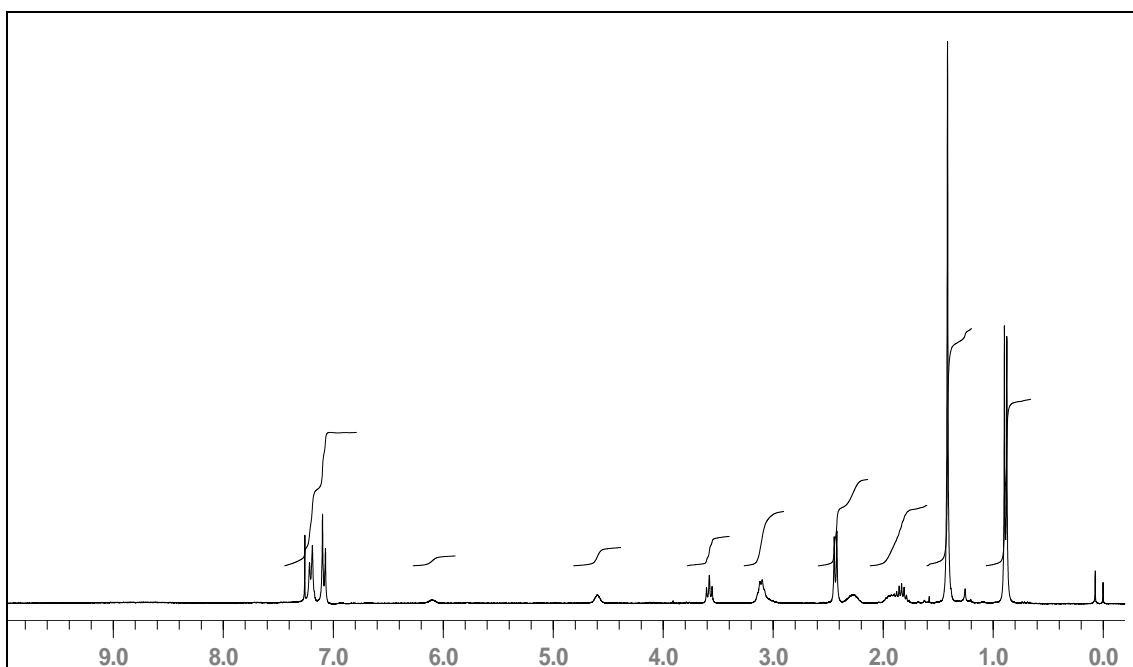
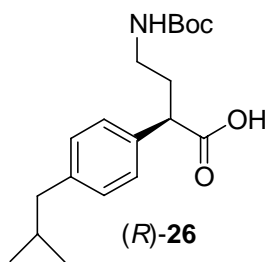


^{13}C -RMN (75'4 MHz, CDCl_3).

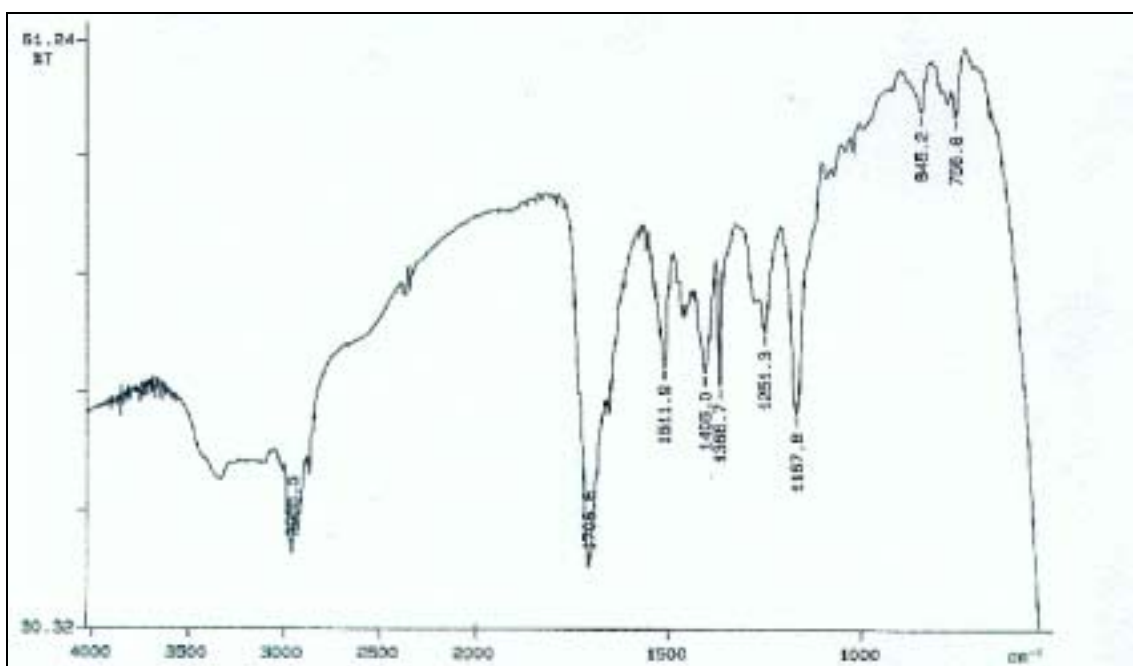


^{13}C -RMN (75'4 MHz, CDCl_3), DEPT.

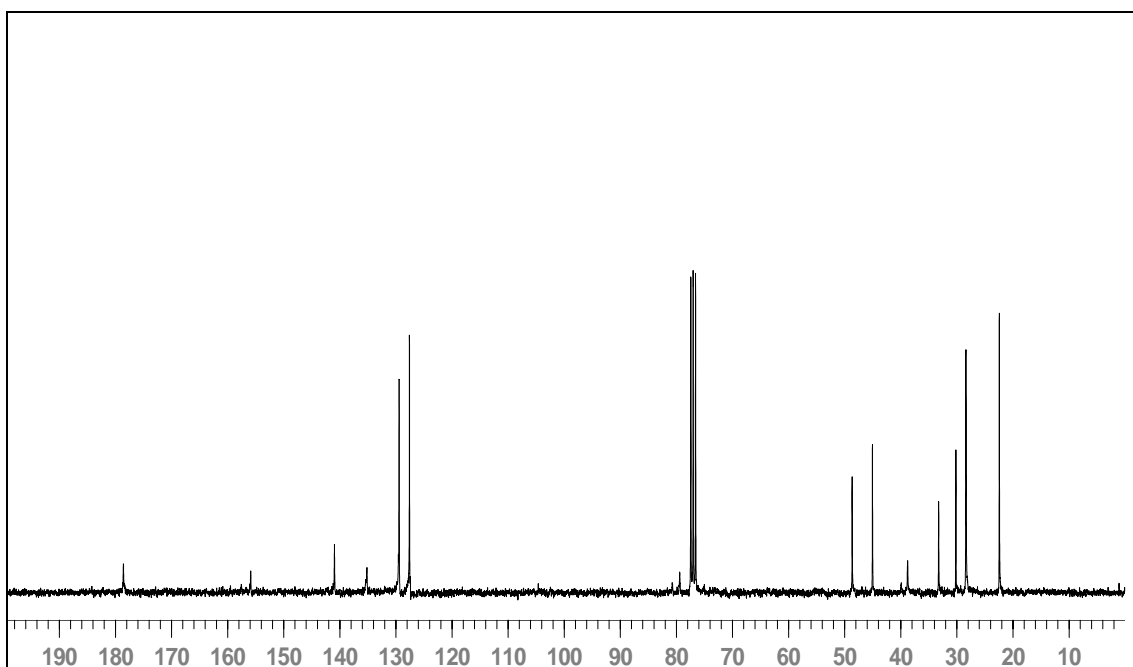
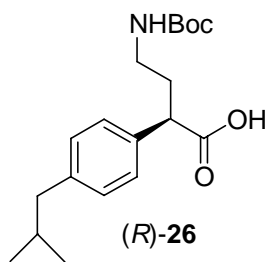
Espectres



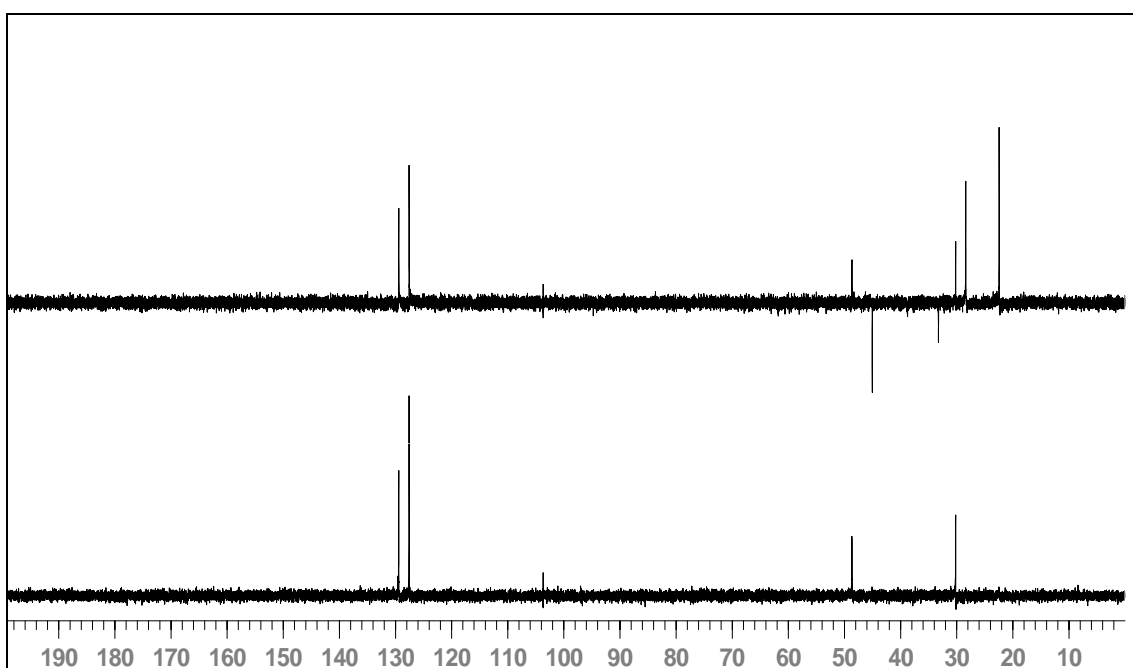
$^1\text{H-NMR}$ (300 MHz, CDCl_3).



IR (KBr).

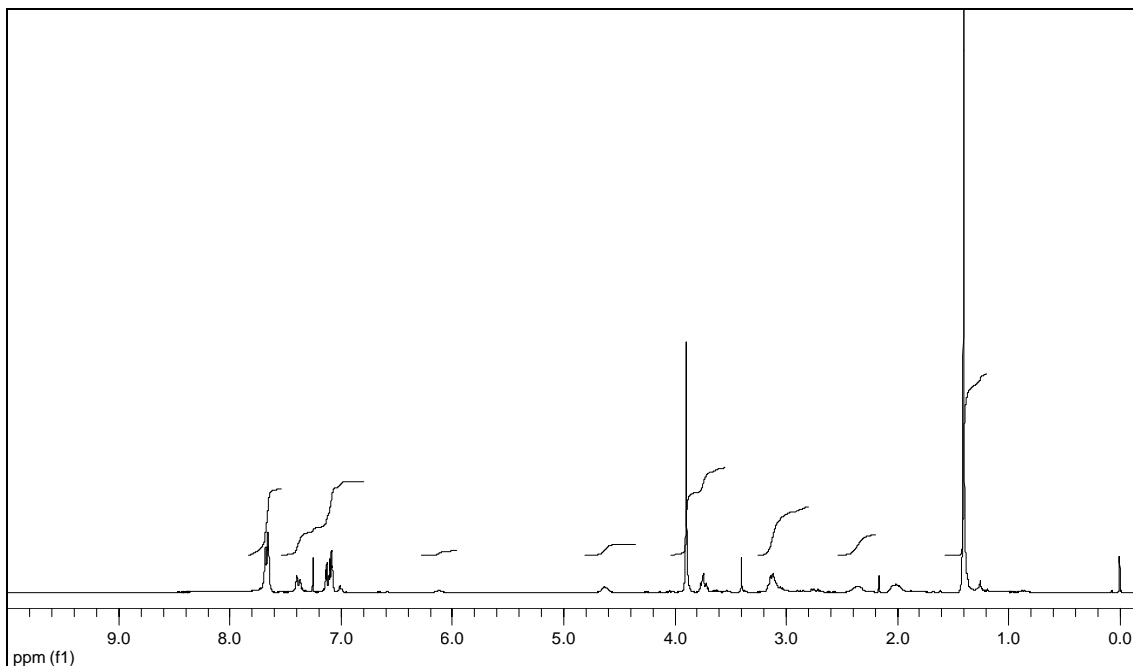
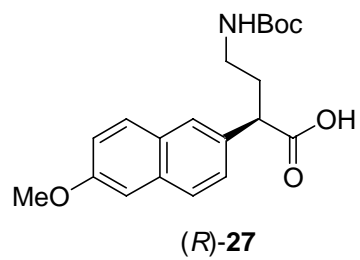


^{13}C -RMN (75.4 MHz, CDCl_3).

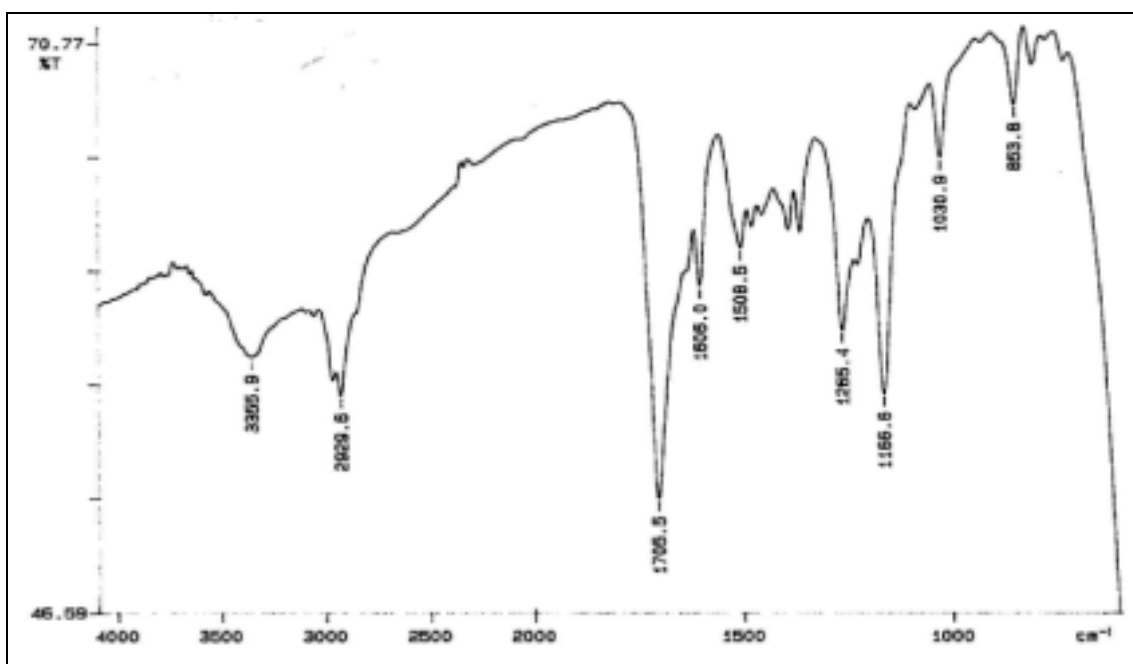


^{13}C -RMN (75.4 MHz, CDCl_3), DEPT.

Espectres

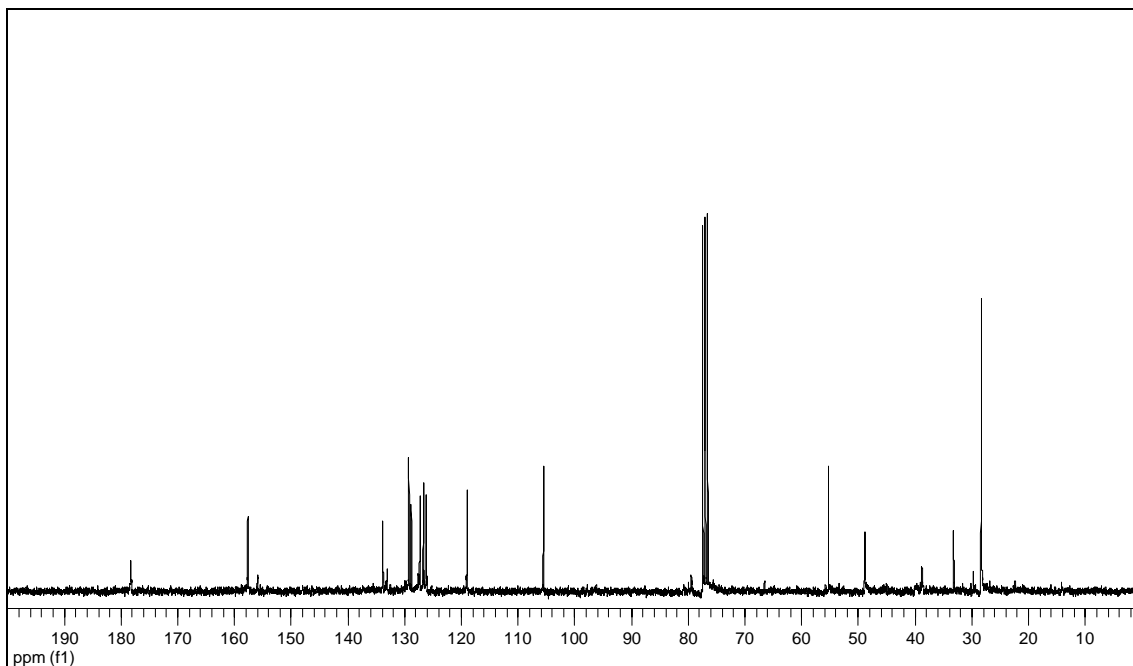
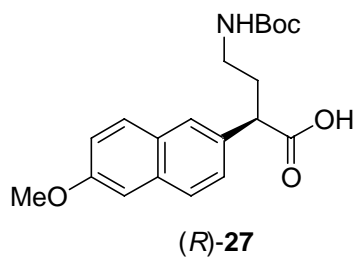


¹H-RMN (300 MHz, CDCl₃).

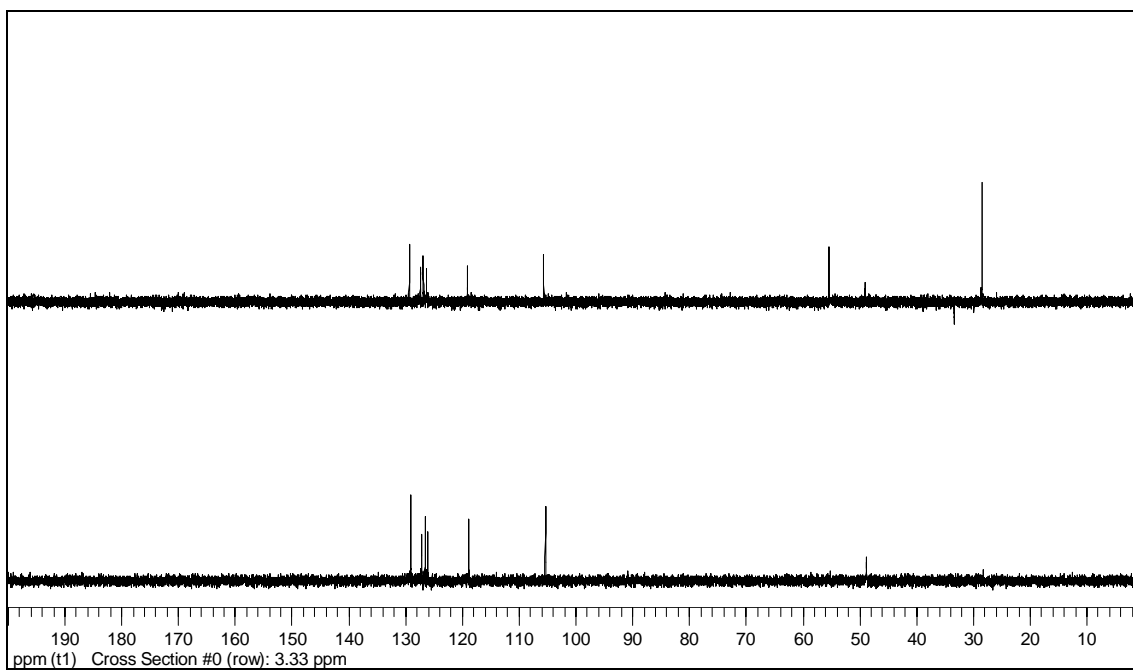


IR (KBr).

Espectres

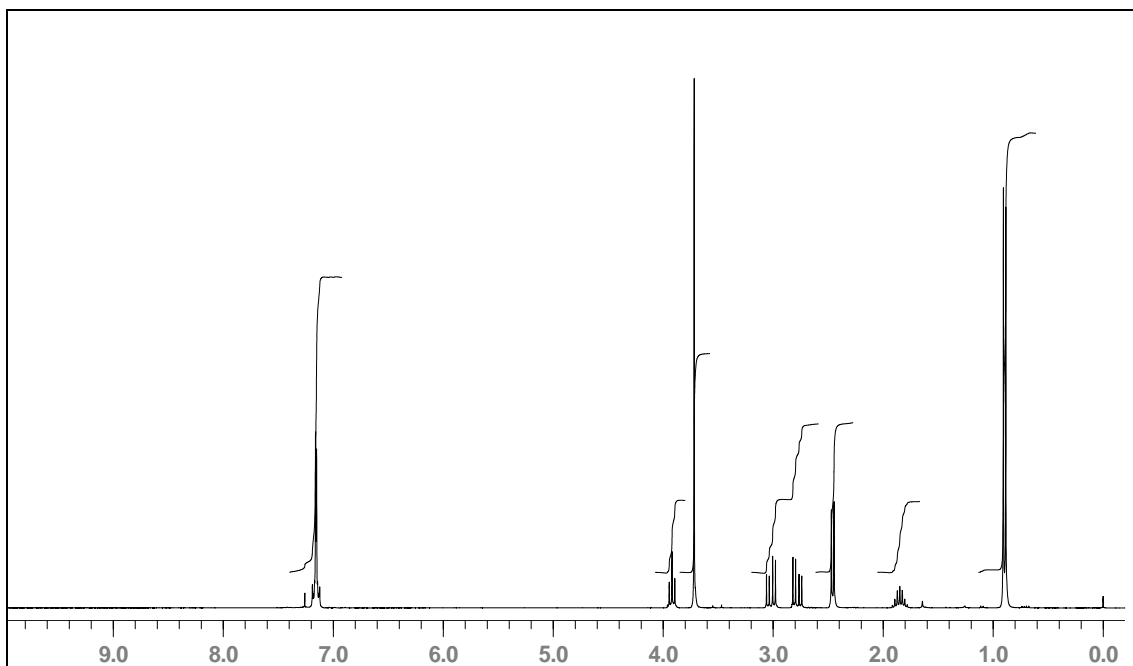
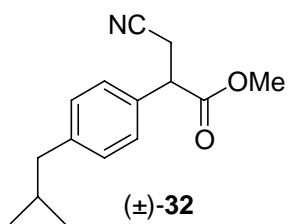


¹³C-RMN (75.4 MHz, CDCl₃).

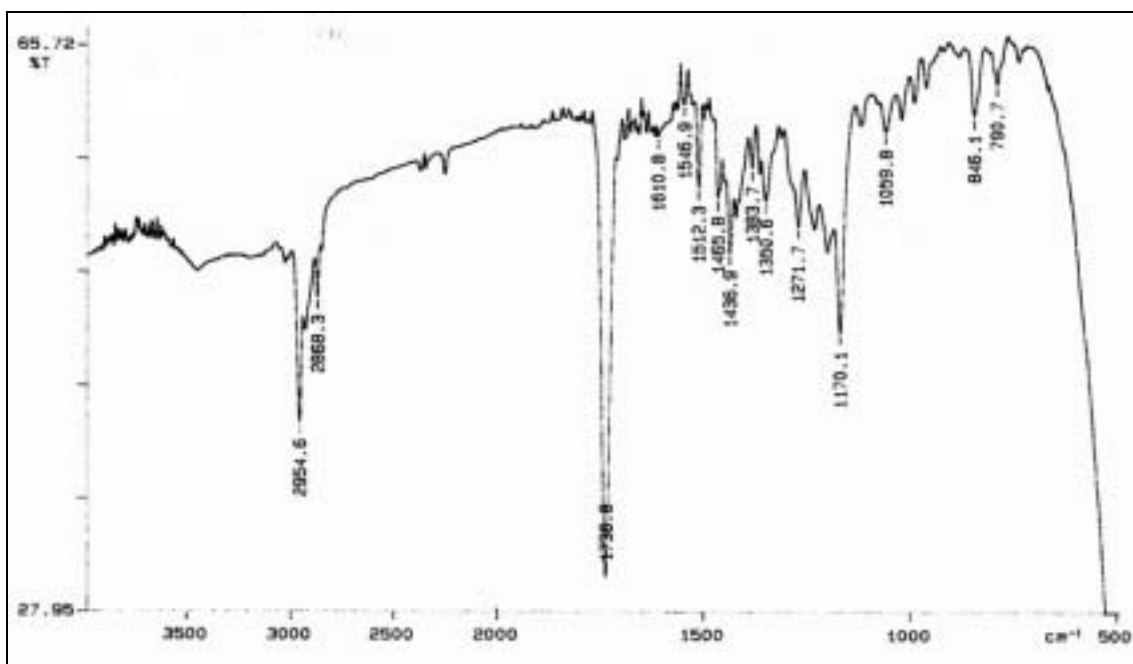


¹³C-RMN (75.4 MHz, CD₃OD), DEPT.

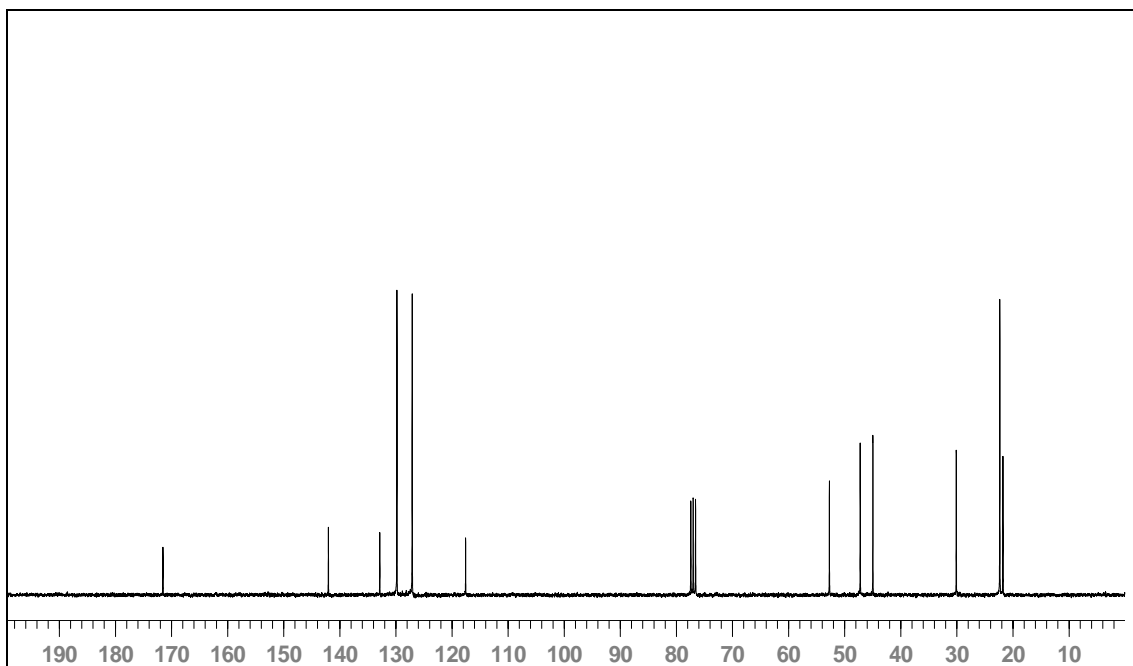
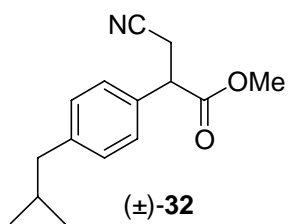
Espectres



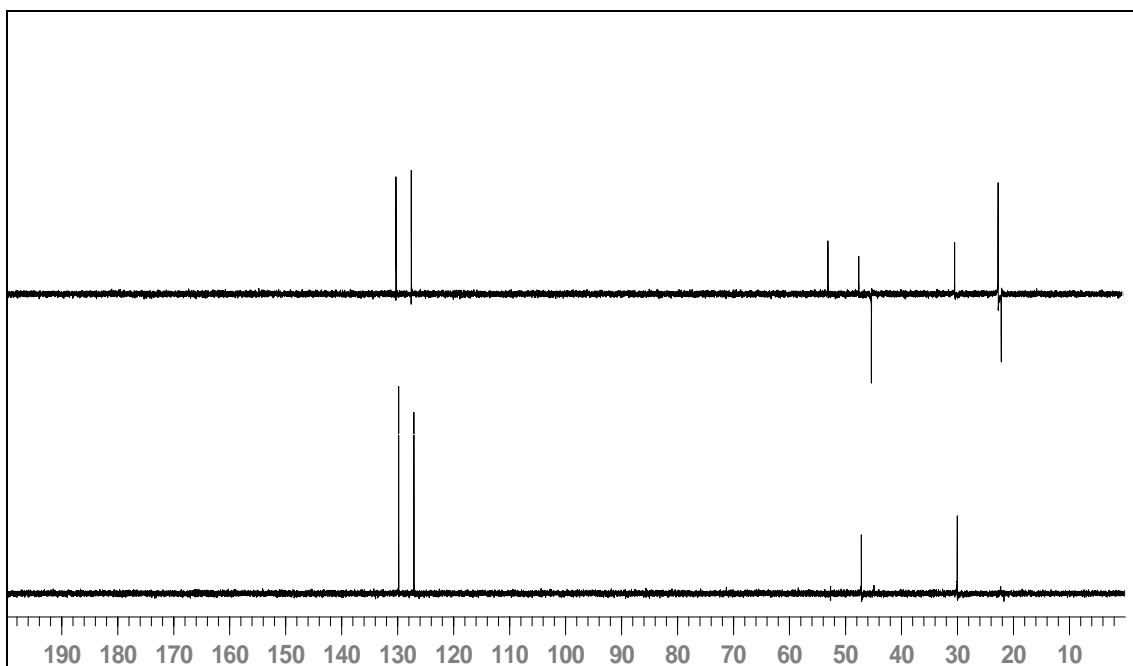
$^1\text{H-RMN}$ (300 MHz, CDCl_3).



IR (NaCl).

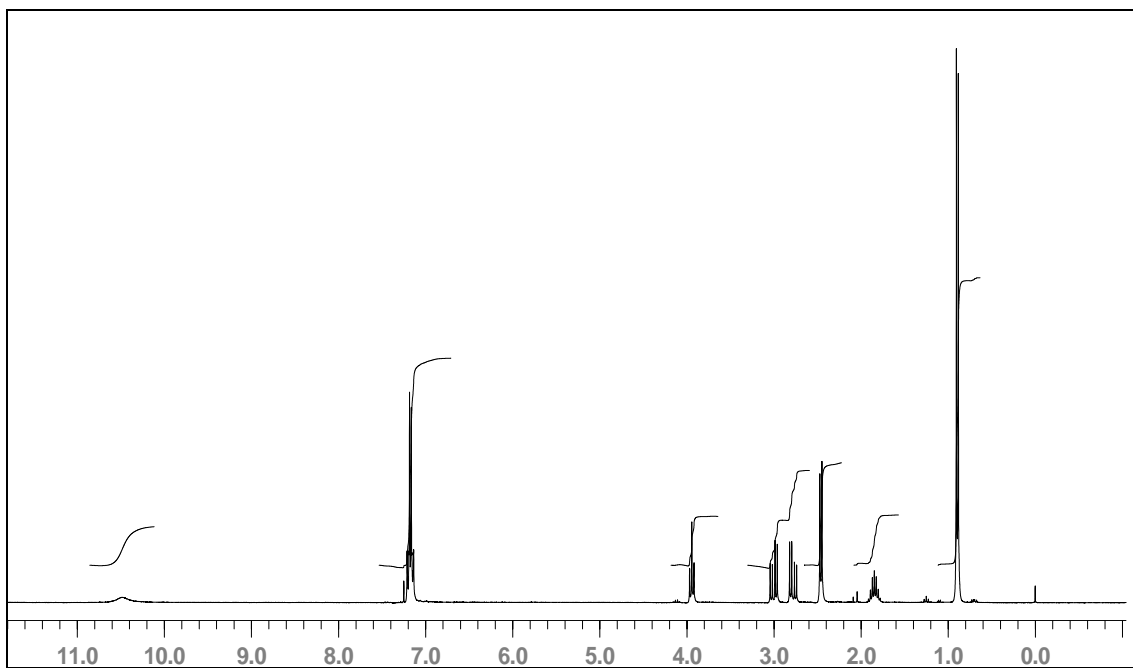
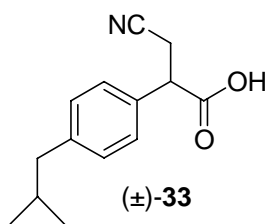


^{13}C -RMN (75'4 MHz, CDCl_3).

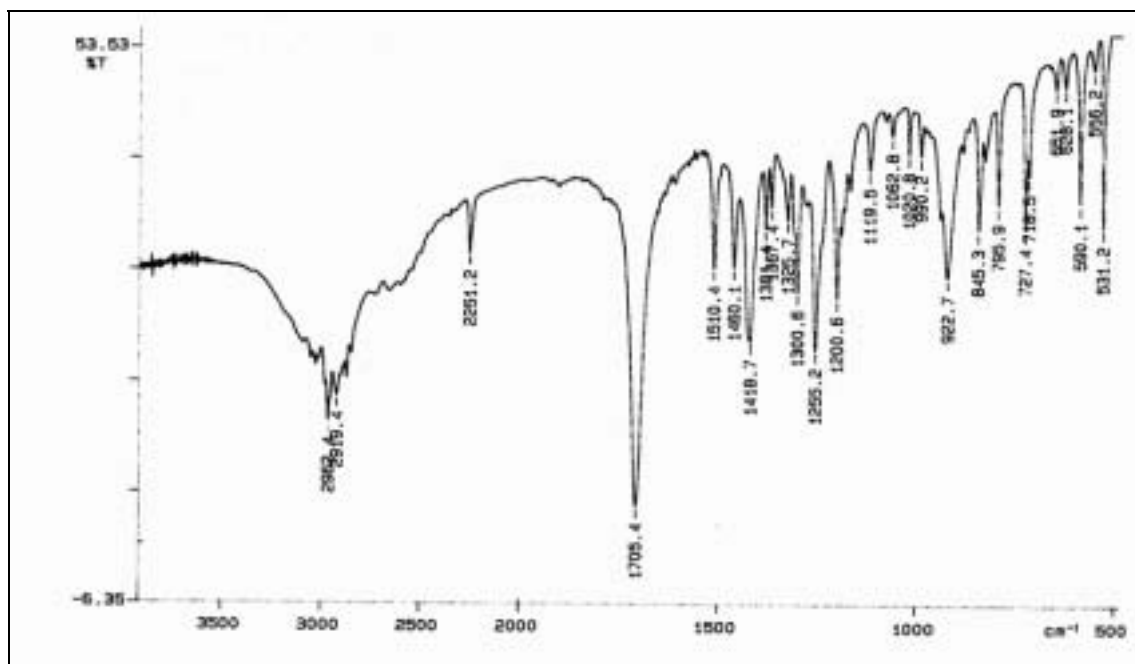


^{13}C -RMN (75'4 MHz, CDCl_3), DEPT.

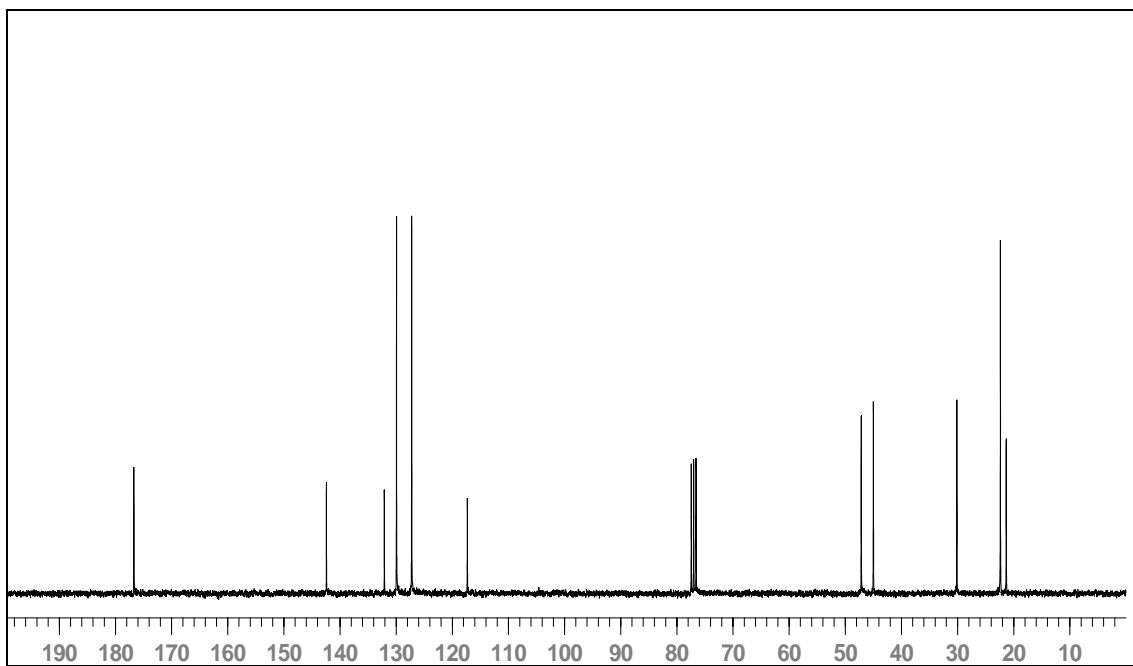
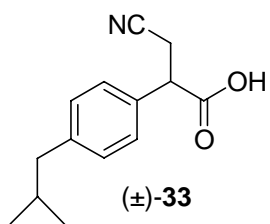
Espectres



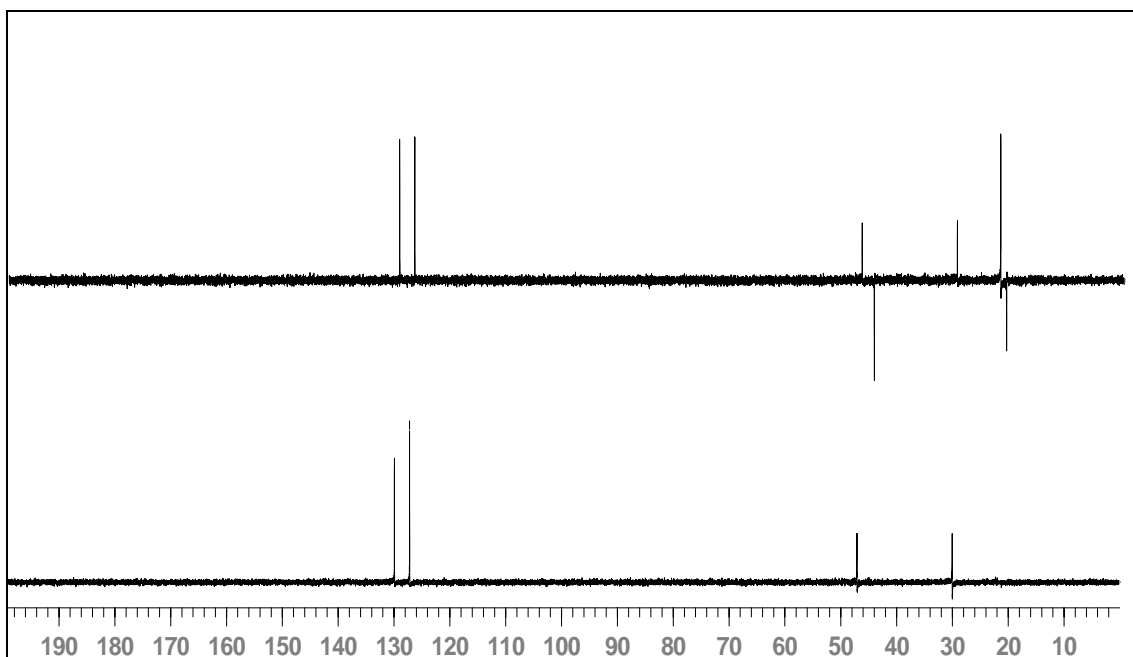
¹H-RMN (300 MHz, CDCl₃).



IR (KBr).

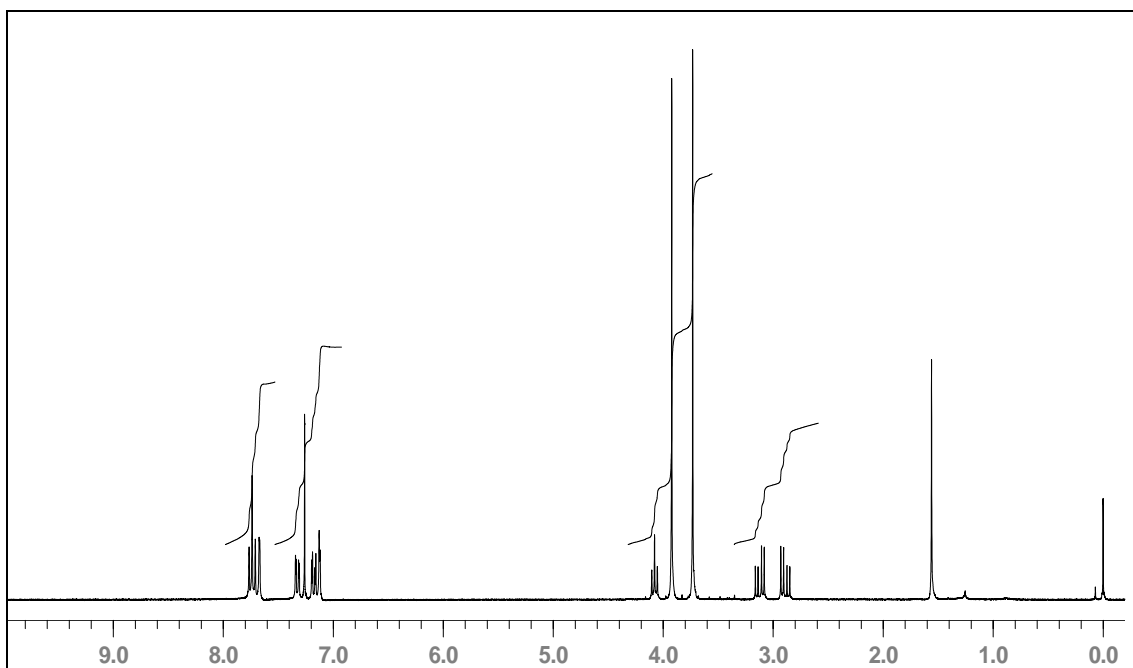
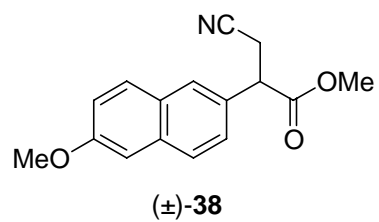


^{13}C -RMN (75'4 MHz, CDCl_3).

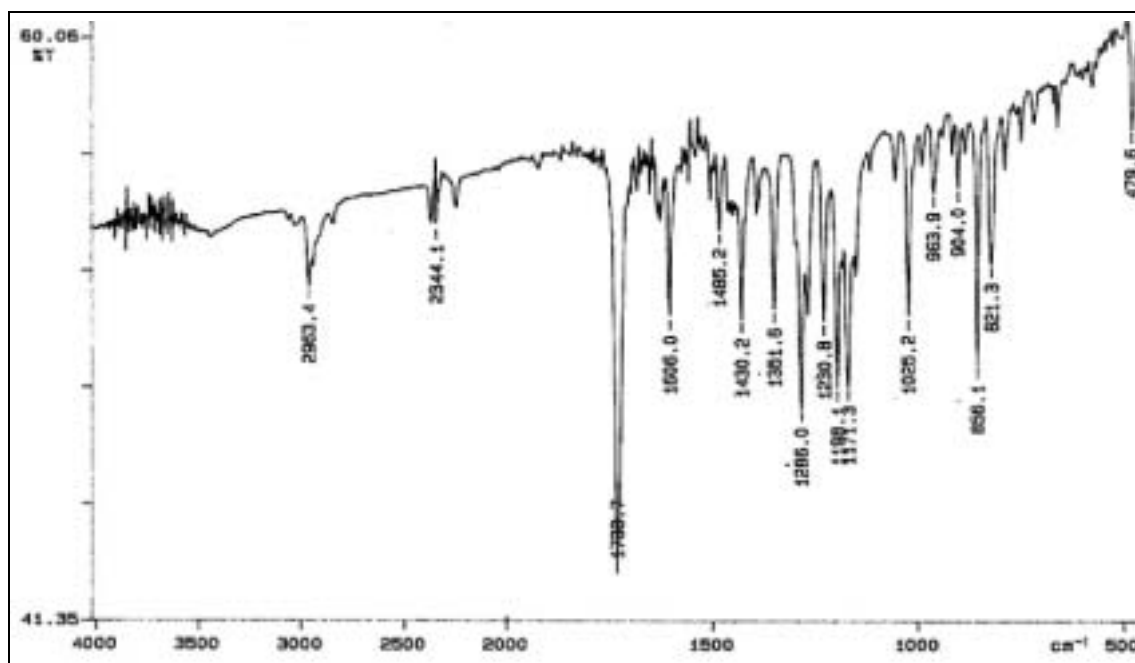


^{13}C -RMN (75'4 MHz, CDCl_3), DEPT.

Espectres

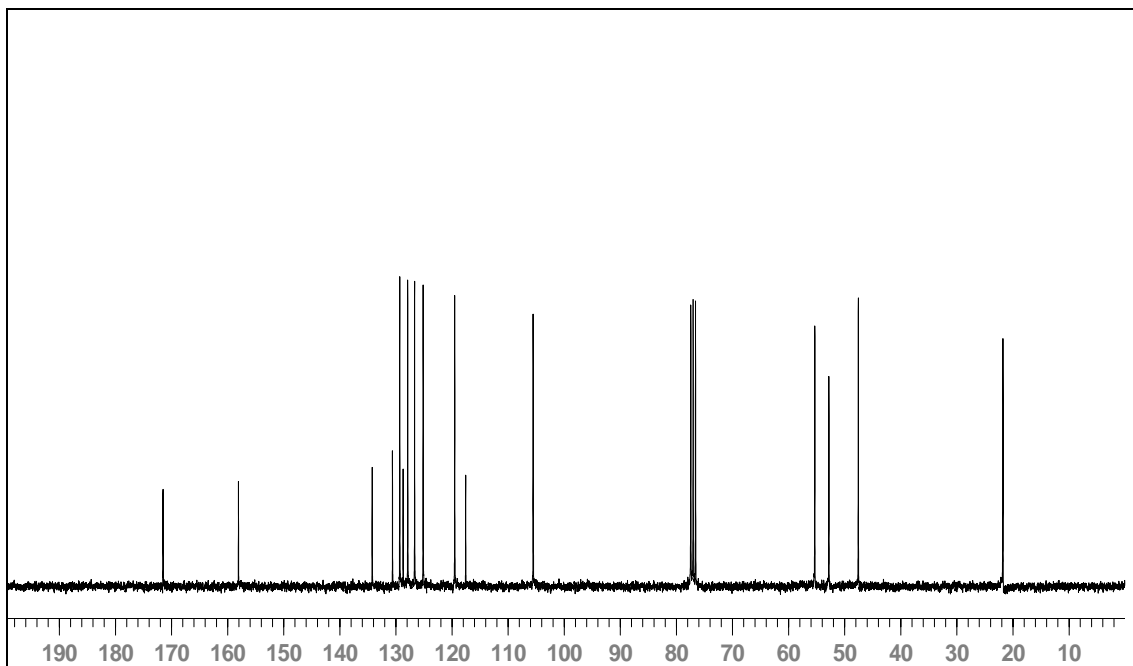
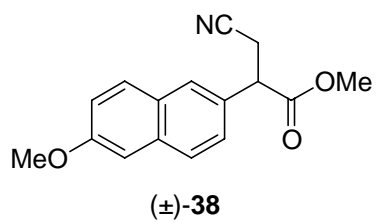


$^1\text{H-NMR}$ (300 MHz, CDCl_3).

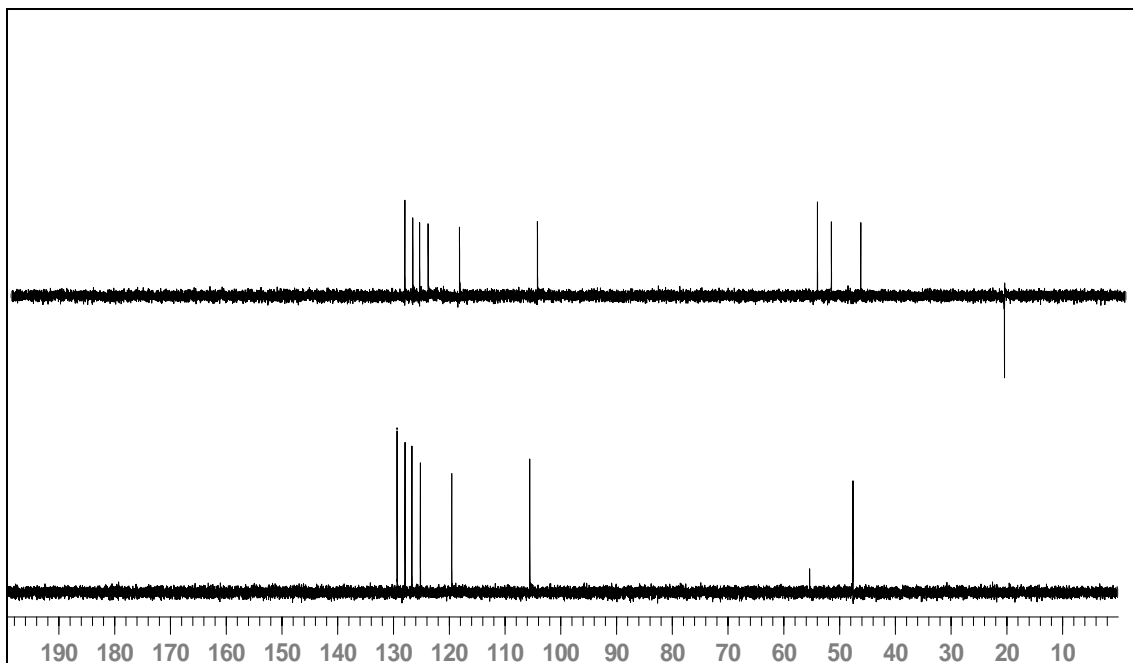


IR (KBr).

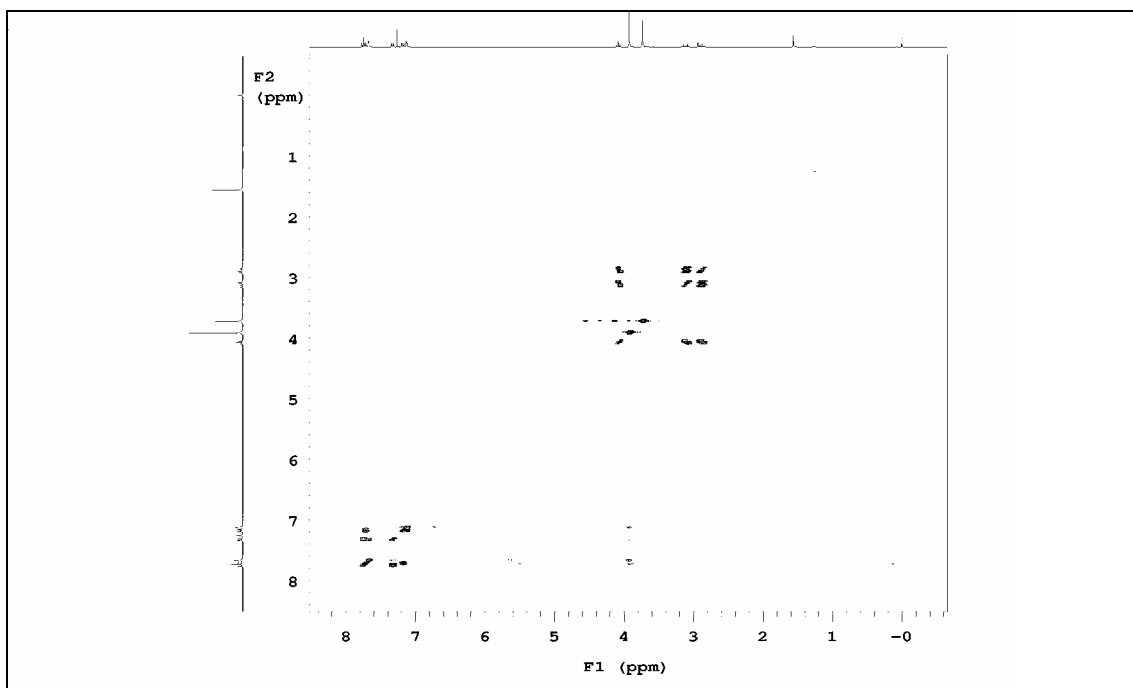
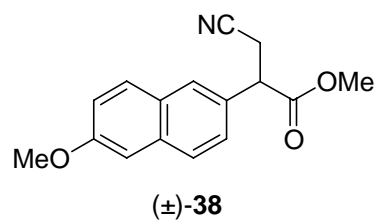
Espectres



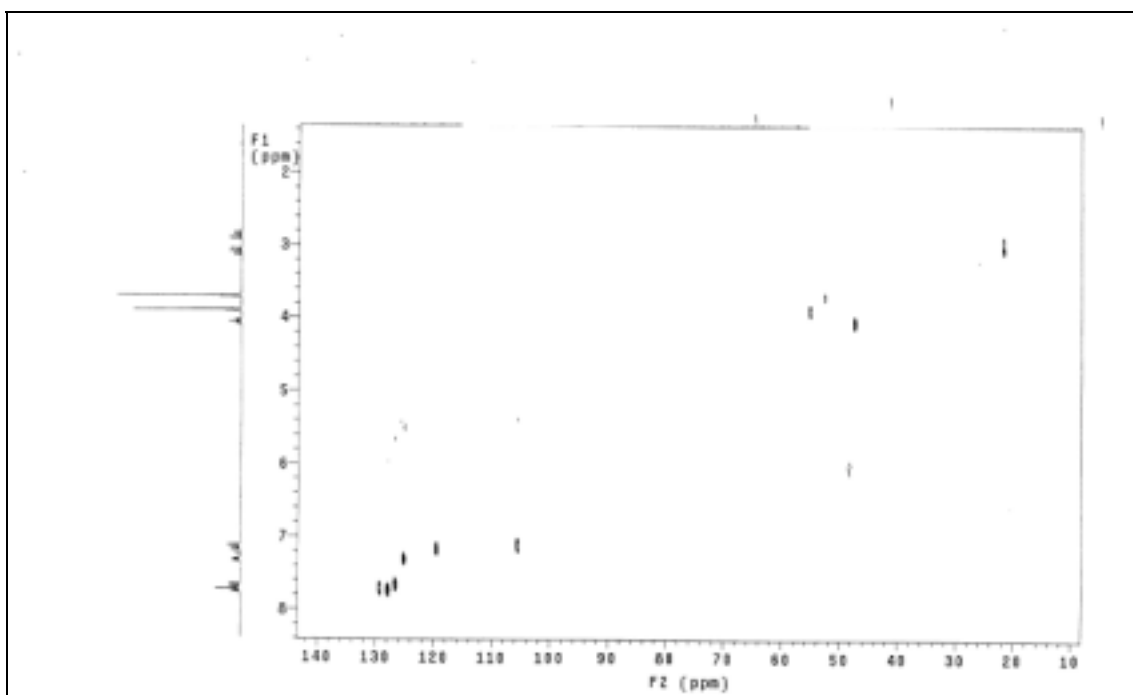
^{13}C -RMN (75'4 MHz, CDCl_3).



^{13}C -RMN (75'4 MHz, CDCl_3), DEPT.

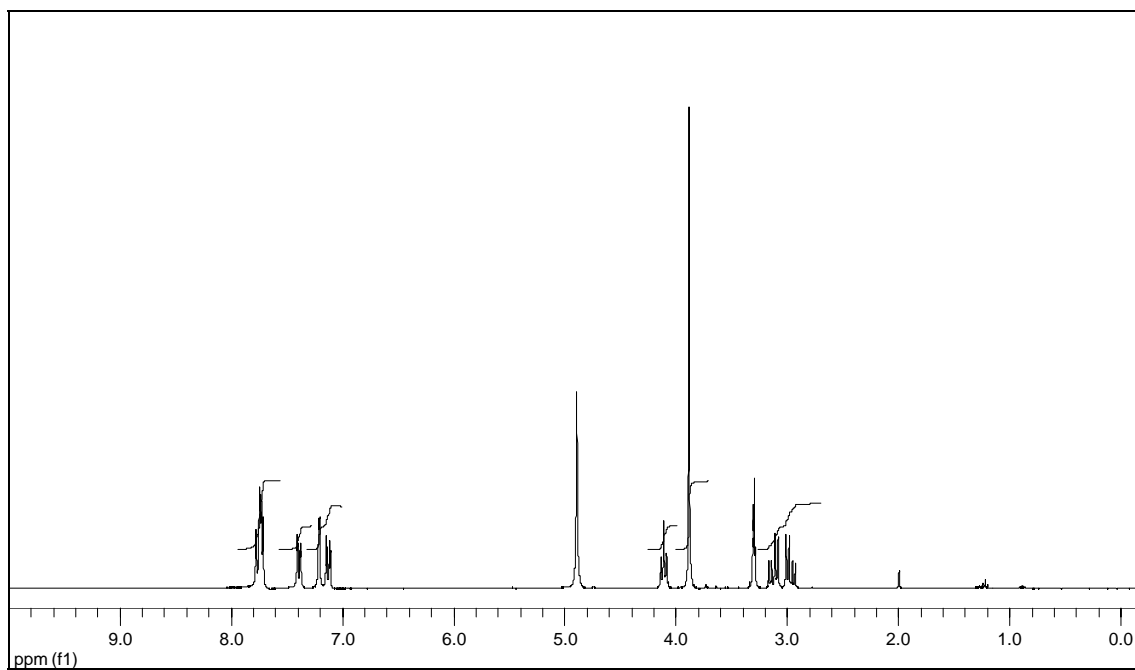
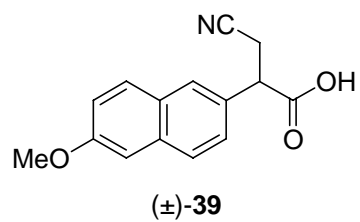


COSY-RMN (300 MHz, CDCl_3).

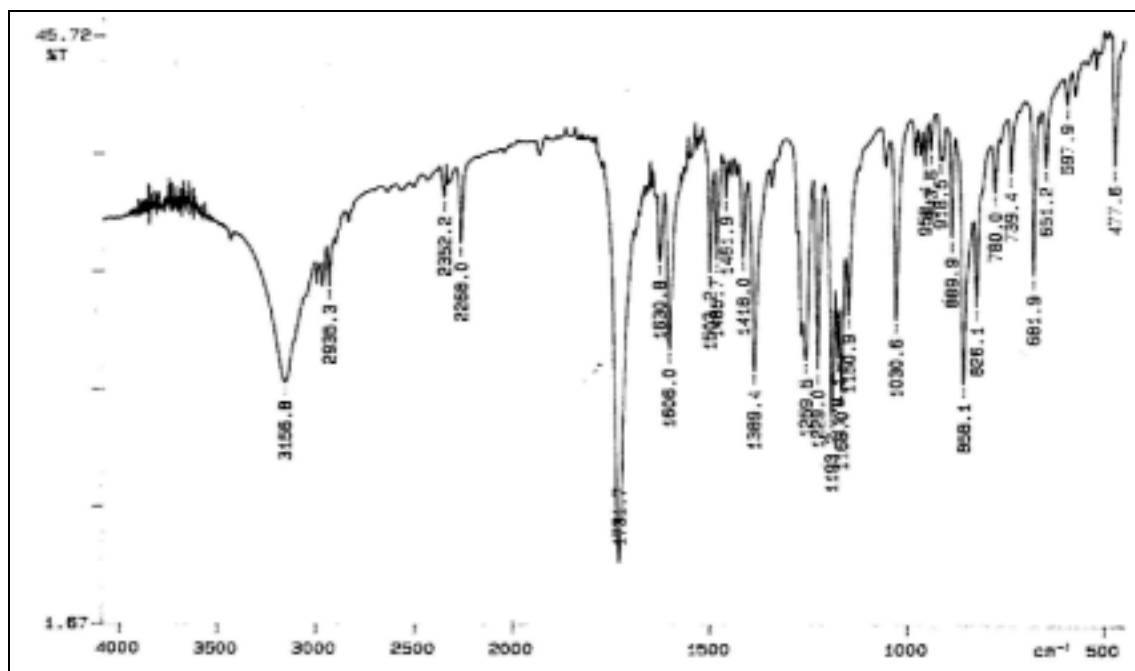


HETCOR-RMN (300 MHz, 75.4 MHz, CDCl_3).

Espectres

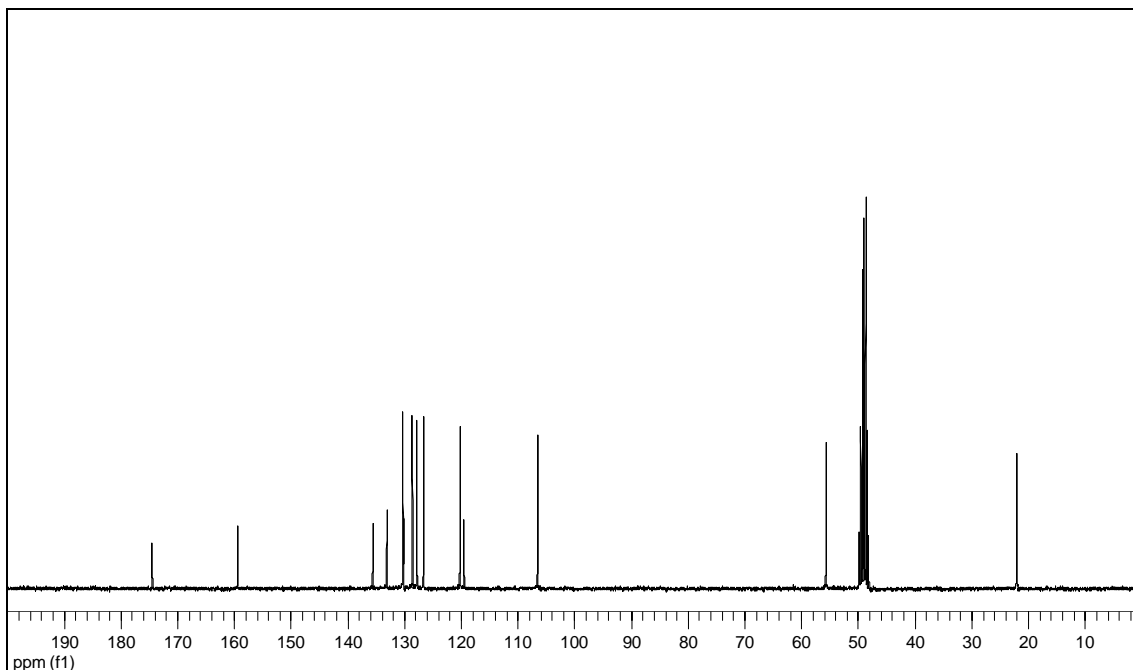
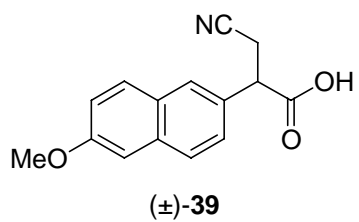


^1H -RMN (300 MHz, CD_3OD).

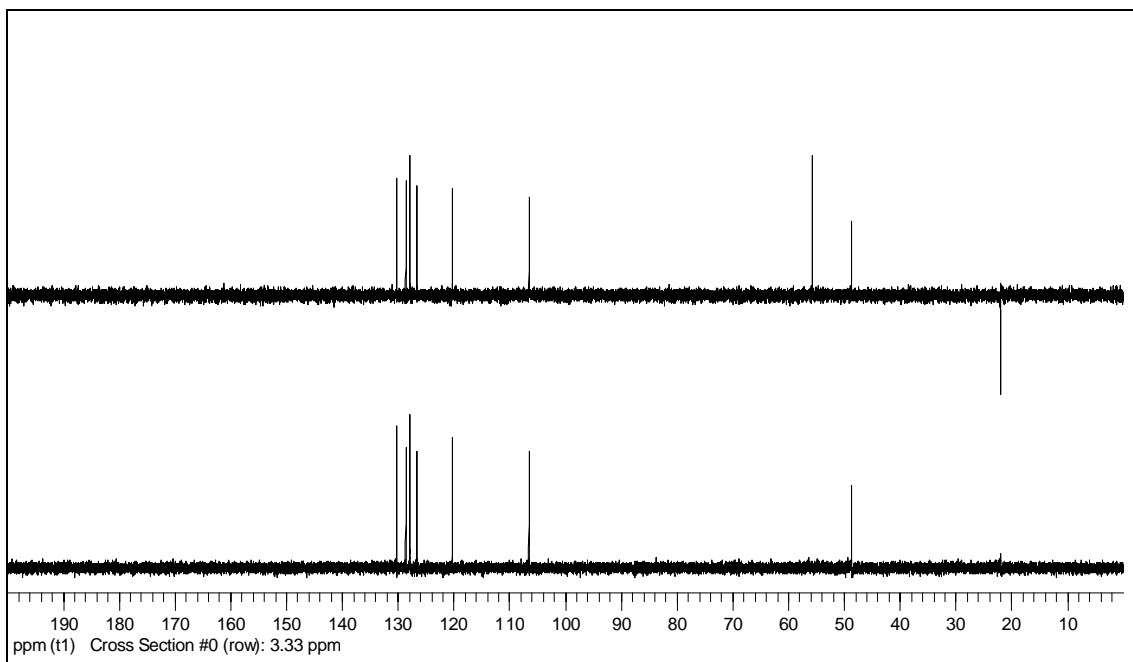


IR (KBr).

Espectres

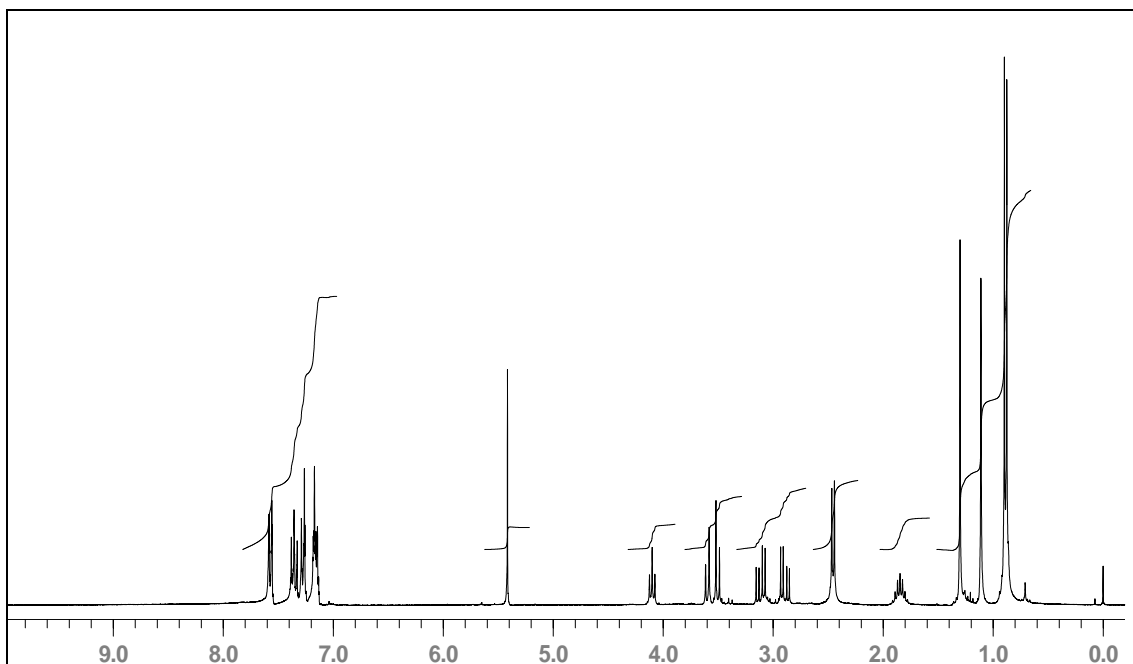
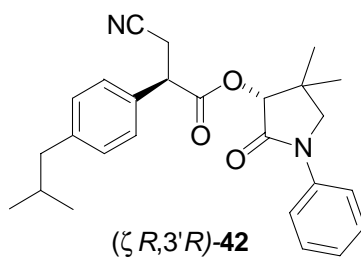


¹³C-RMN (75'4 MHz, CD₃OD).

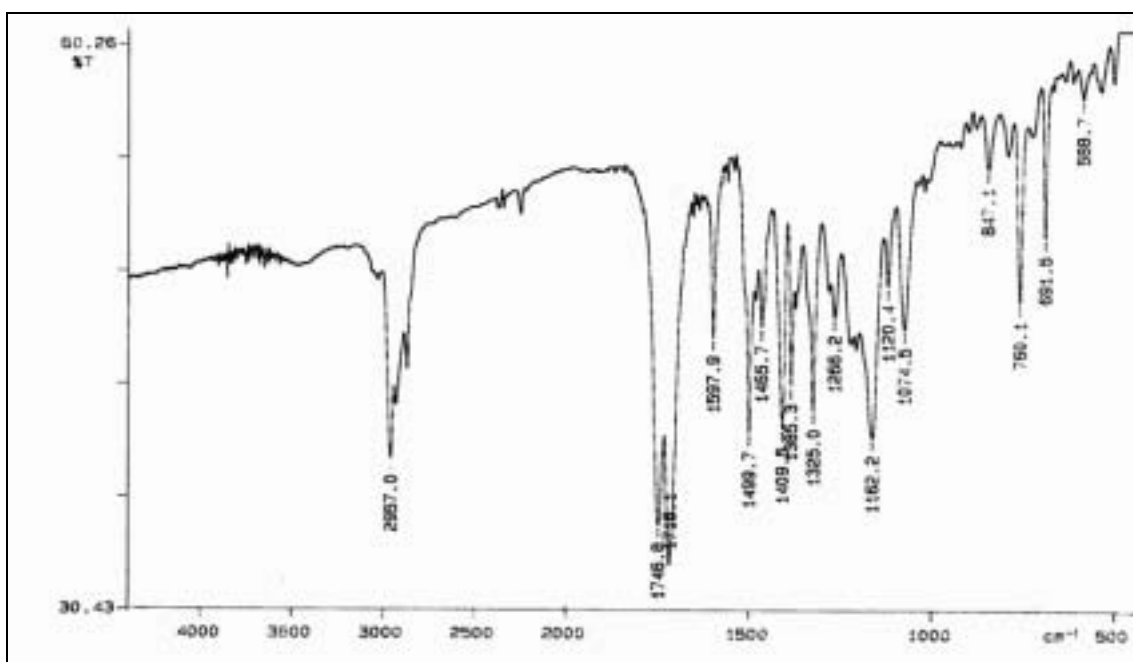


¹³C-RMN (75'4 MHz, CD₃OD), DEPT.

Espectres

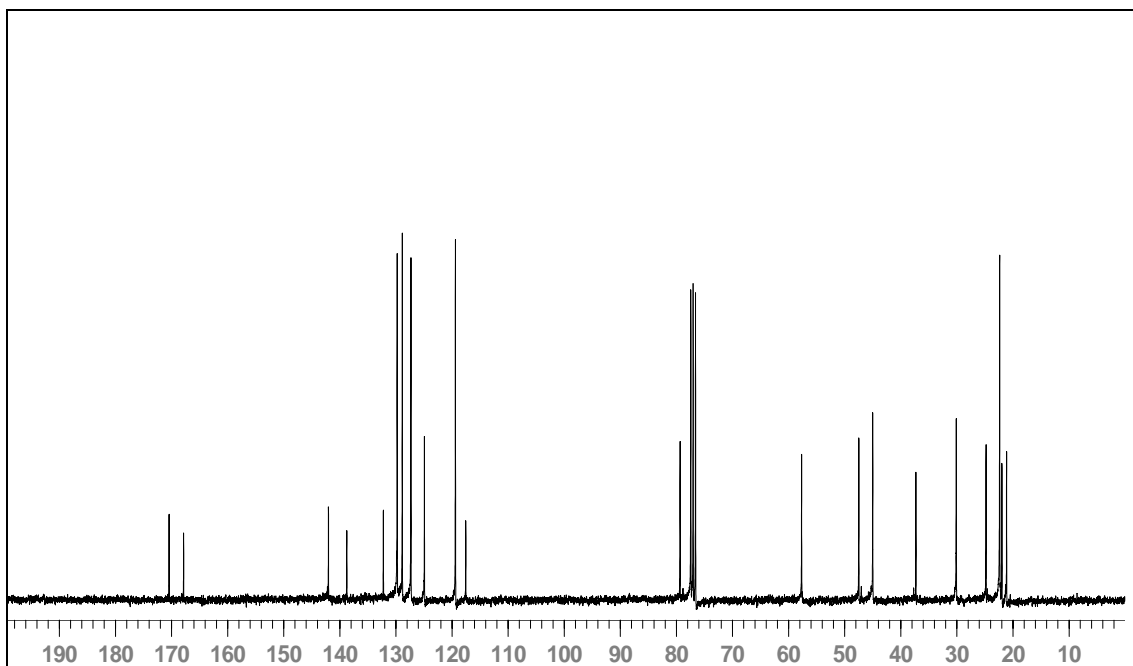
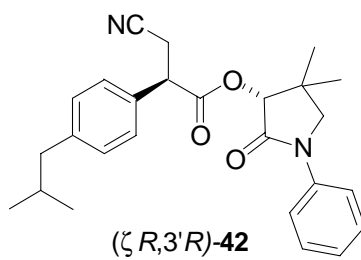


¹H-RMN (300 MHz, CDCl₃).

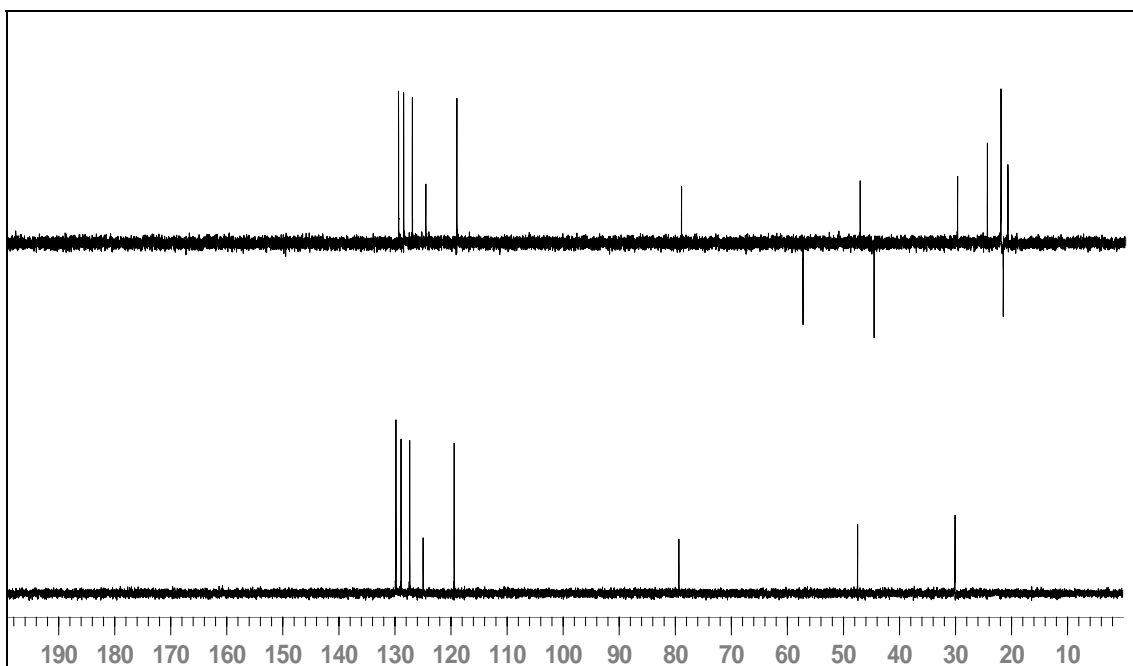


IR (KBr).

Espectres

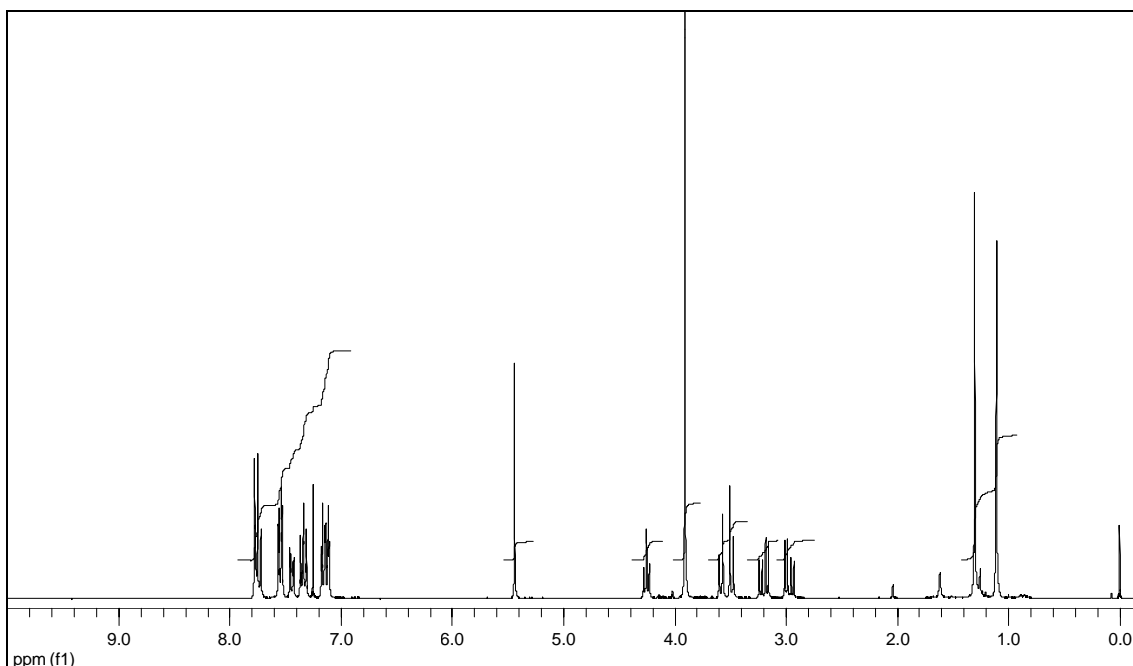
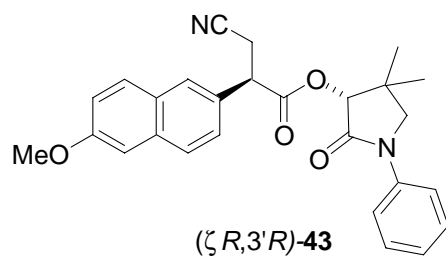


¹³C-RMN (75'4 MHz, CDCl₃).

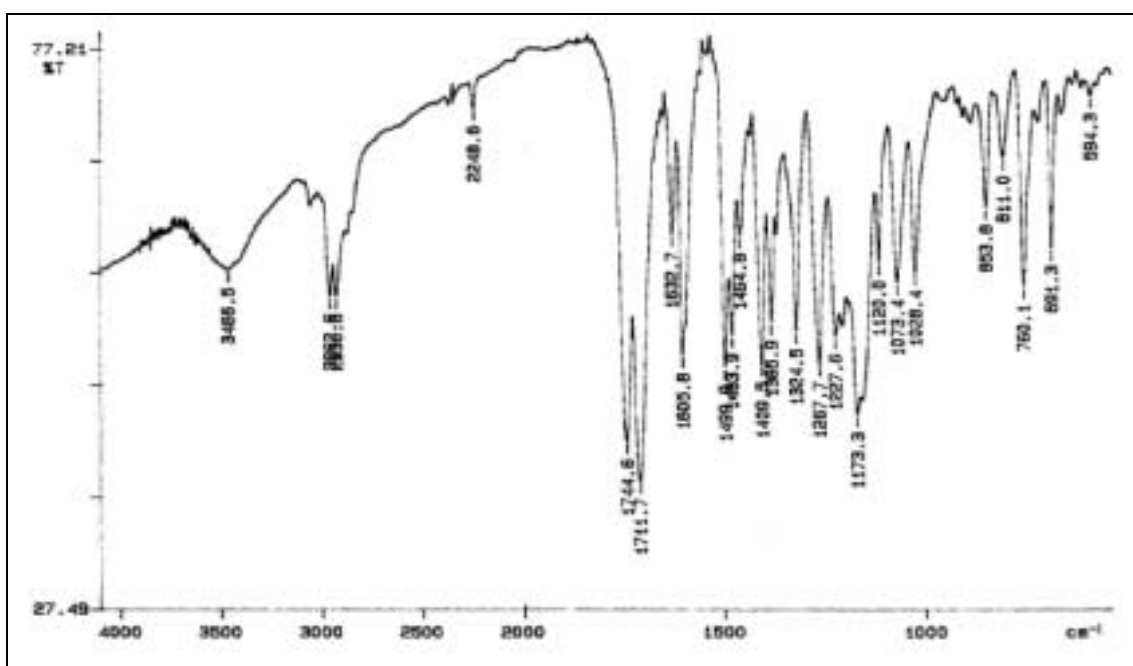


¹³C-RMN (75'4 MHz, CDCl₃), DEPT.

Espectres

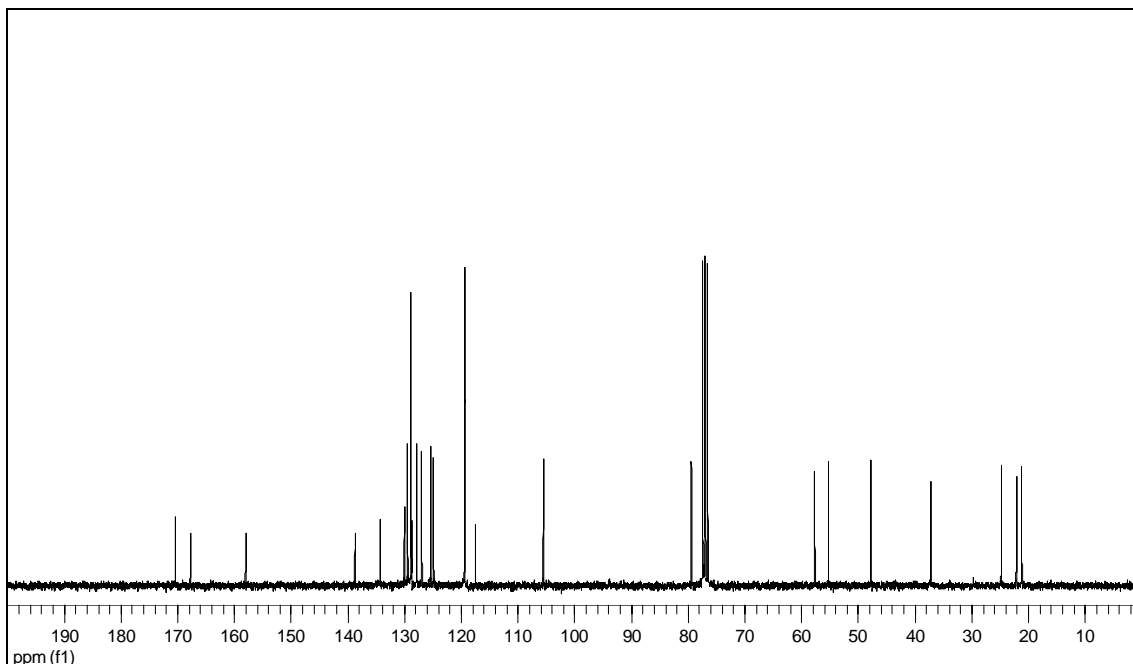
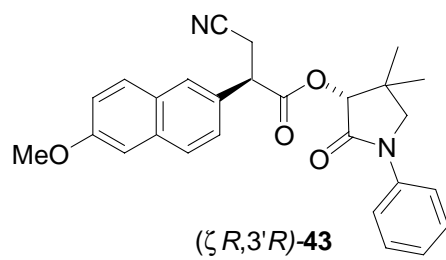


$^1\text{H-RMN}$ (300 MHz, CDCl_3).

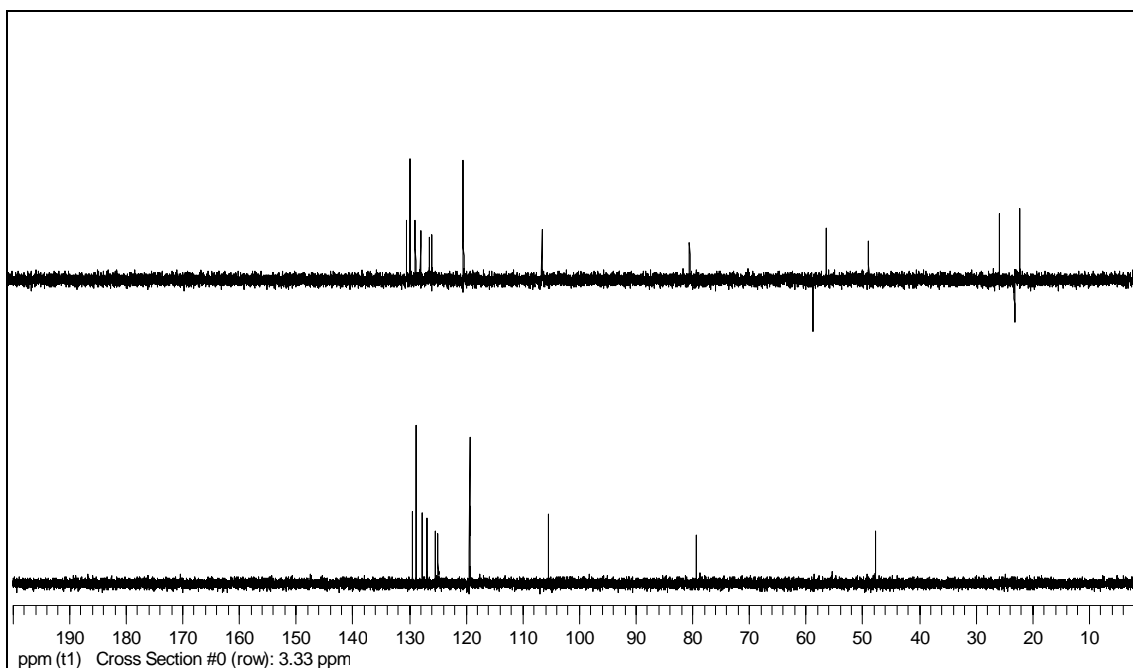


IR (KBr).

Espectres

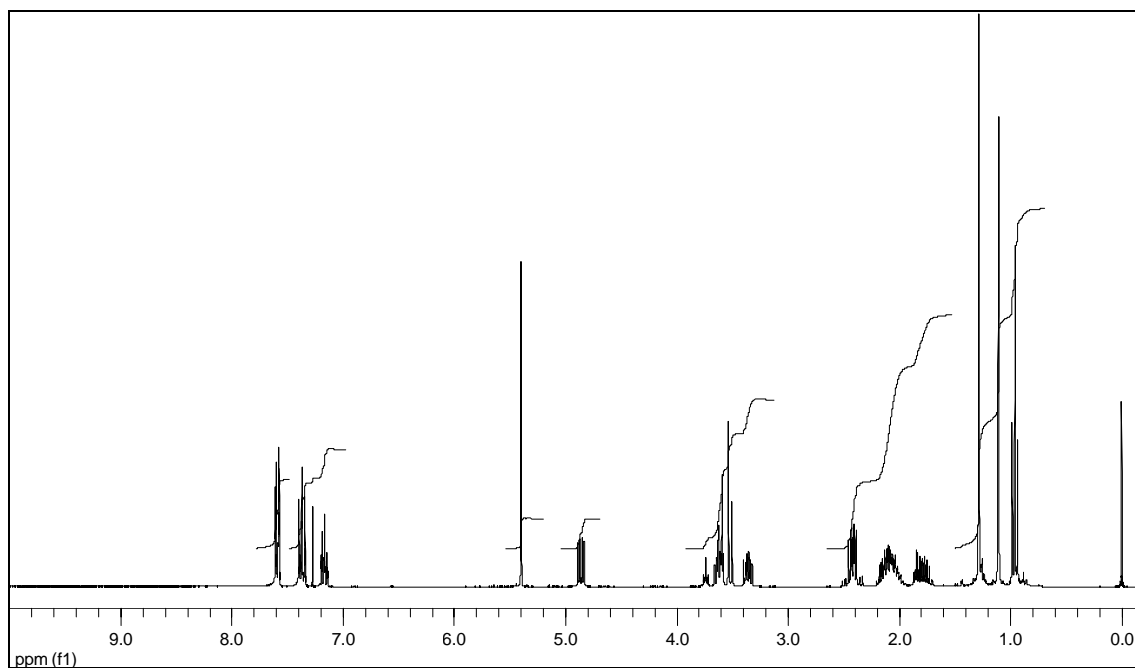
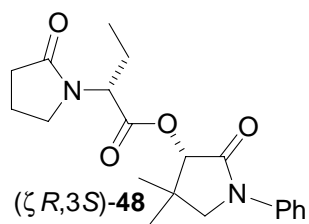


^{13}C -RMN (75'4 MHz, CDCl_3).

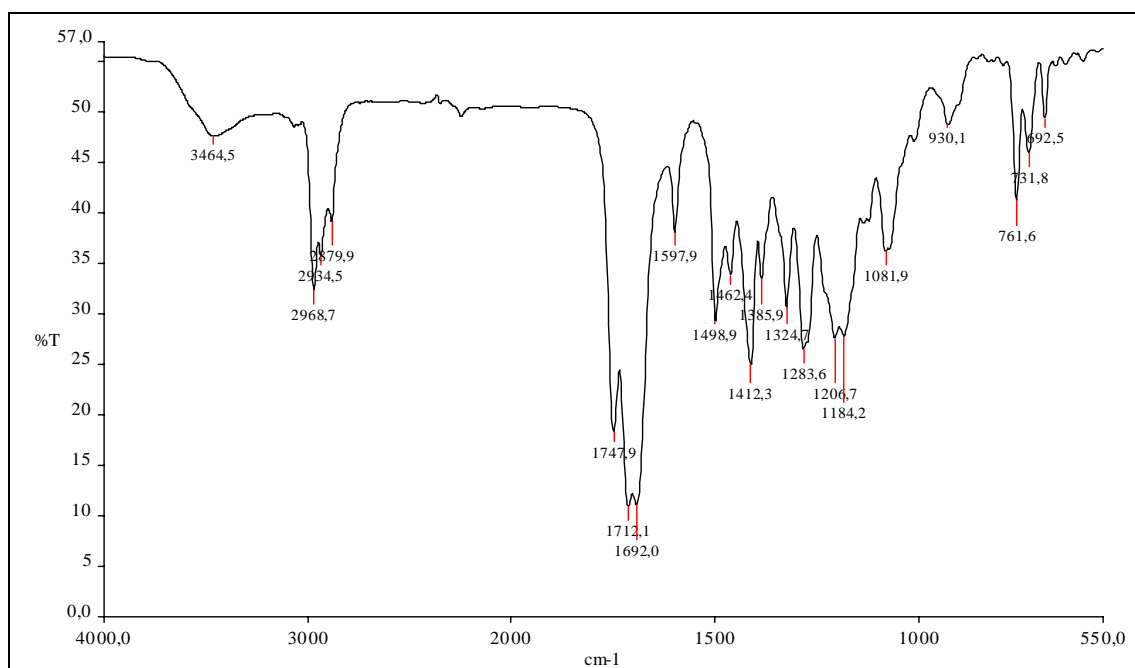


^{13}C -RMN (75'4 MHz, CDCl_3), DEPT.

Espectres

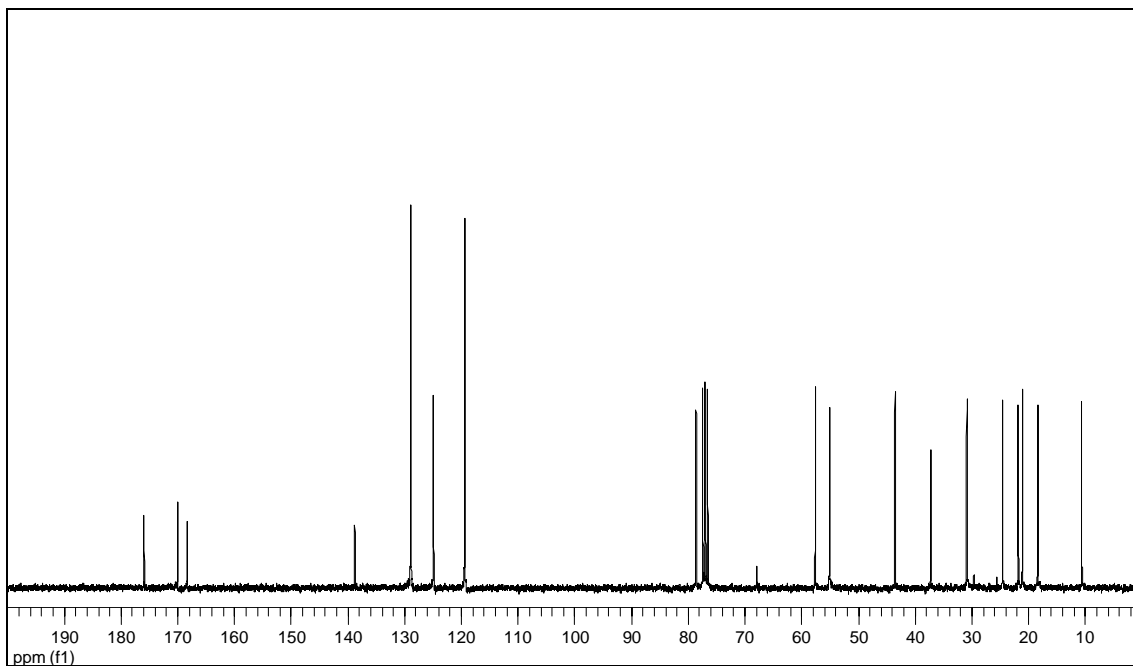
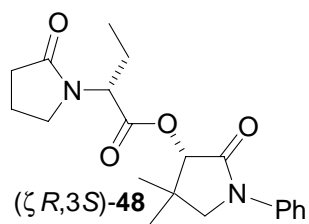


$^1\text{H-NMR}$ (300 MHz, CDCl_3).

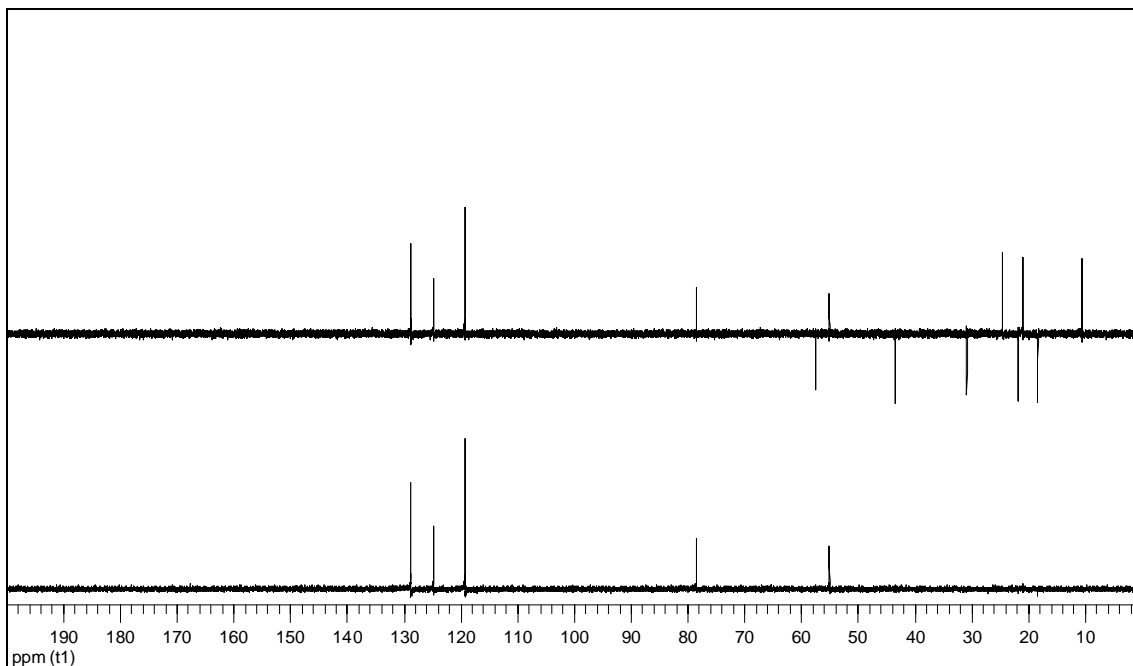


IR (NaCl).

Espectres

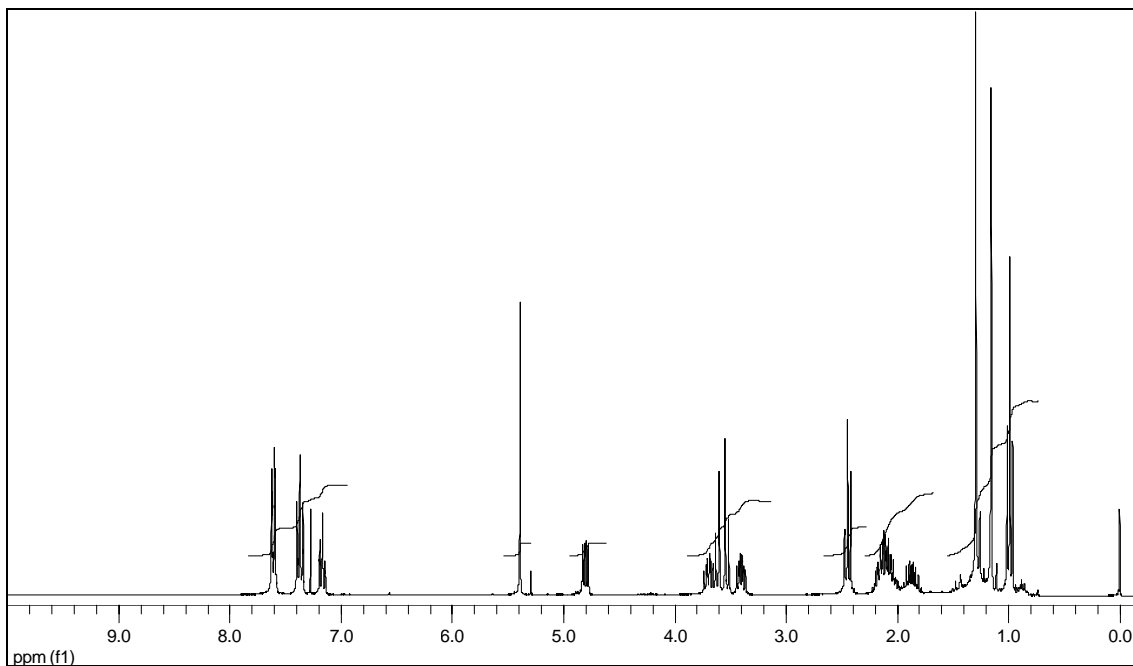
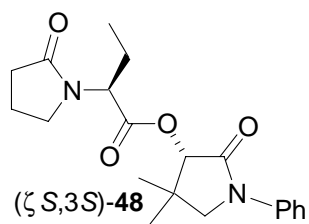


^{13}C -RMN (75'4 MHz, CDCl_3).

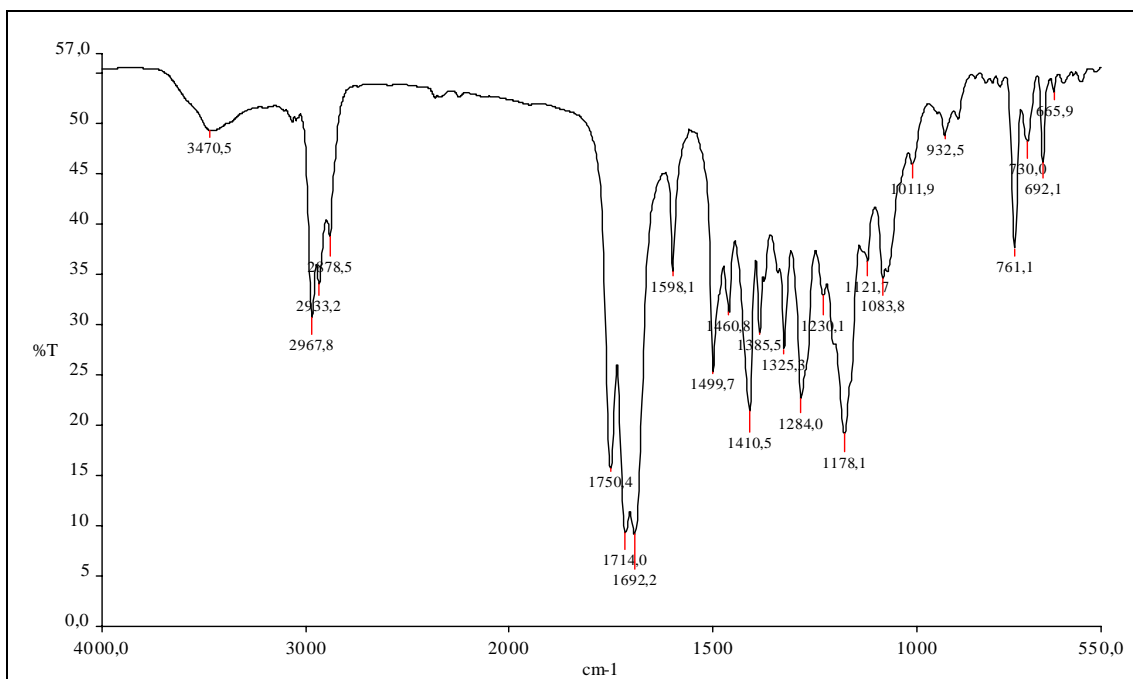


^{13}C -RMN (75'4 MHz, CDCl_3), DEPT.

Espectres

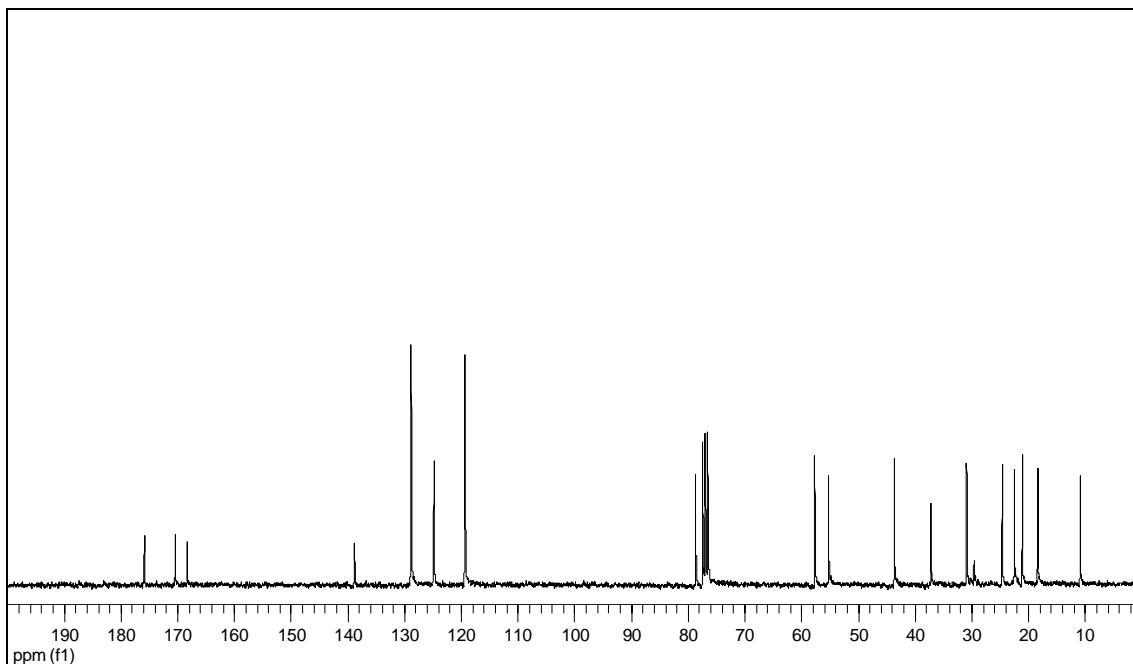
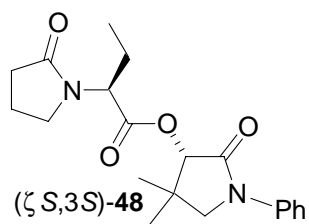


$^1\text{H-NMR}$ (300 MHz, CDCl_3).

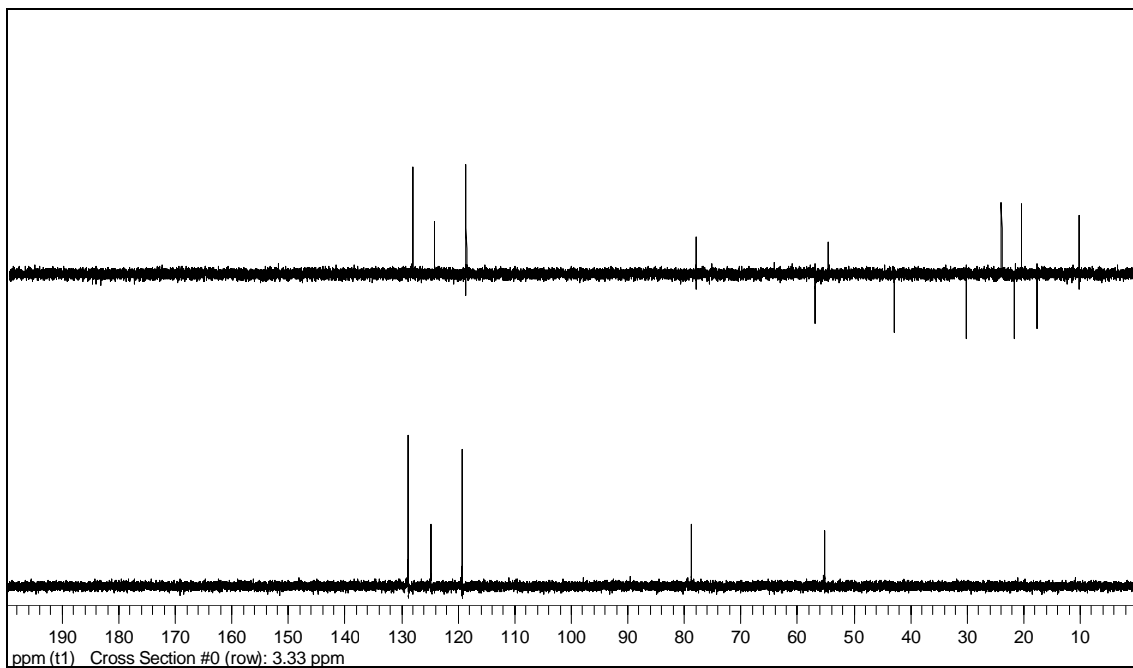


IR (NaCl).

Espectres

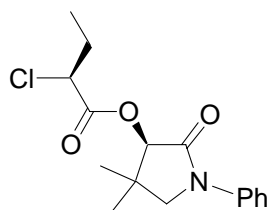


^{13}C -RMN (75'4 MHz, CDCl_3).

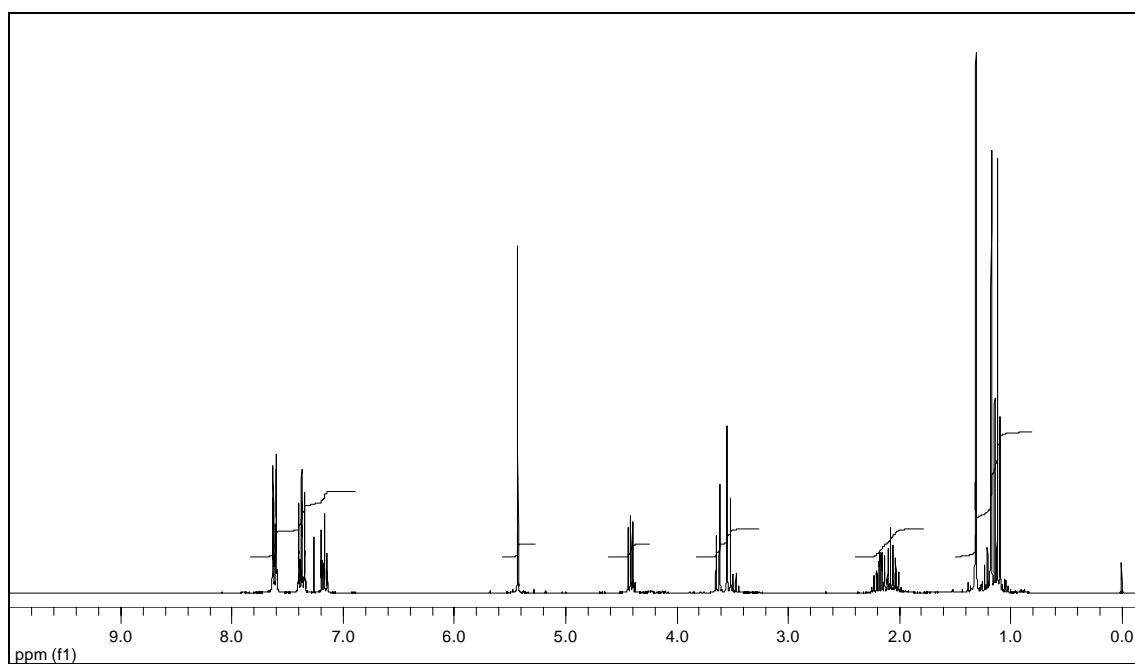


^{13}C -RMN (75'4 MHz, CDCl_3), DEPT.

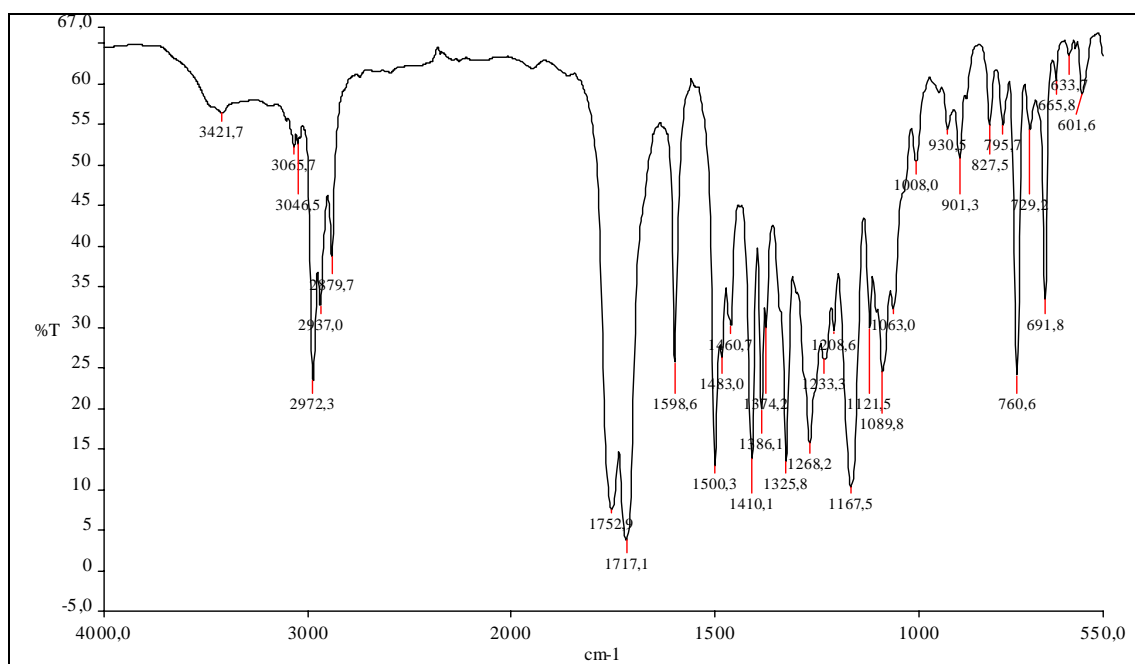
Espectres



(ζ S,3R)-51

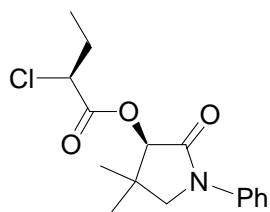


¹H-RMN (300 MHz, CDCl₃).

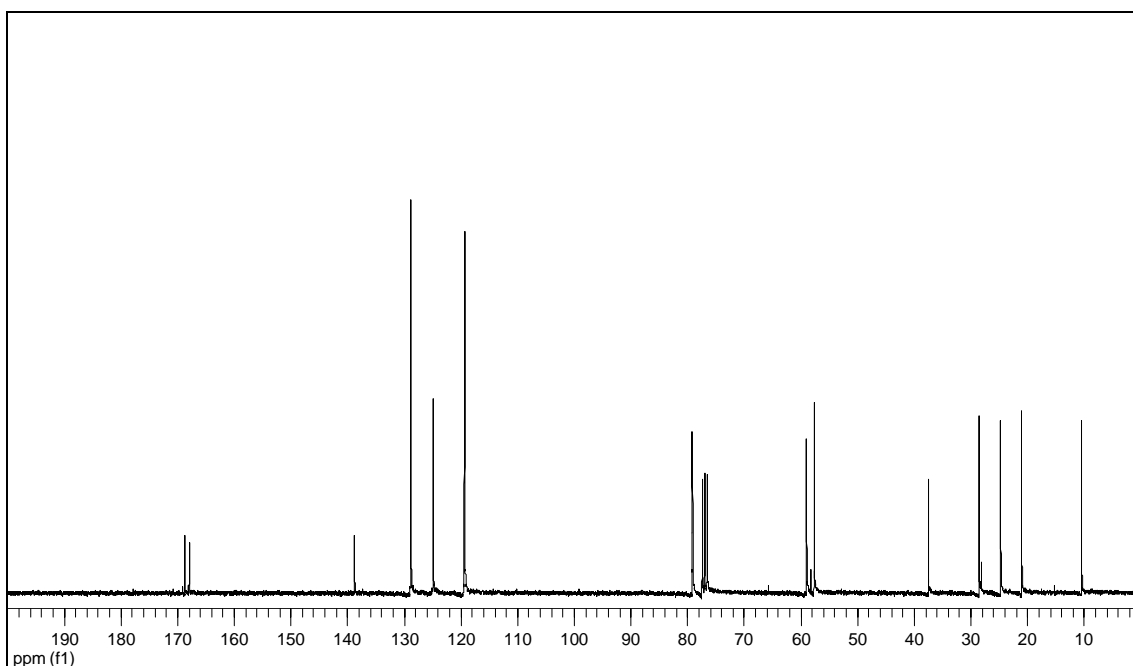


IR (NaCl).

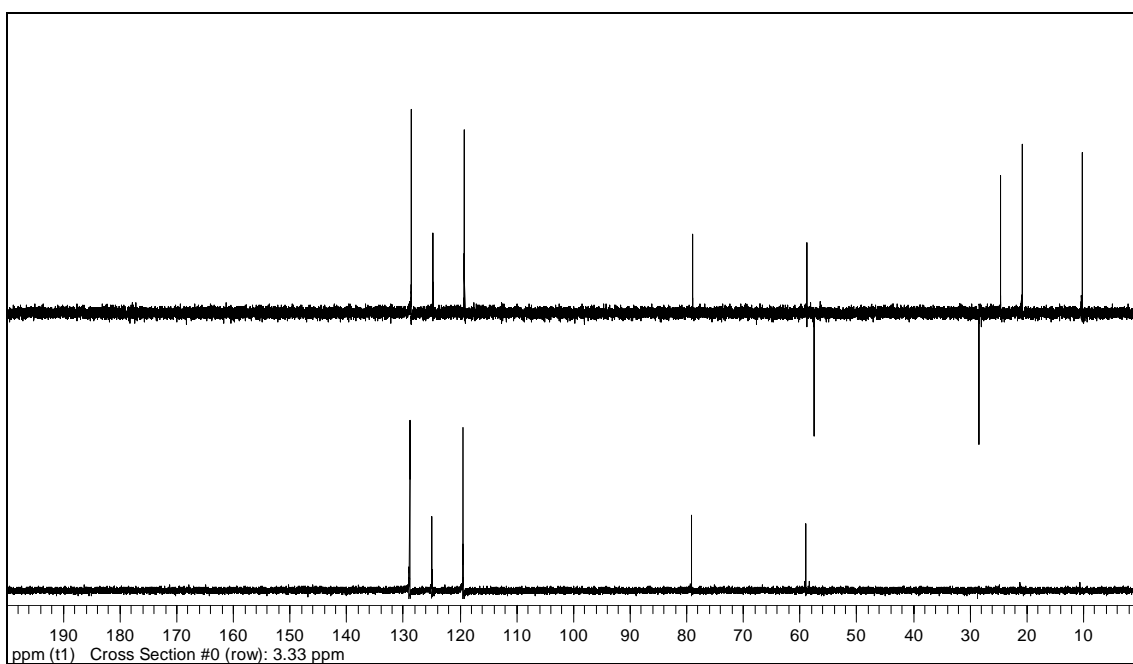
Espectres



(ζ S,3R)-51

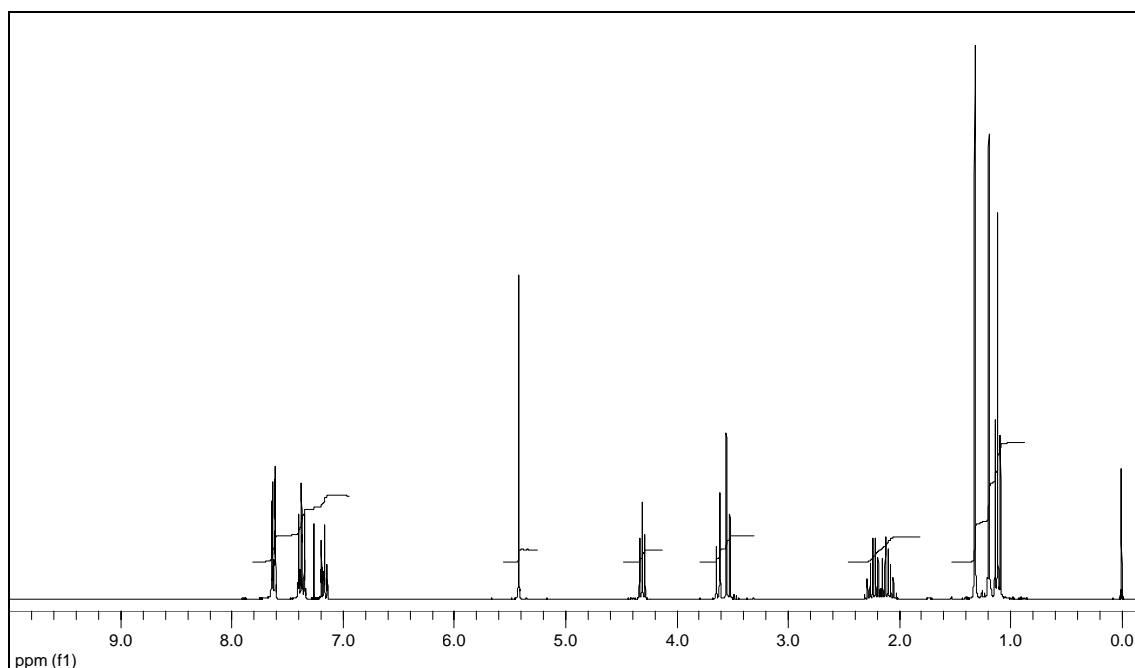
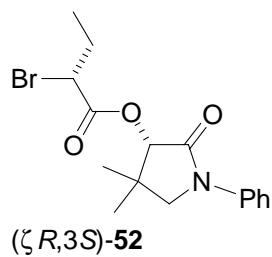


¹³C-RMN (75'4 MHz, CDCl₃).

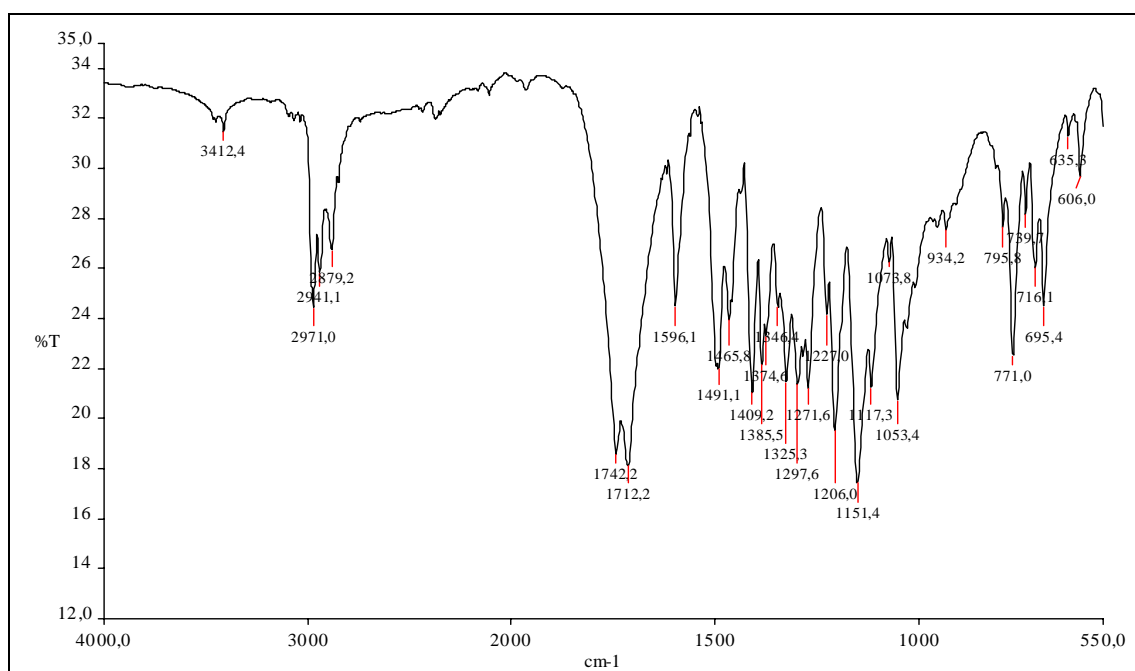


¹³C-RMN (75'4 MHz, CDCl₃), DEPT.

Espectres

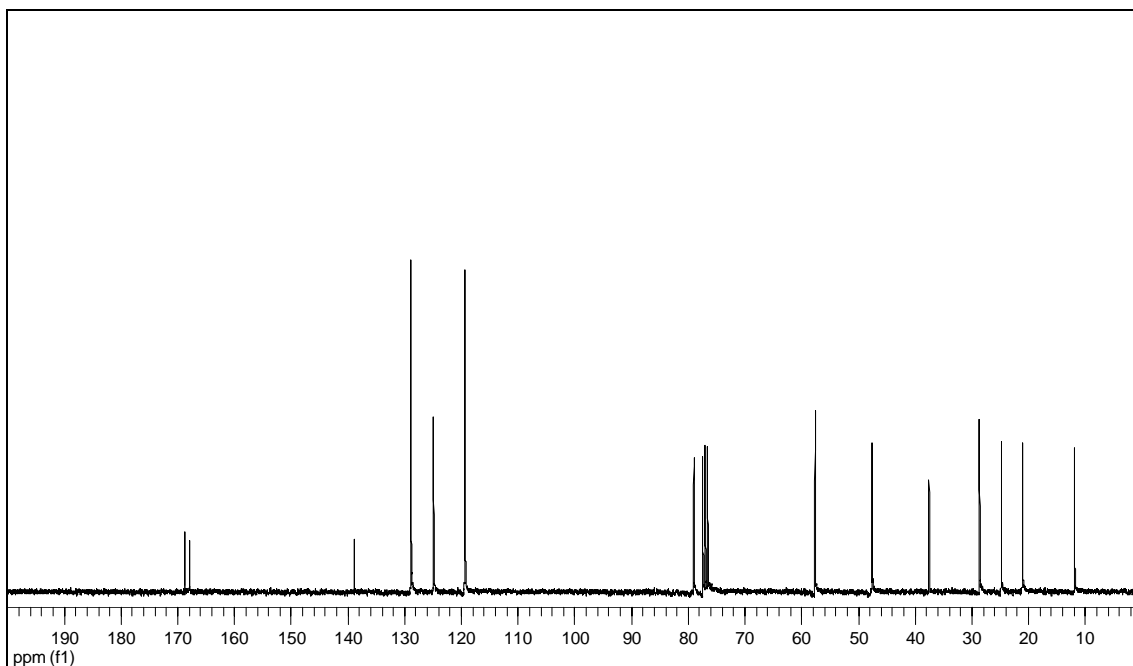
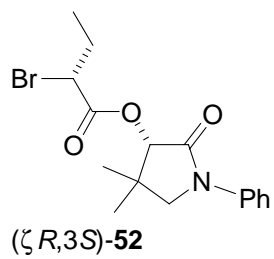


$^1\text{H-NMR}$ (300 MHz, CDCl_3).

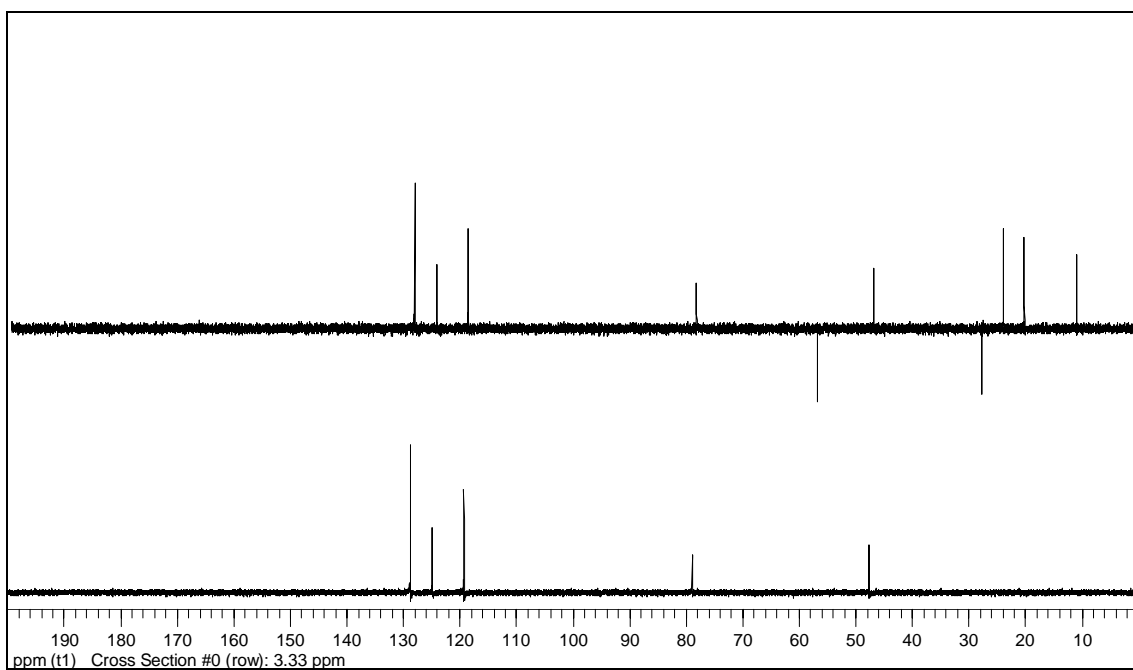


IR (KBr).

Espectres



¹³C-RMN (75'4 MHz, CDCl₃).



¹³C-RMN (75'4 MHz, CDCl₃), DEPT.