

“Lligands hemilàbils en la reacció de Pauson-Khand
intermolecular i asimètrica”

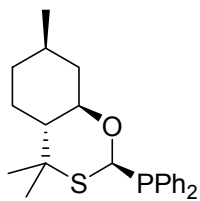
Jordi Solà i Oller

Departament de Química Orgànica

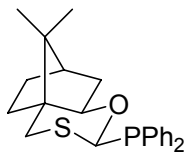
Programa de doctorat: Química Orgànica–Bienni 2002-2004

Director de tesi: Xavier Verdaguer i Espauella

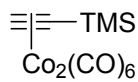
Índex d'estructures seleccionades



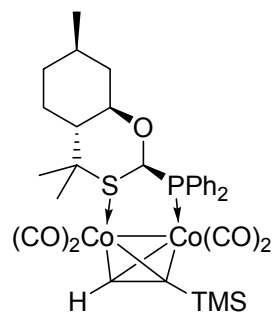
9



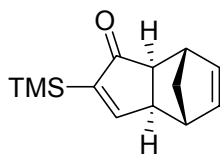
10



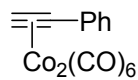
11



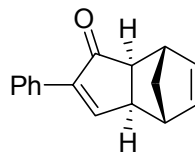
12



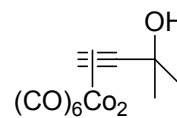
13



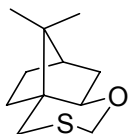
19



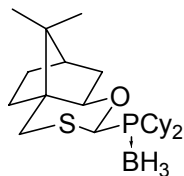
20



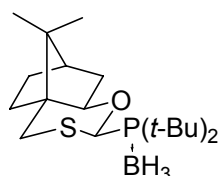
21



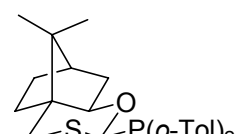
91



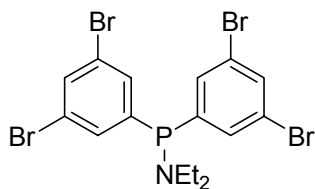
92



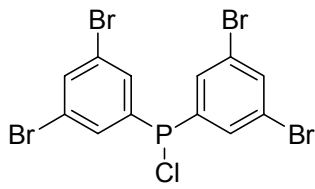
93



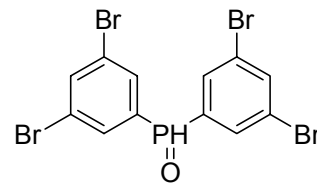
94



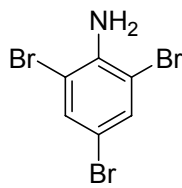
98



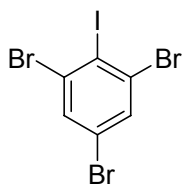
99



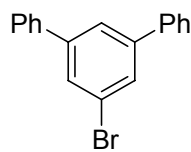
100



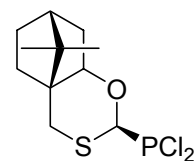
102



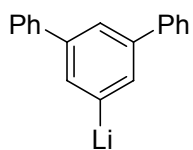
103



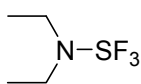
104



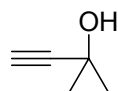
105



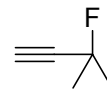
106



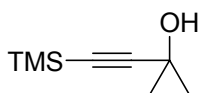
108



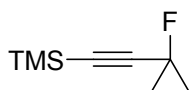
114



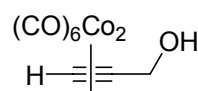
115



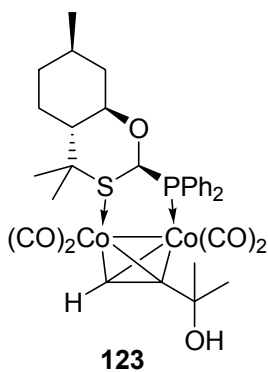
117



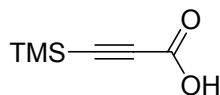
118



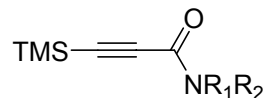
121



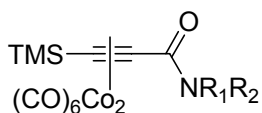
123



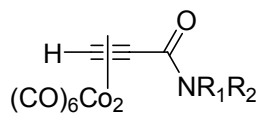
125



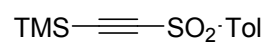
126-130



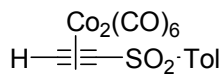
131-135



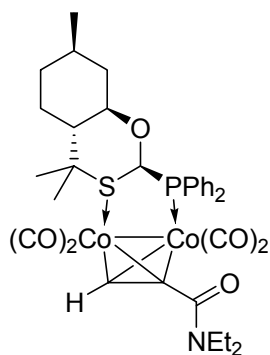
136-140



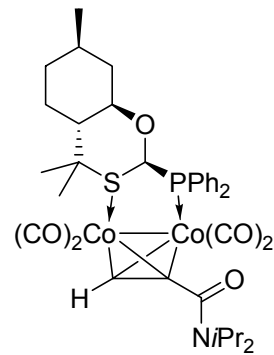
141



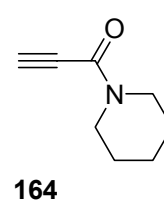
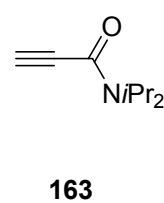
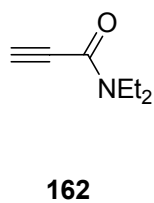
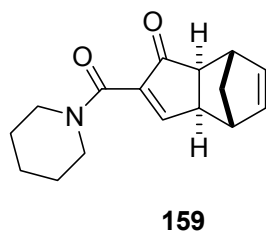
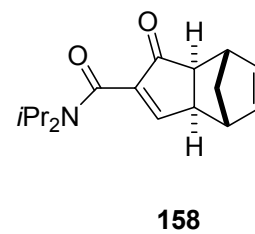
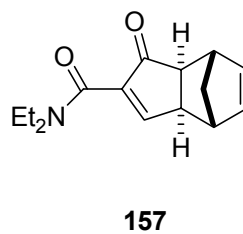
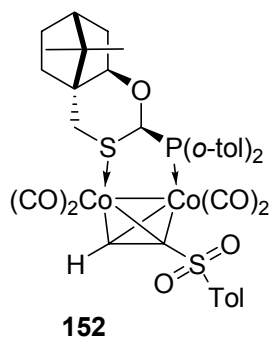
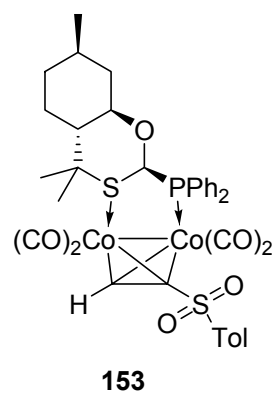
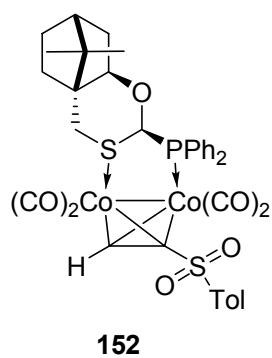
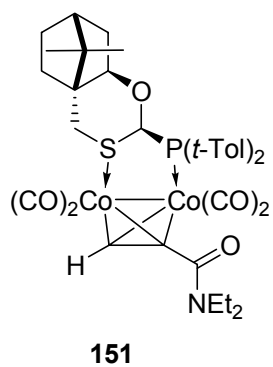
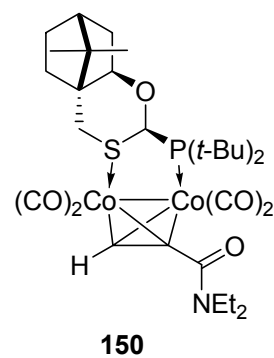
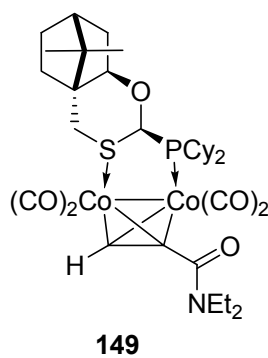
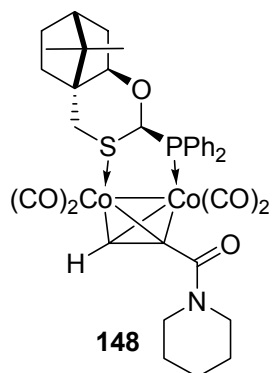
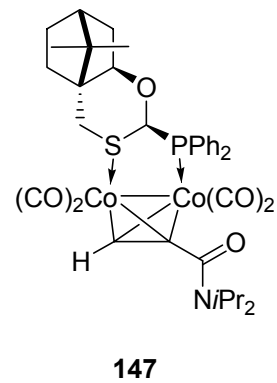
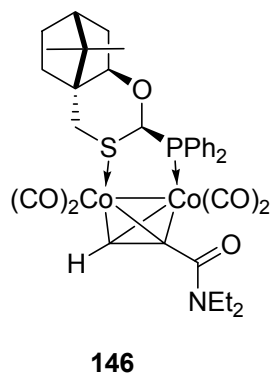
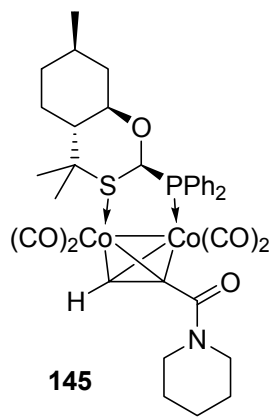
142

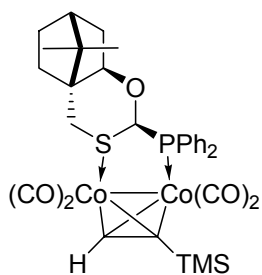


143

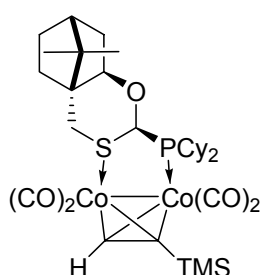


144

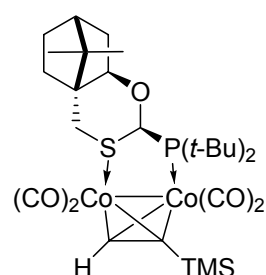




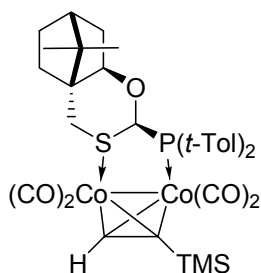
165



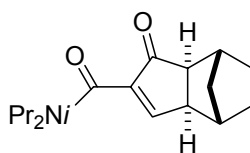
166



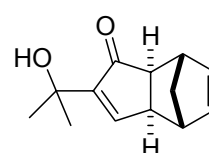
167



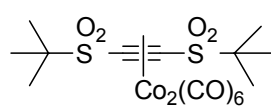
168



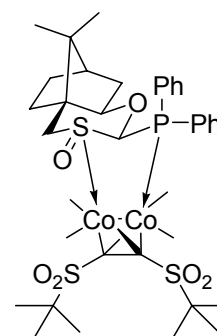
169



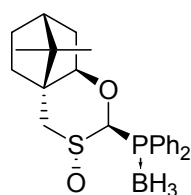
170



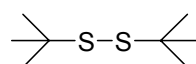
175



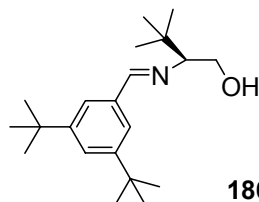
176b



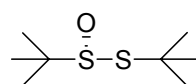
172



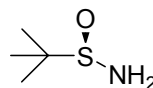
185



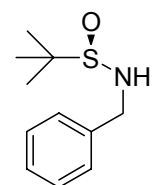
186



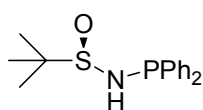
187



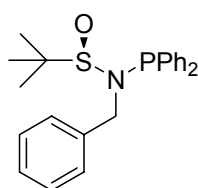
188



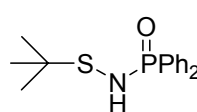
189



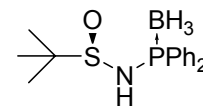
190



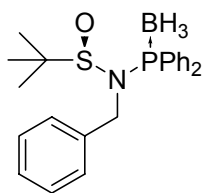
191



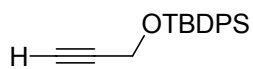
192



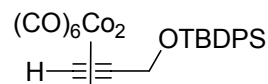
193



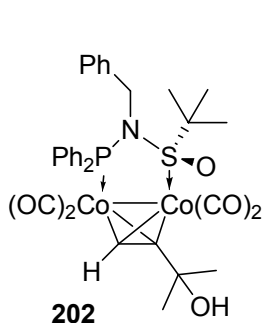
194



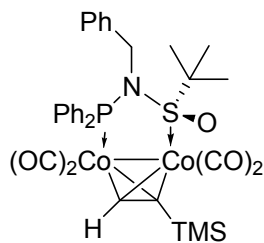
200



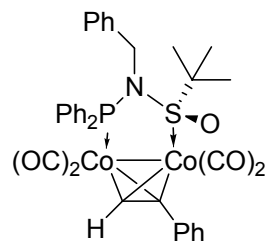
201



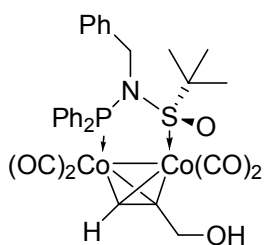
202



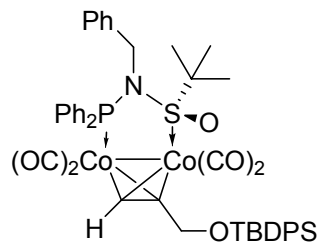
203



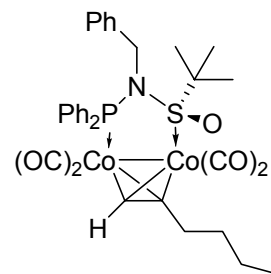
204



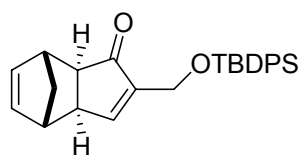
205



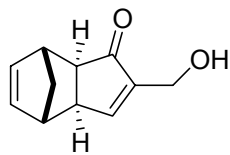
206



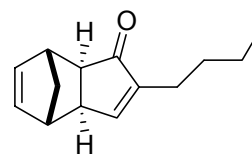
207



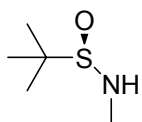
208



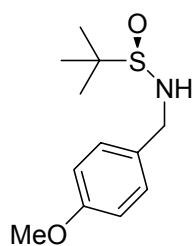
209



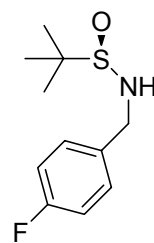
210



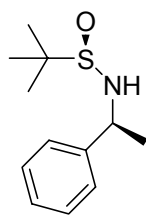
216



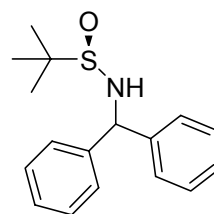
217



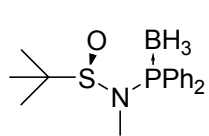
218



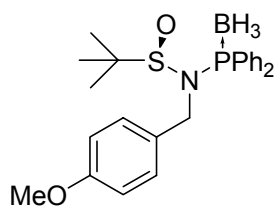
219



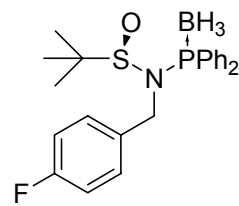
220



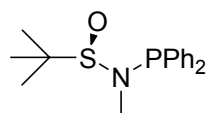
221



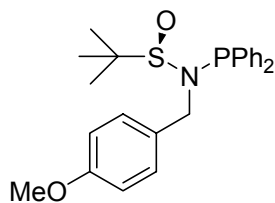
222



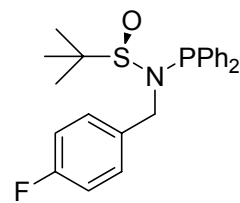
223



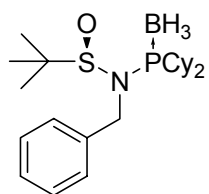
226



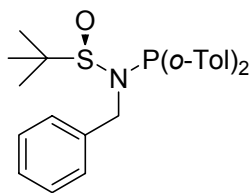
227



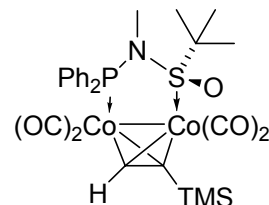
228



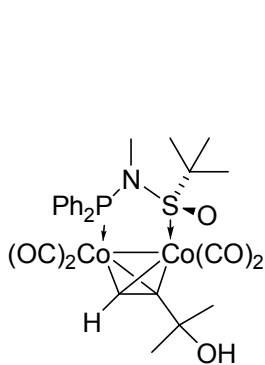
229



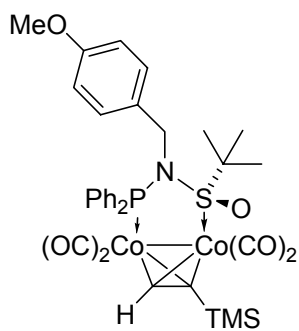
230



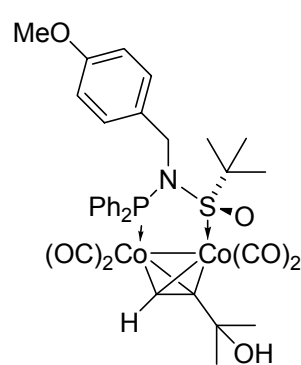
233



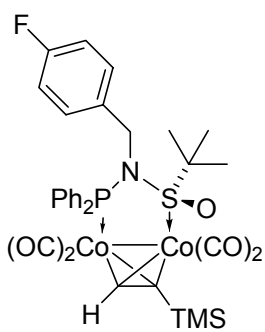
234



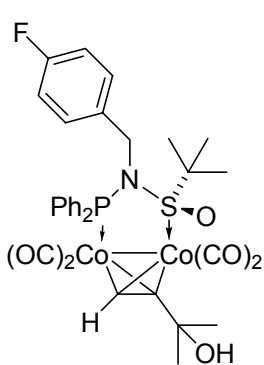
235



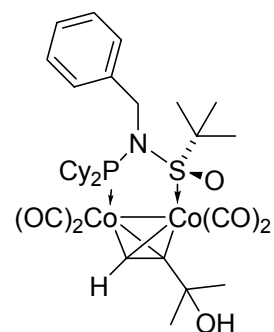
236



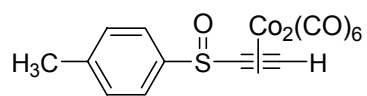
237



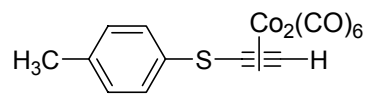
238



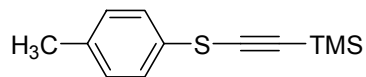
240



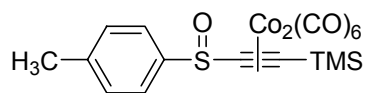
243



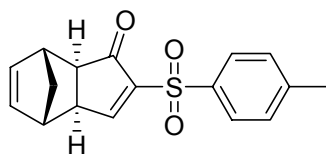
244



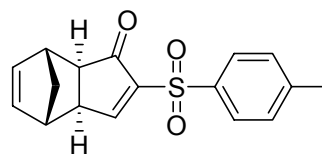
245



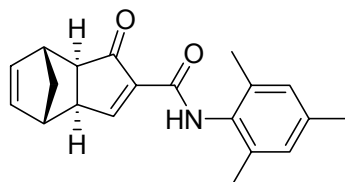
246



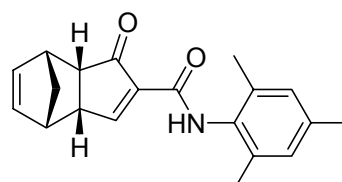
241a



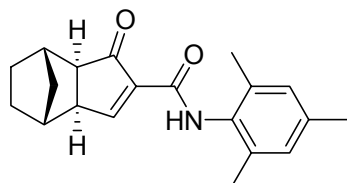
241b



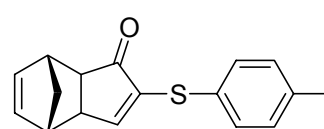
242a



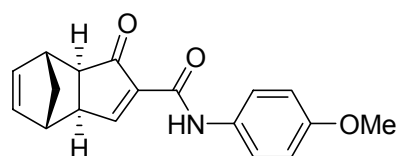
242b



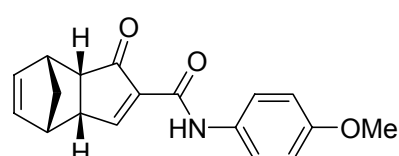
247



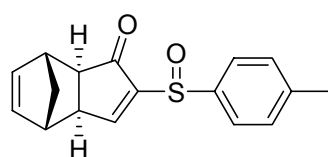
250



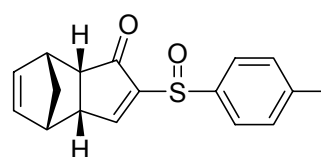
248a



248b



249a



249b

