

3.4.3 Samples of a registered sequence

When working with video sequences, dealing with the high volume of data is almost as much complex as the particular algorithm we apply to the individual frames. In particular, it is difficult to validate the accuracy along the sequence. In this section, we present the full sequence after automatic registration.

We have drawn a set of circle in fixed locations in the image in order to assess possible displacements of its contents. The sequence depicted illustrates the difficulties of the registration: very different image contrast, change in the features and large displacements. Despite this, see that the circles are at the proper situation, thus confirming the correctness of the registration.

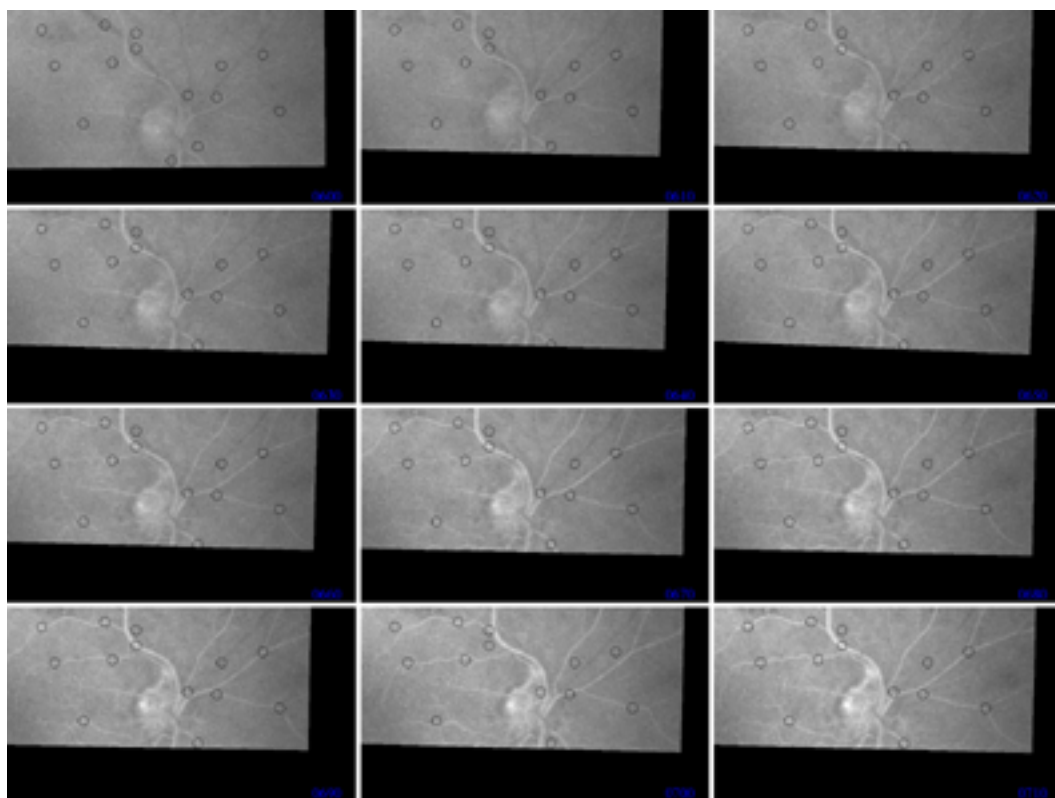


Figure 3.12: Samples of sequence B after registration (1). The circles have been placed after registration in the same coordinates for all the frames in order to compare the correctness of the result.



Figure 3.13: Samples of sequence B after registration (2)

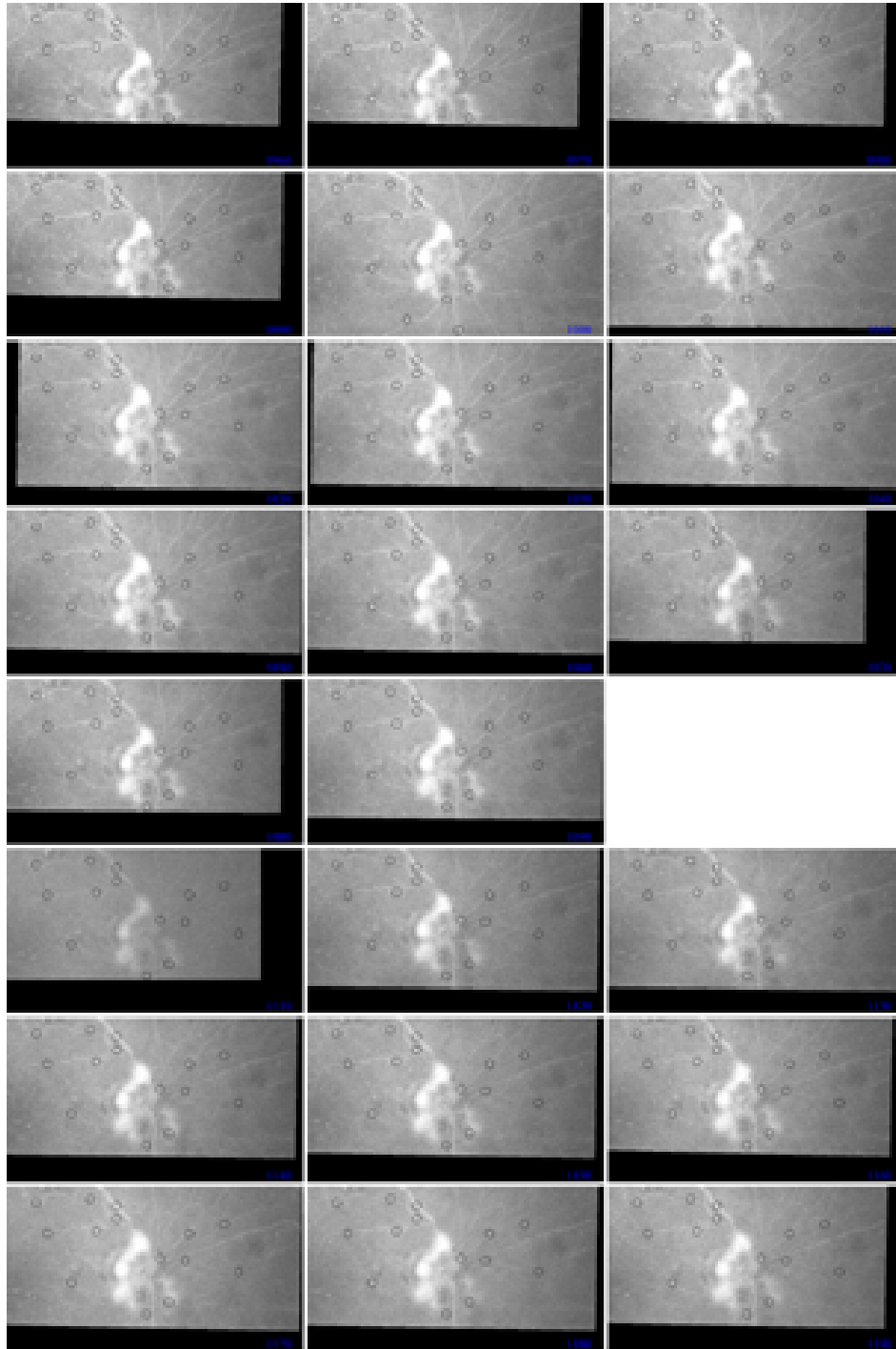


Figure 3.14: Samples of sequence B after registration (3)