

Figura 5.24. Núcleo lingote de Rheocasting 5 minutos a 550 °C.

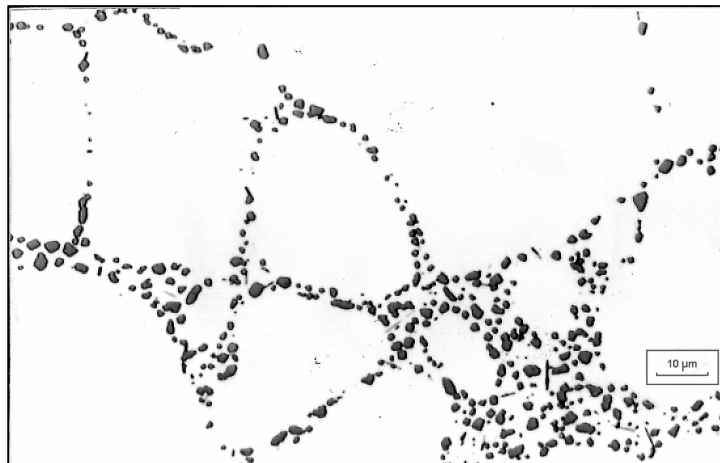


Figura 5.25. Núcleo lingote de Rheocasting 30 minutos a 550 °C.

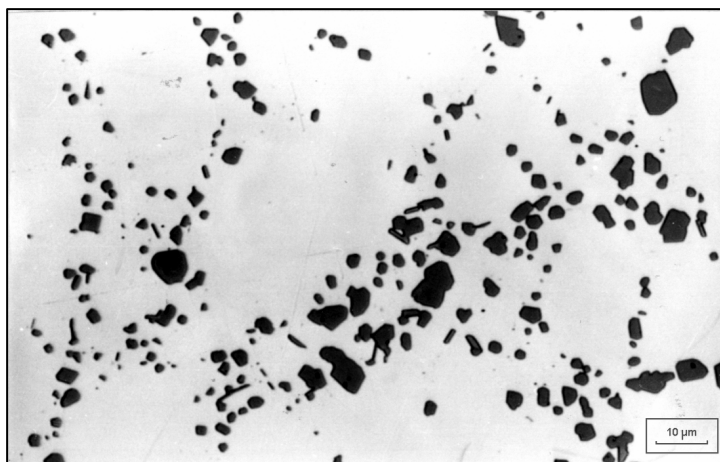


Figura 5.26. Núcleo lingote de Rheocasting 12 h a 550 °C.

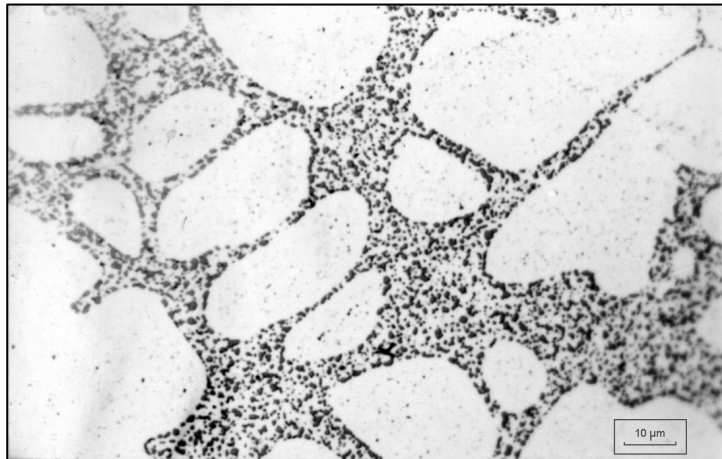


Figura 5.27. Zona intermedia lingote de Rheocasting 30 minutos a 450 °C.

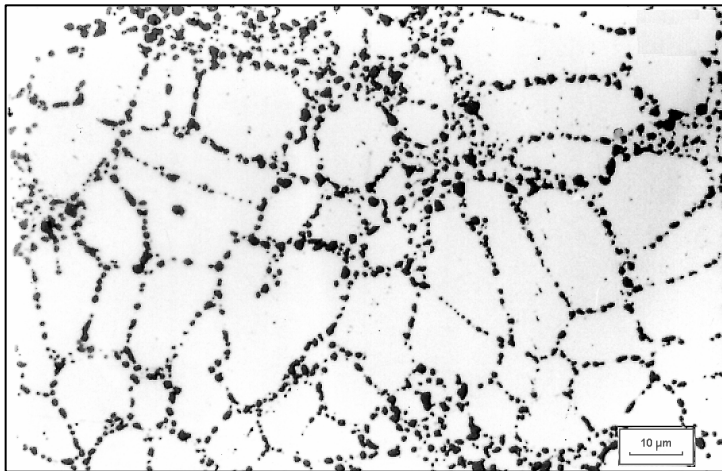


Figura 5.28. Zona intermedia lingote de Rheocasting 3 h a 450 °C.

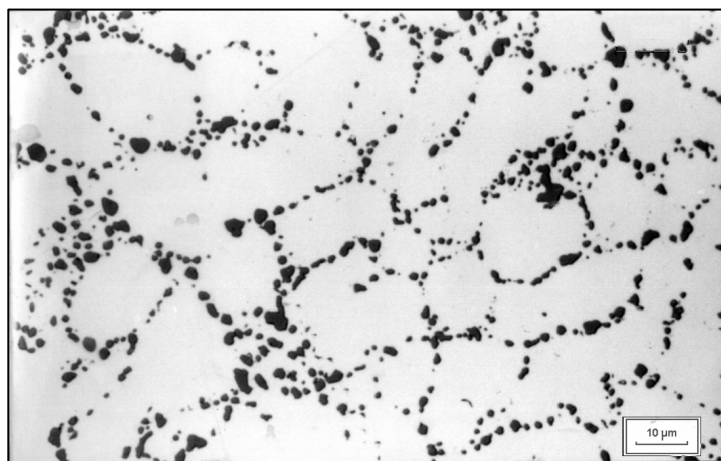


Figura 5.29. Zona intermedia lingote de Rheocasting 24 h a 450 °C.

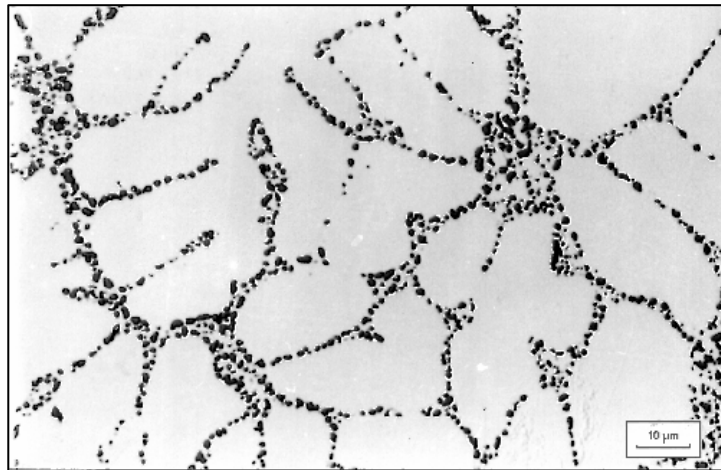


Figura 5.30. Zona intermedia lingote de Rheocasting 10 minutos a 550 °C.

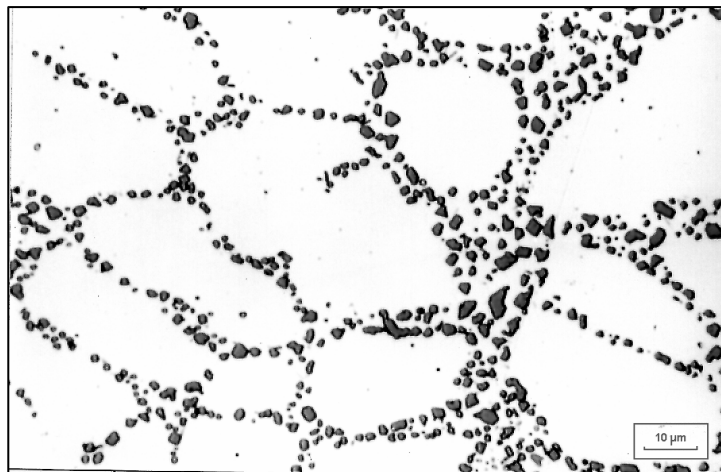


Figura 5.31. Zona intermedia lingote de Rheocasting 30 minutos a 550 °C.

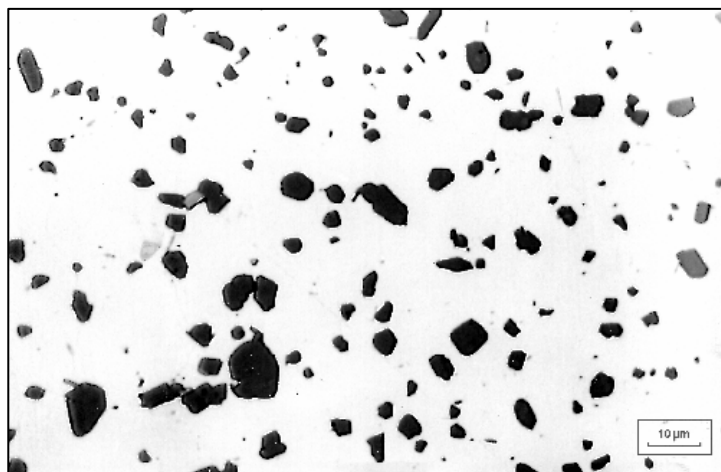


Figura 5.32. Zona intermedia lingote de Rheocasting 24 h a 550 °C.

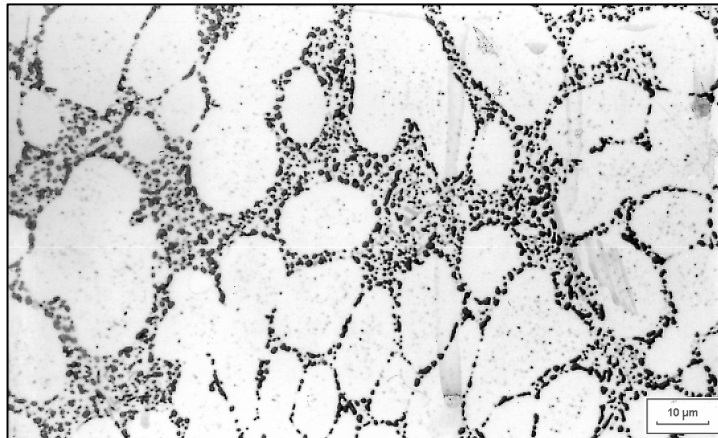


Figura 5.33. Periferia lingote de Rheocasting 30 minutos a 450 °C.

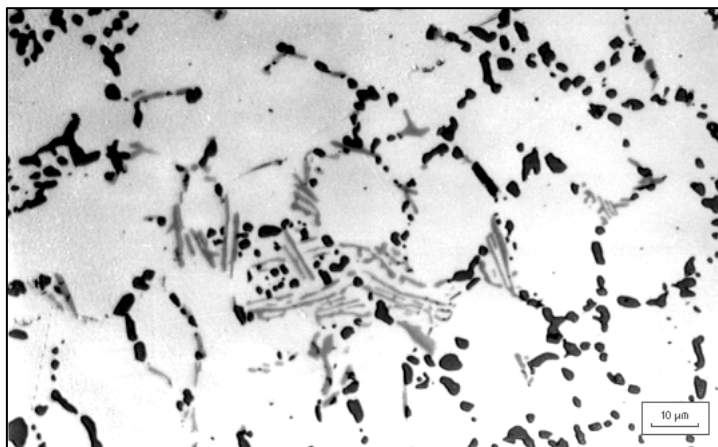


Figura 5.34. Periferia lingote de Rheocasting 6 h a 450 °C.

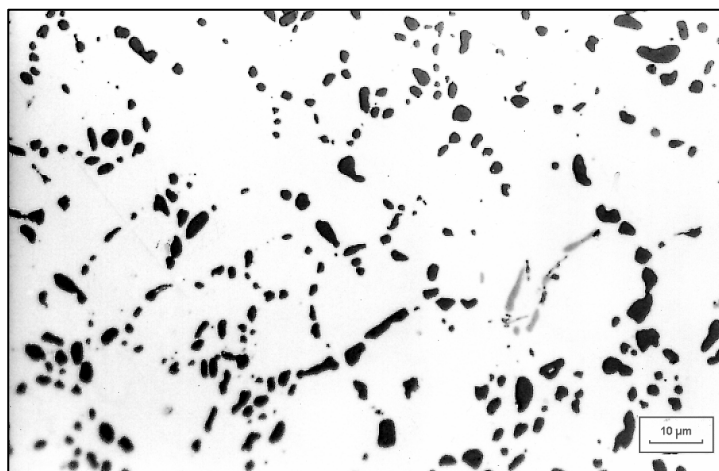


Figura 5.35. Periferia lingote de Rheocasting 24 h a 450 °C.